



RS Developers, LLC

Character Perspective: 4-Unit Assembly

Schaumburg Townhome Development
Schaumburg, IL



The drawings presented are illustrative of character and design intent only, and are subject to change based upon final design considerations (i.e. applicable codes, structural, and MEP design requirements, unit plan / floor plan changes, etc.) © 2024 BSB Design, Inc.

August 30, 2024



RS Developers, LLC

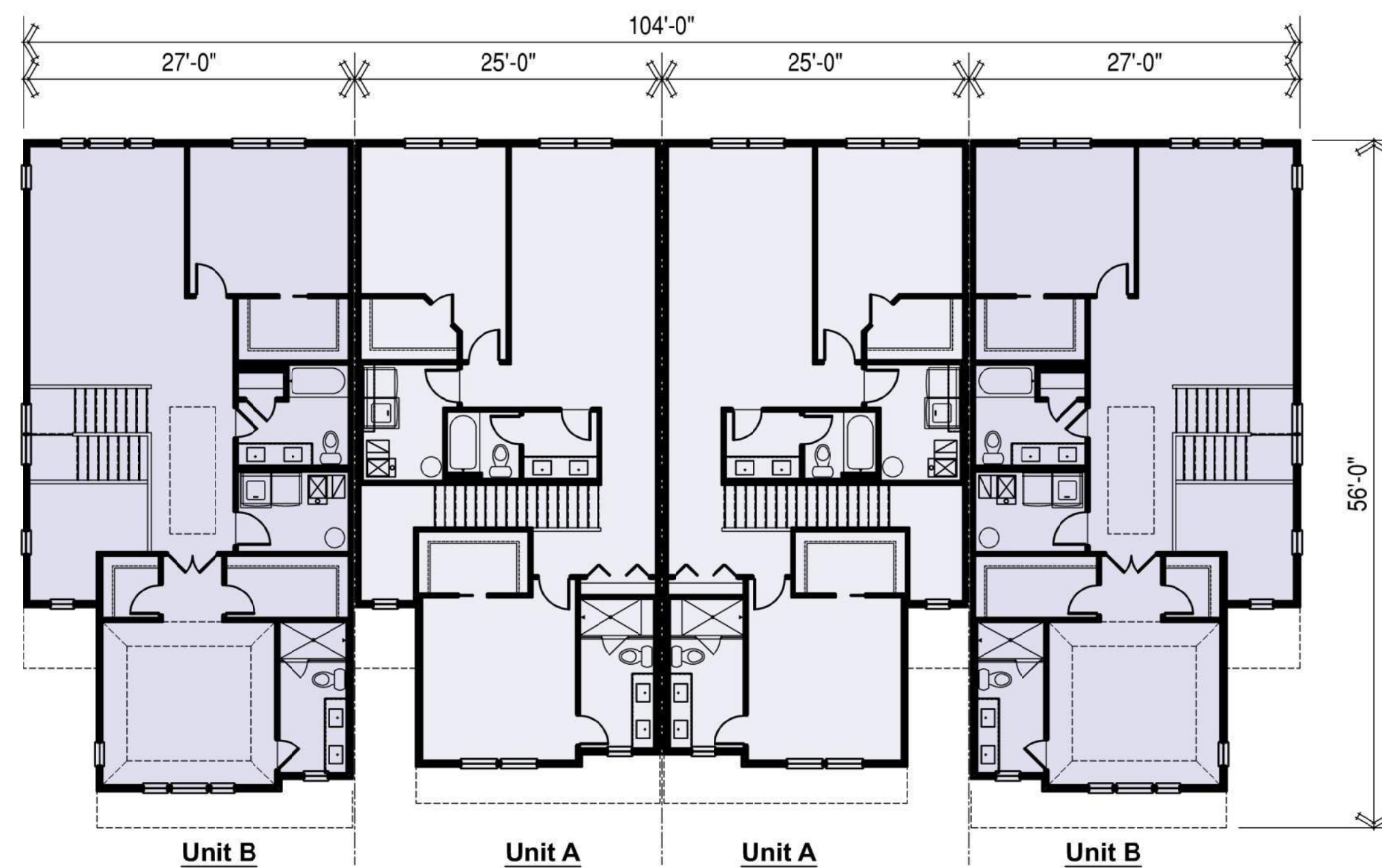
Character Perspective: 4-Unit Assembly

Schaumburg Townhome Development
Schaumburg, IL

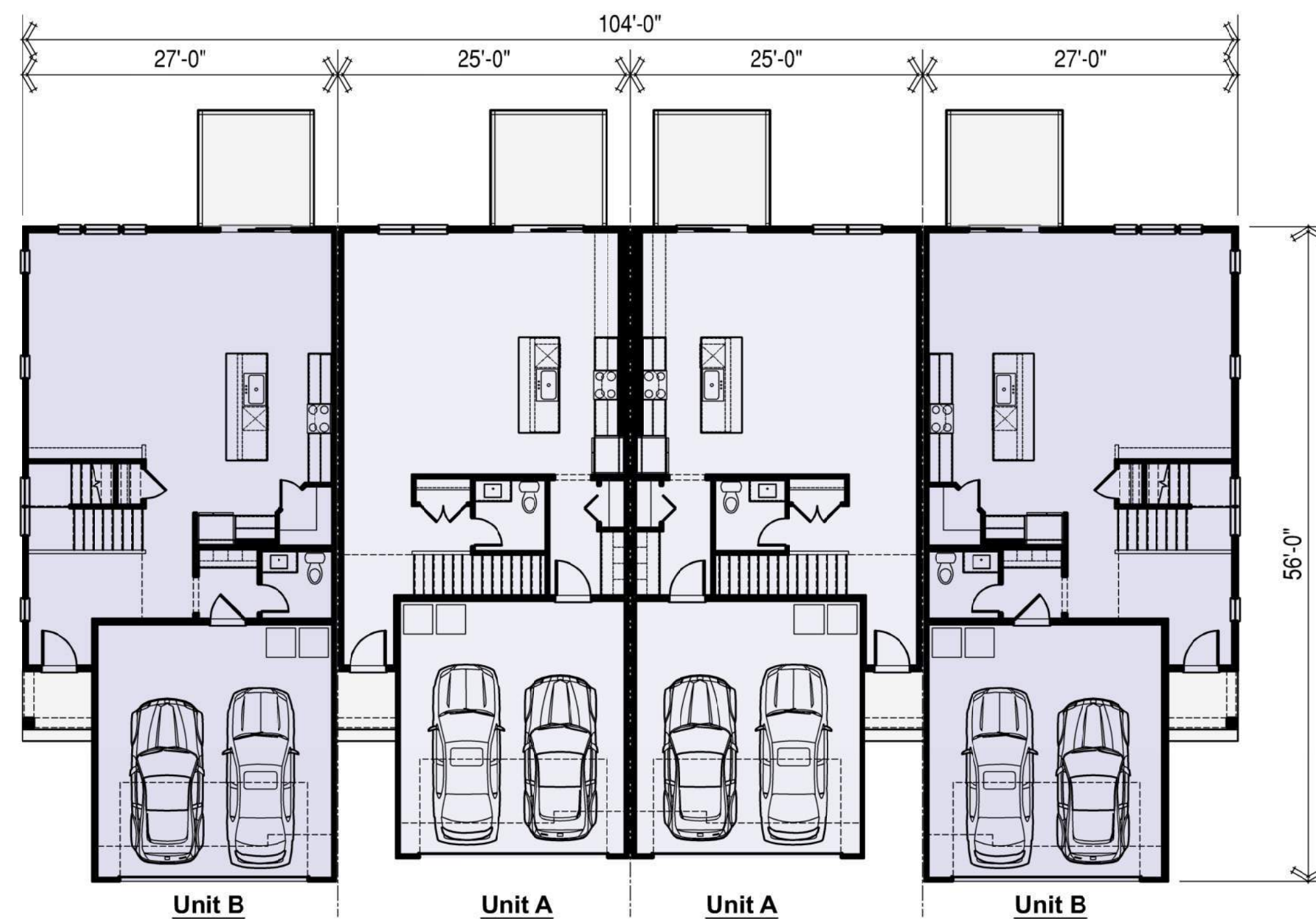


The drawings presented are illustrative of character and design intent only, and are subject to change based upon final design considerations (i.e. applicable codes, structural, and MEP design requirements, unit plan / floor plan changes, etc.) © 2024 BSB Design, Inc.

August 30, 2024



4-Unit Assembly
Upper Floor Plan
SCALE: 3/32"=1'-0"



4-Unit Assembly
Main Floor Plan
SCALE: 3/32"=1'-0"

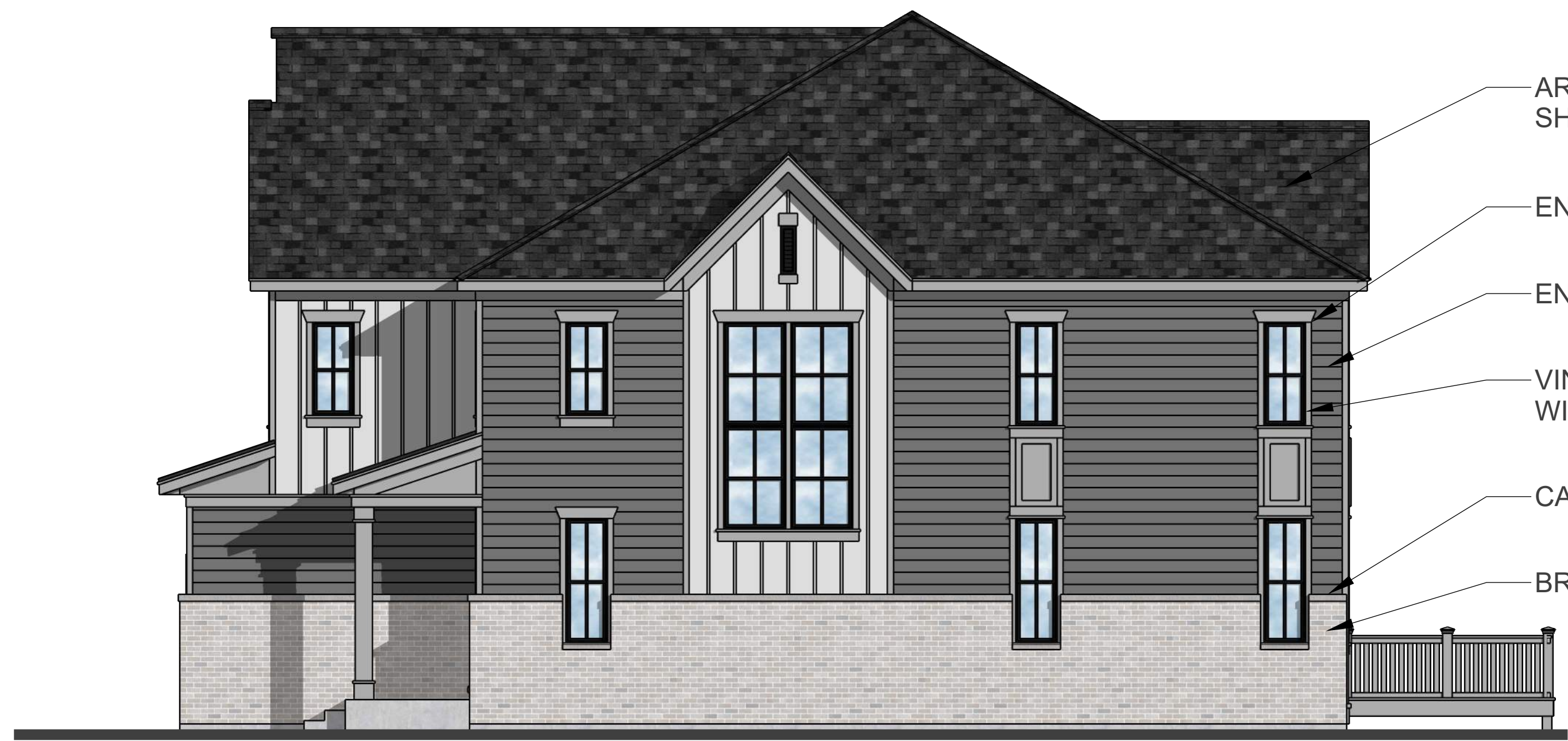


Front Elevation
 Scale: 3/16" = 1'-0"



Unit B

Left Elevation
Scale: 3/16" = 1'-0"



Unit B

Right Elevation
Scale: 3/16" = 1'-0"



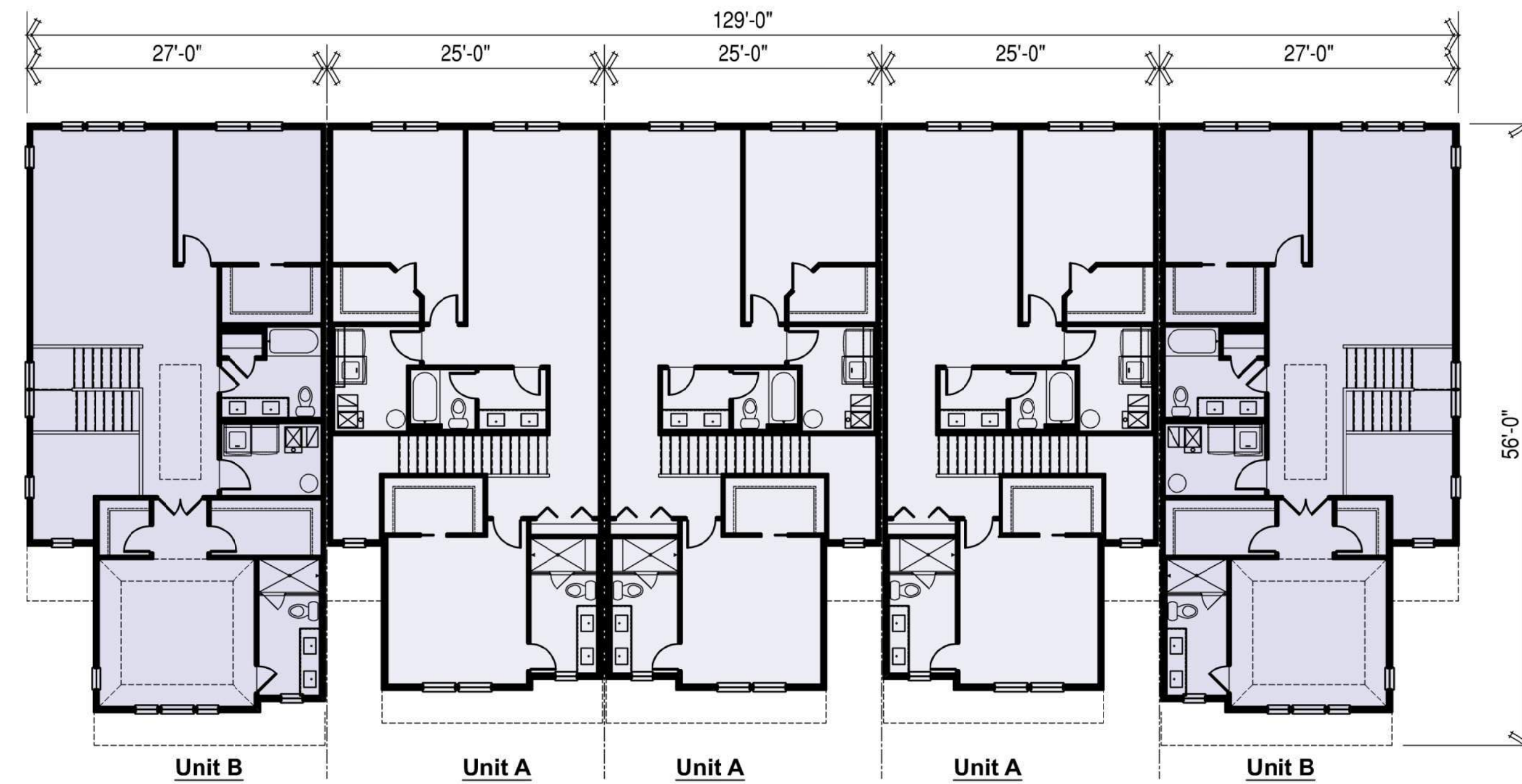
Unit B

Unit A

Unit A

Unit B

Rear Elevation
Scale: 3/16" = 1'-0"



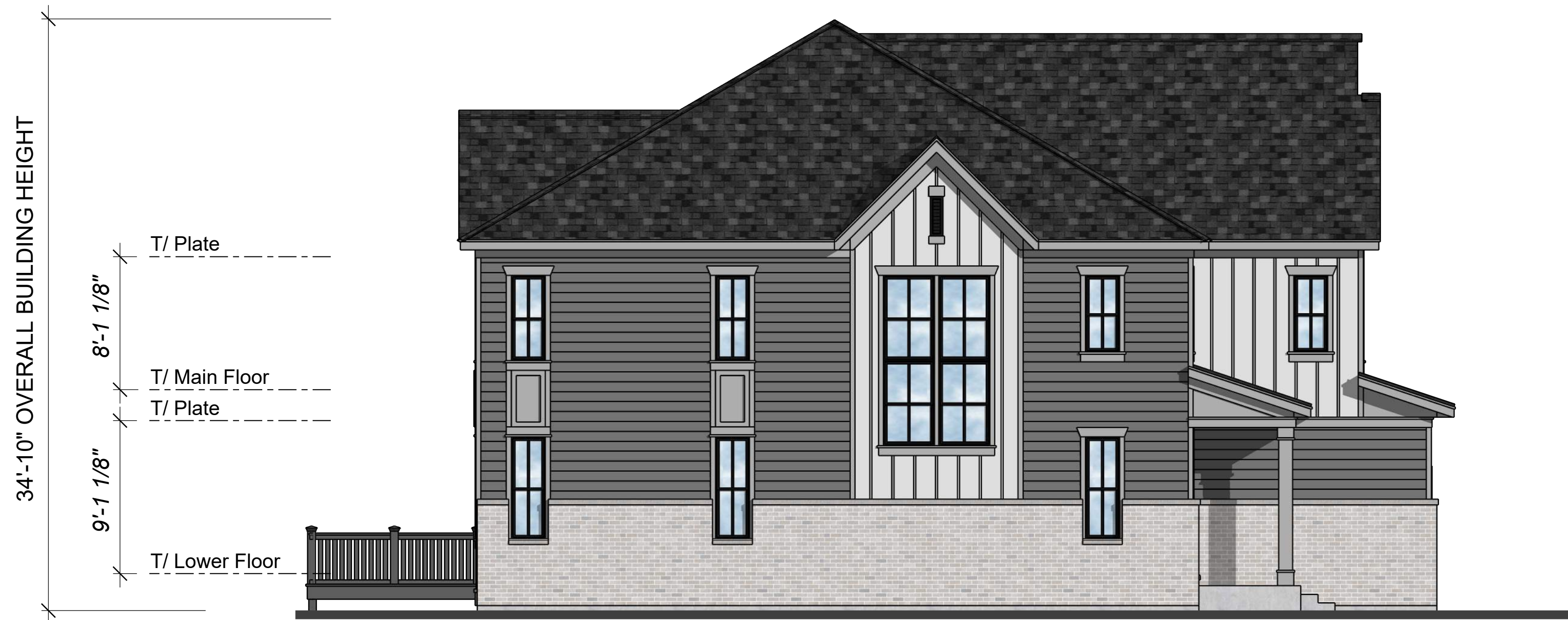
5-Unit Assembly
Upper Floor Plan
SCALE: 3/32"=1'-0"



5-Unit Assembly
Main Floor Plan
SCALE: 3/32"=1'-0"

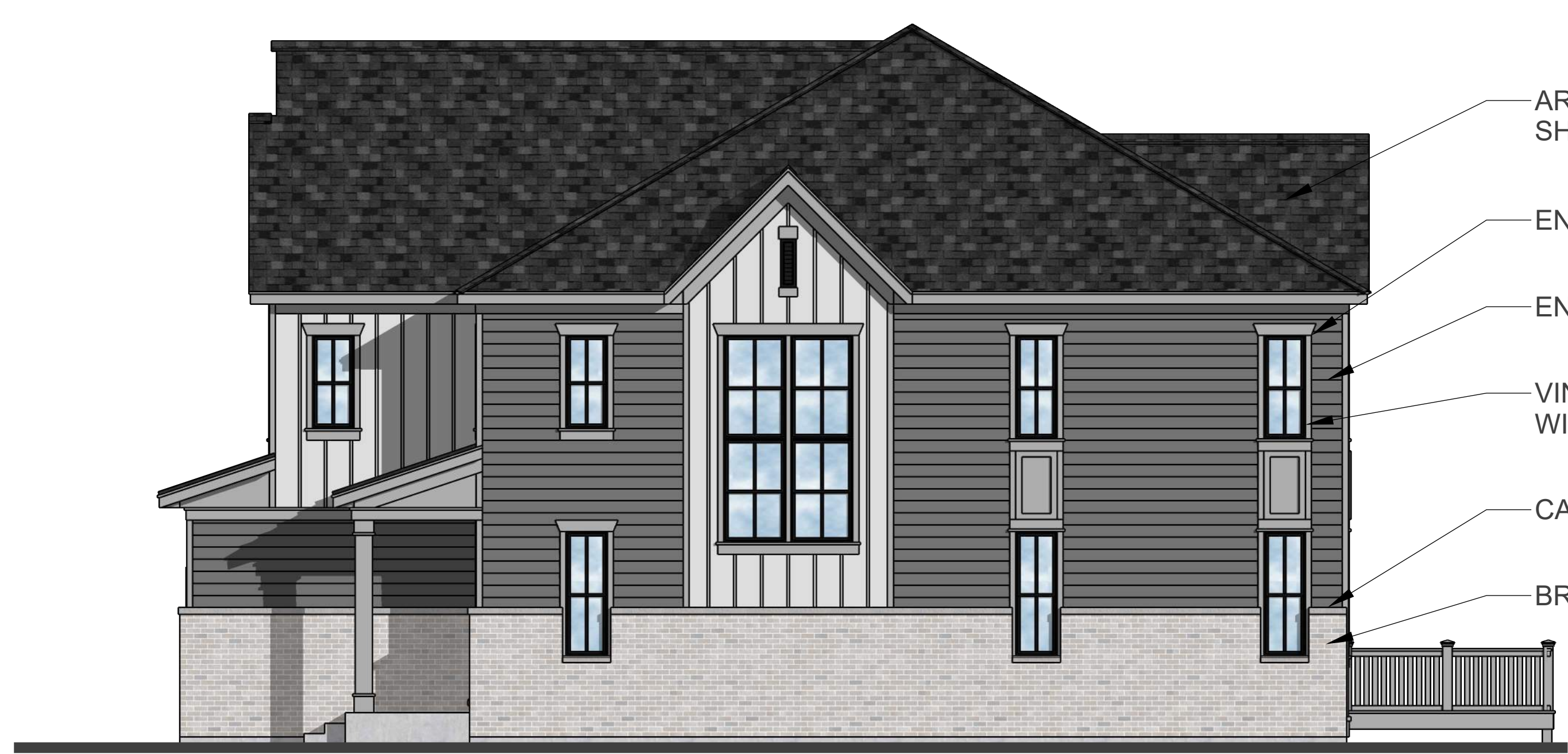


Front Elevation
 Scale: 3/16" = 1'-0"



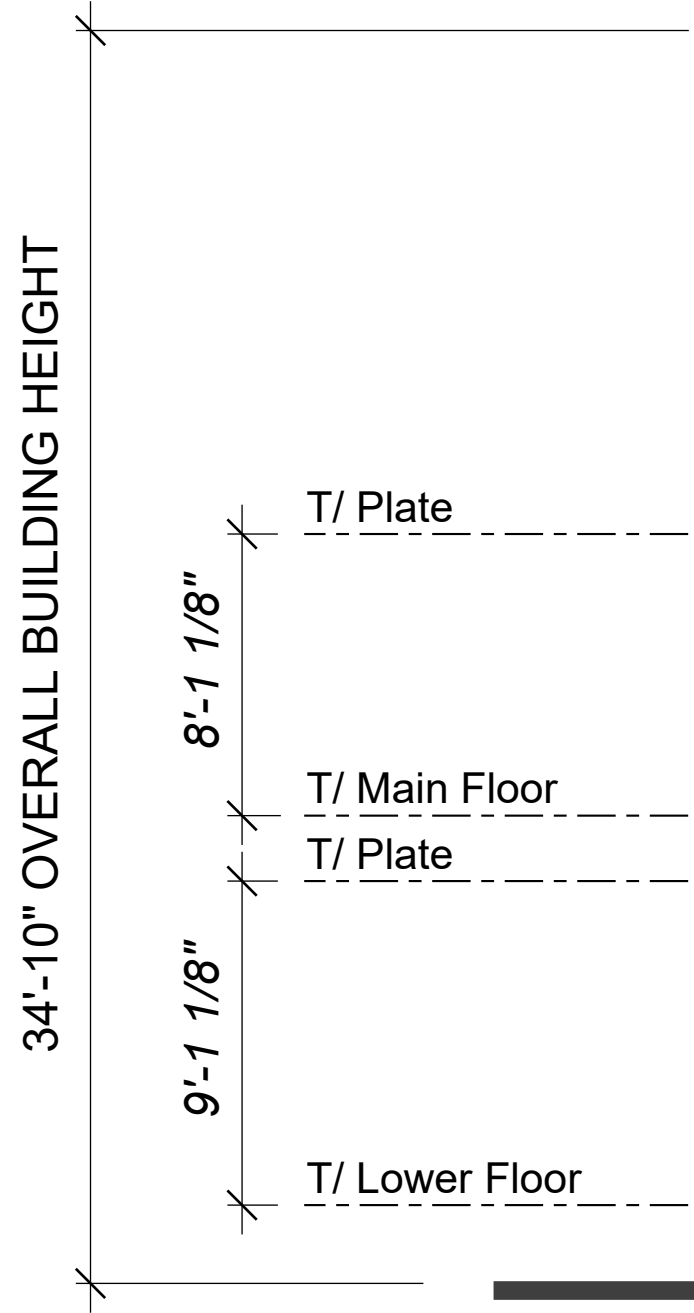
Unit B

Left Elevation
Scale: 3/16" = 1'-0"



Unit B

Right Elevation
Scale: 3/16" = 1'-0"



Unit B

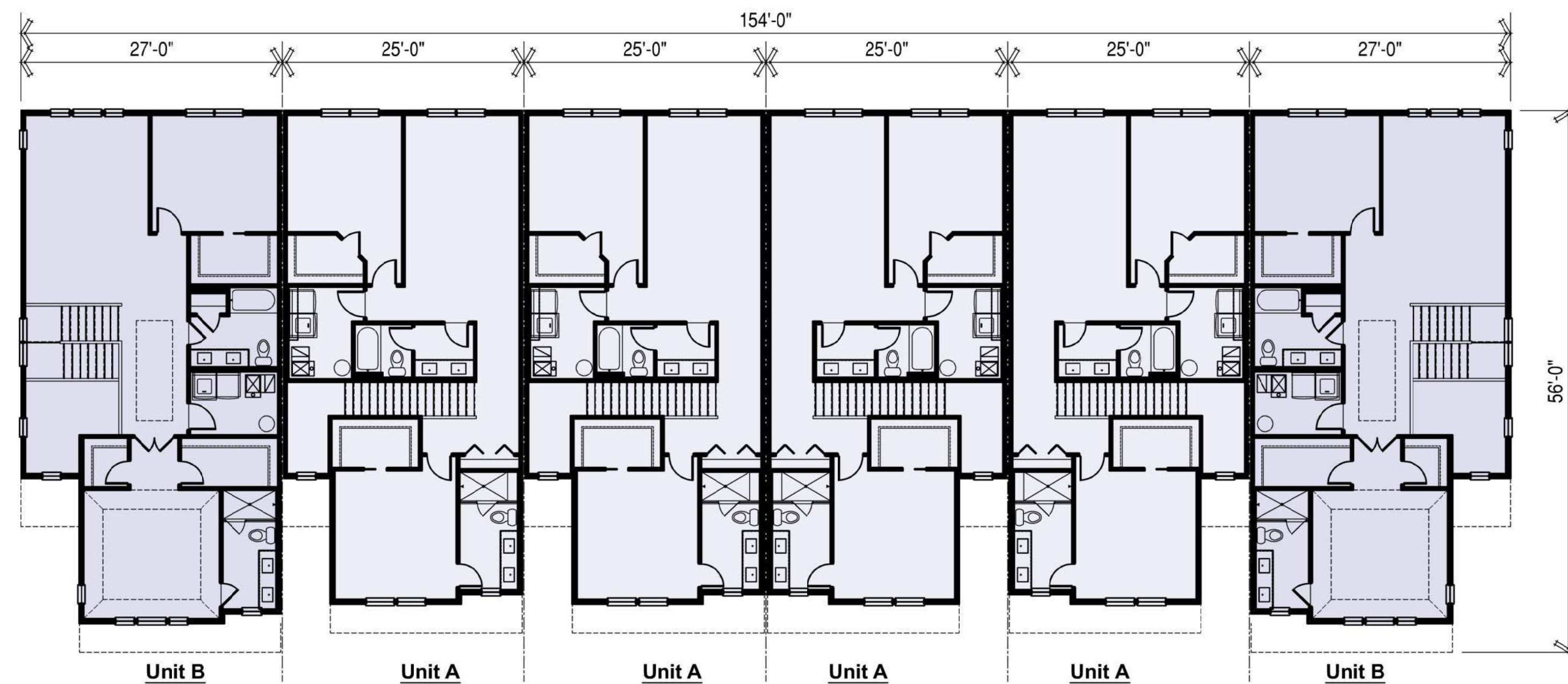
Unit A

Unit A

Unit A

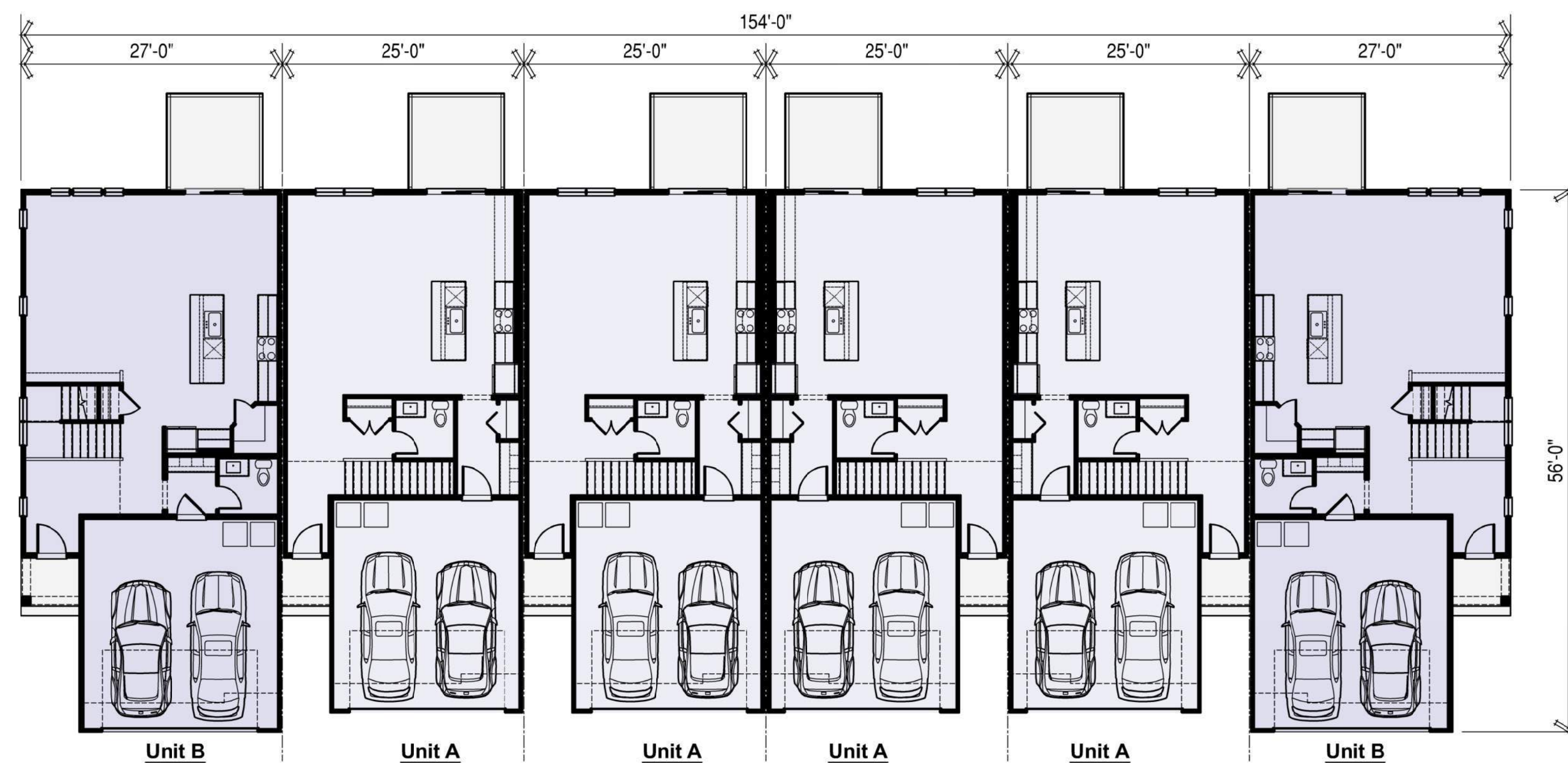
Unit B

Rear Elevation
Scale: 3/16" = 1'-0"



6-Unit Assembly
Upper Floor Plan

SCALE: 3/32"=1'-0"



6-Unit Assembly
Main Floor Plan

SCALE: 3/32"=1'-0"



Front Elevation
Scale: 3/16" = 1'-0"



Unit B

Left Elevation
Scale: 3/16" = 1'-0"



Unit B

Right Elevation
Scale: 3/16" = 1'-0"

- ARCHITECTURAL ASPHALT SHINGLES
- ENGINEERED WOOD TRIM
- ENGINEERED LAP SIDING
- VINYL SINGLE-HUNG WINDOWS
- CAST STONE SILL
- BRICK VENEER



Unit B

Unit A

Unit A

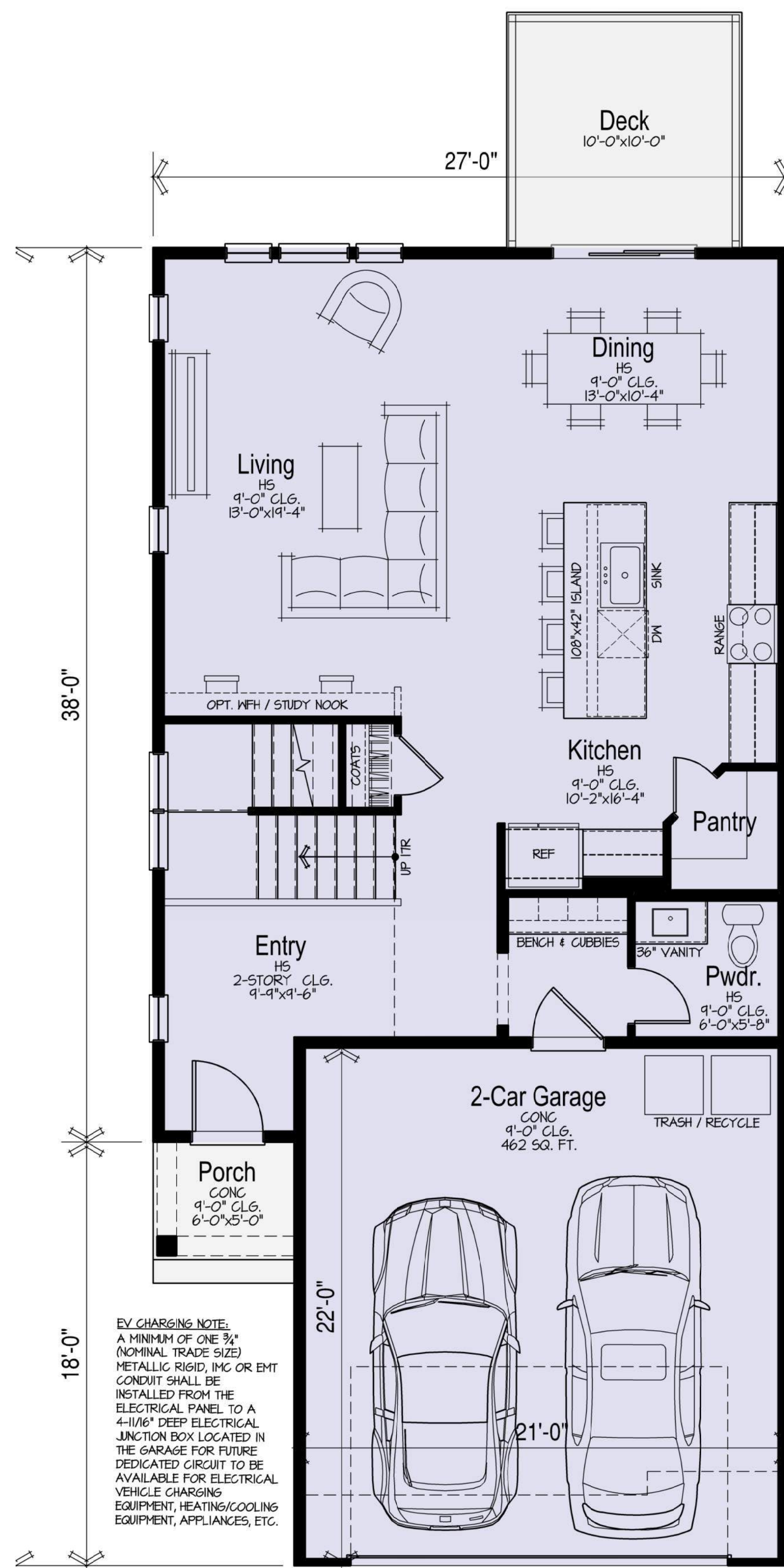
Unit A

Unit A

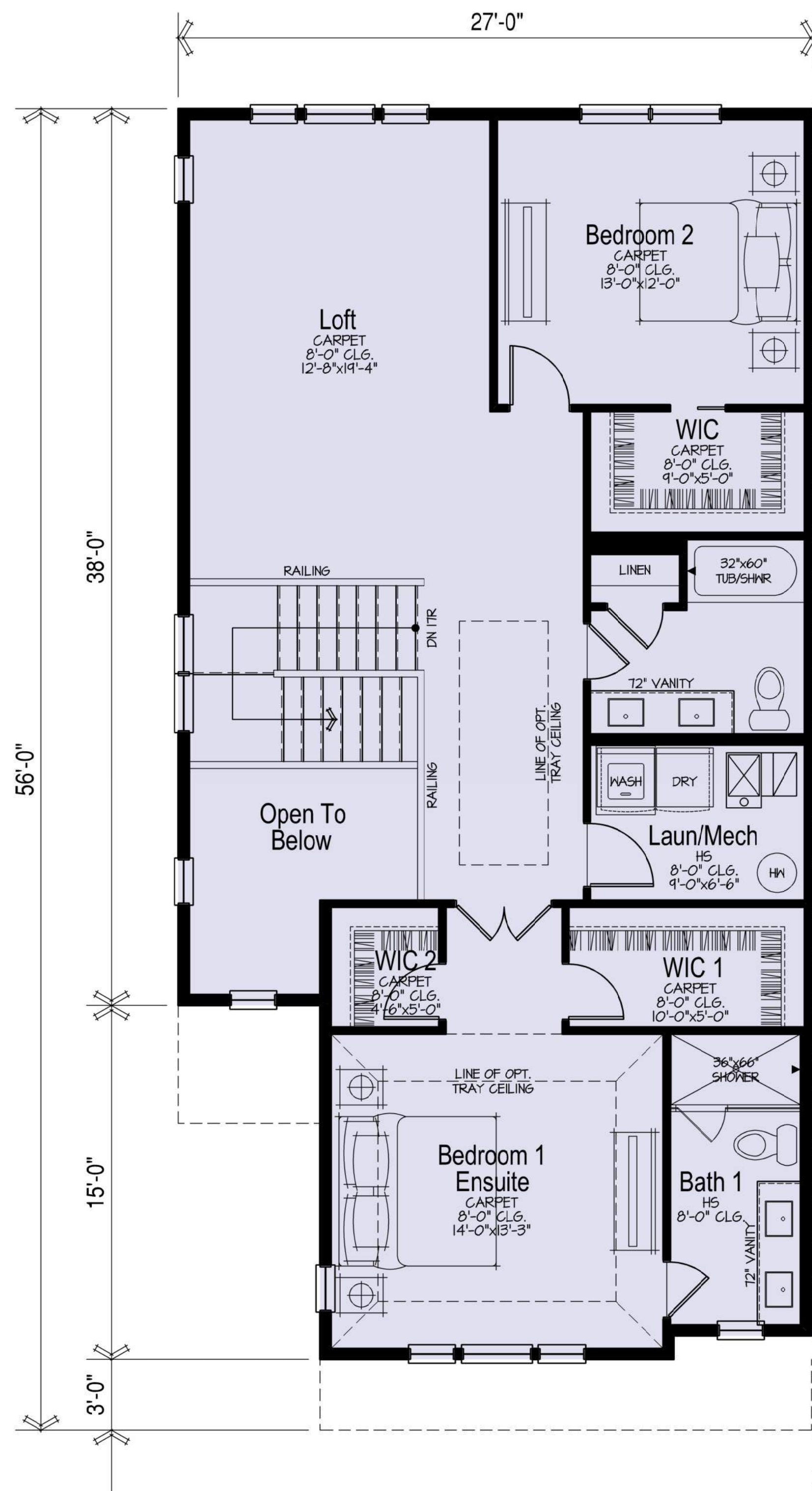
Unit B

Rear Elevation
Scale: 3/16" = 1'-0"

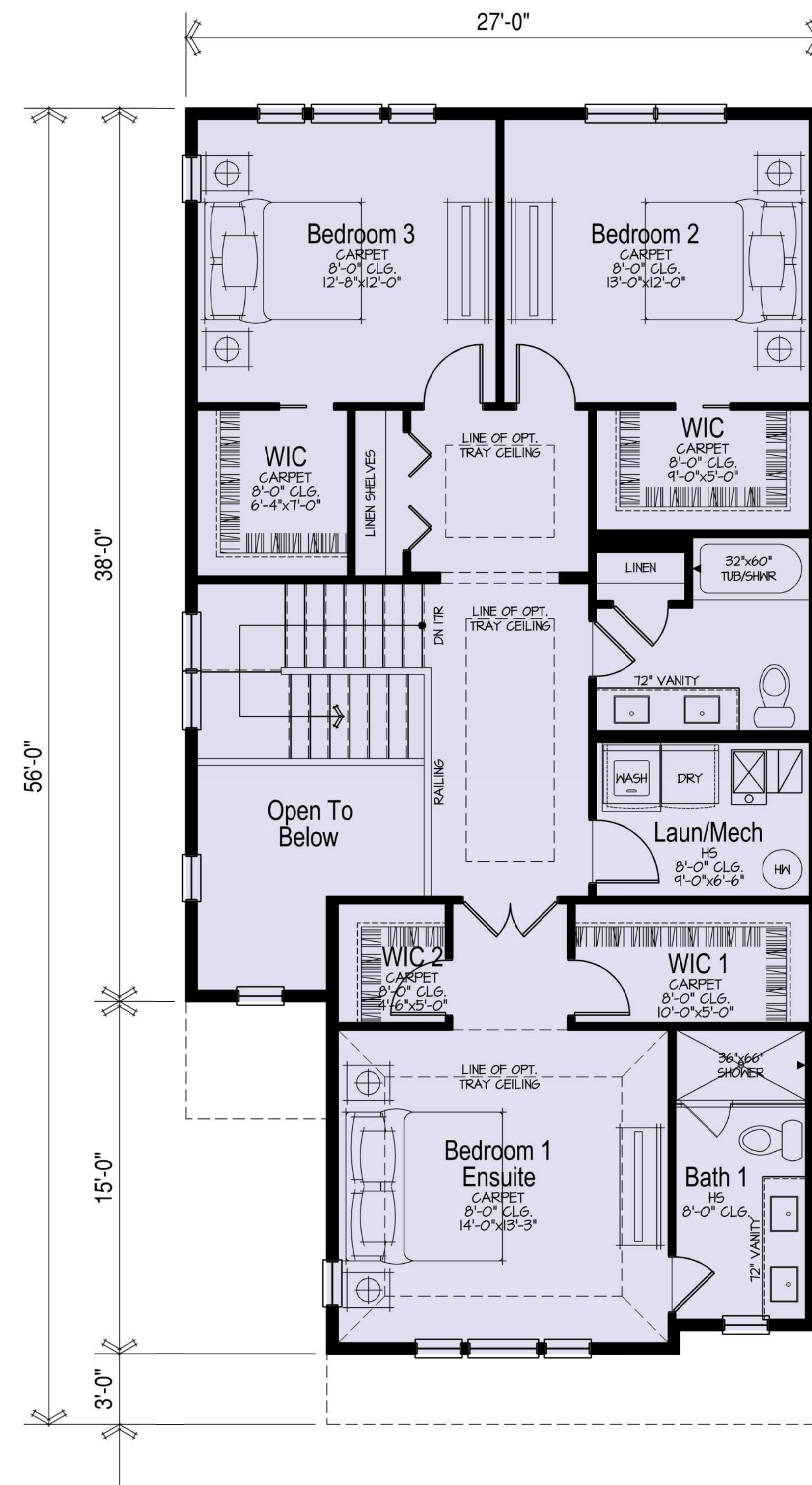
- DECORATIVE LOUVER
- ENGINEERED BOARD & BATTEN SIDING
- ARCHITECTURAL ASPHALT SHINGLES
- ENGINEERED WOOD TRIM
- ENGINEERED LAP SIDING
- ENGINEERED WOOD PANEL & TRIM
- VINYL SINGLE-HUNG WINDOWS
- ENGINEERED WOOD TRIM



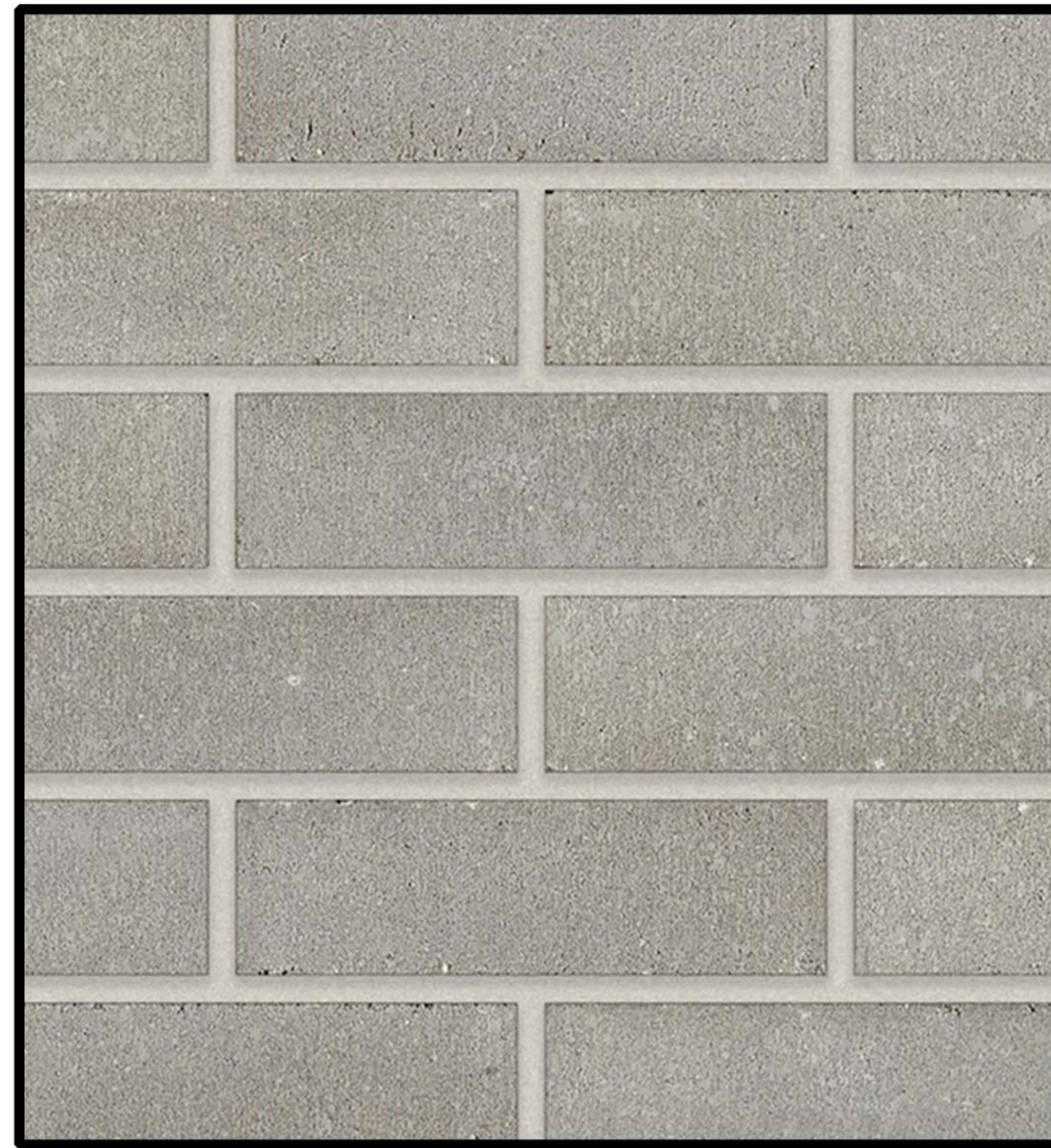
938 SF (462 SF Garage)
Garage Entry in Vestibule / Coats at Stairway
Main Floor Plan
SCALE: 1/4"=1'-0"



1173 SF
2 Bedroom + Loft
Upper Floor Plan
SCALE: 1/4"=1'-0"



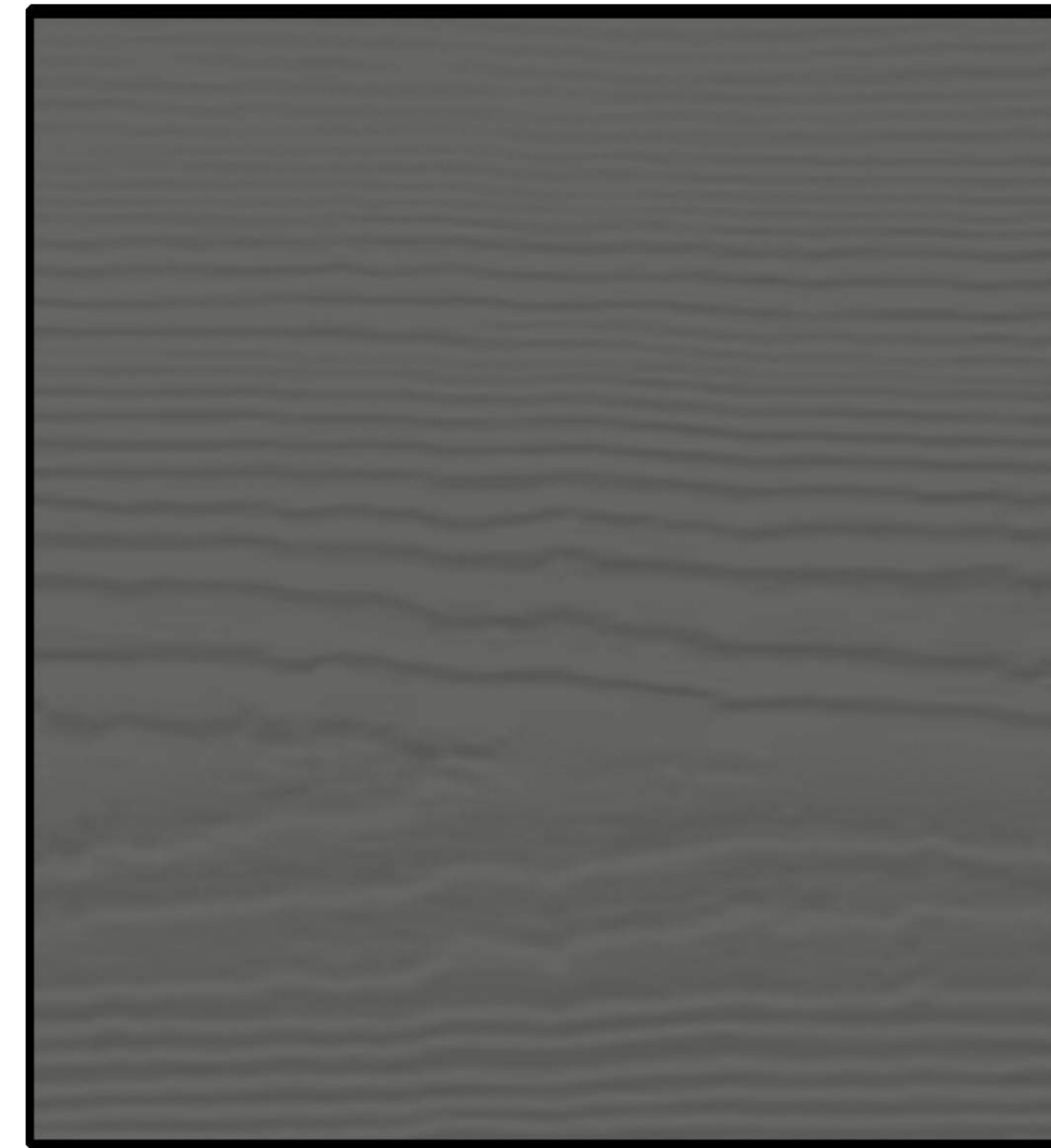
1173 SF
Optional Bedroom 3
Upper Floor Plan
SCALE: 1/4"=1'-0"



Brick Veneer
County Materials "Gray Stone"



Single-Hung Windows
Black Vinyl



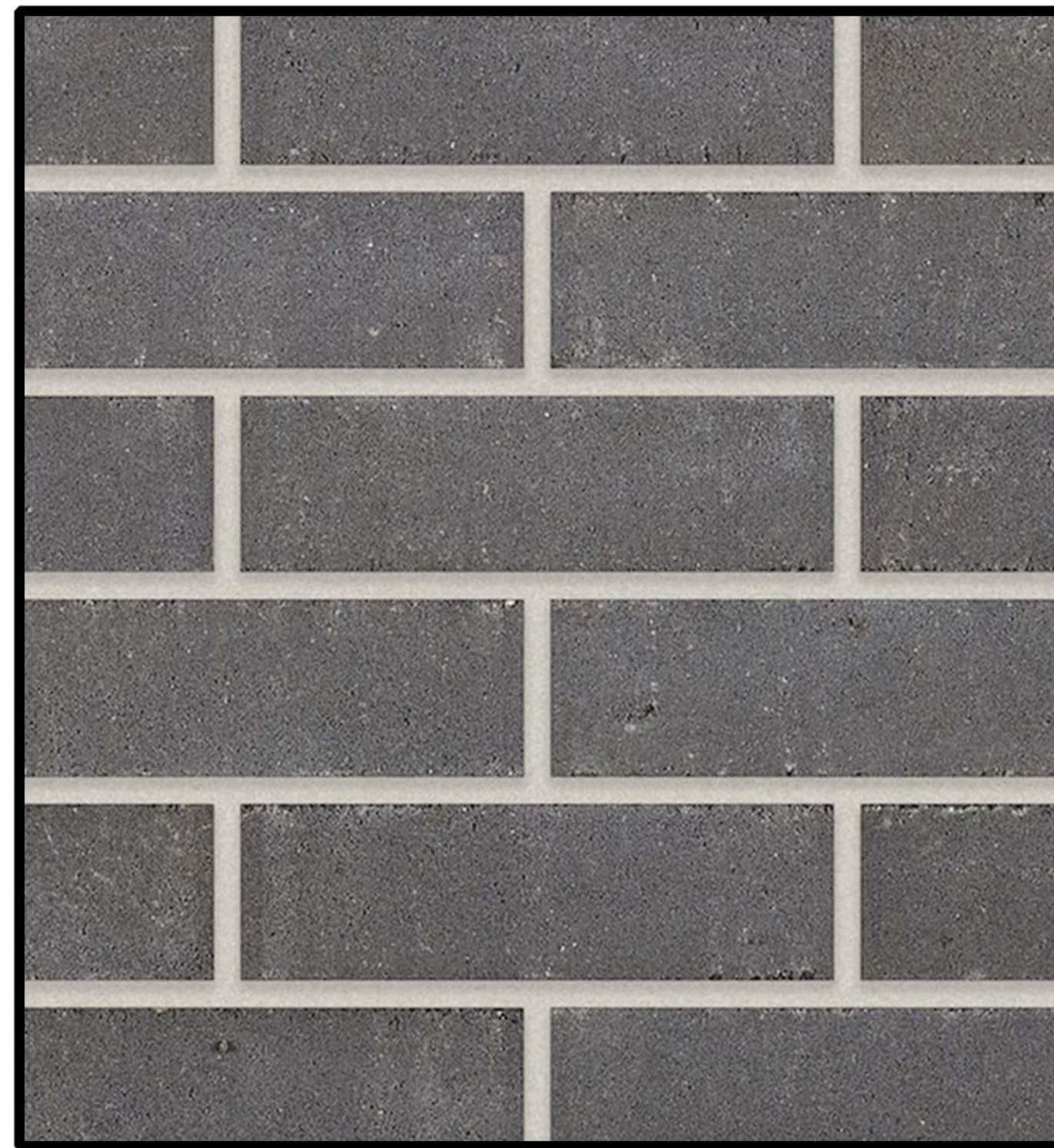
LP SmartSide Lap Siding or Equal
SW 7674 "Peppercorn"



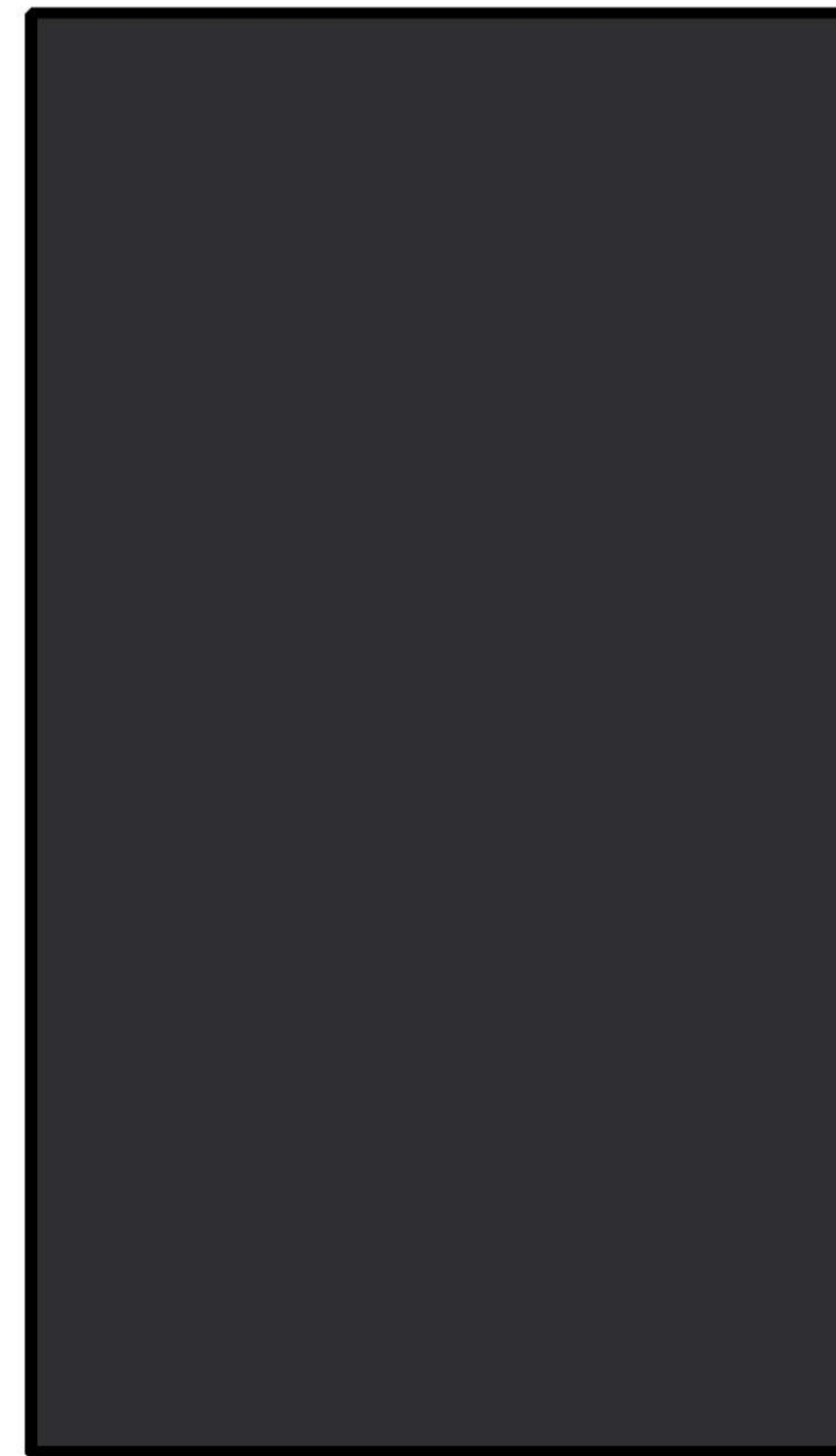
LP SmartSide Trim
SW7673 "Pewter Cast"



Architectural Asphalt Shingles
Owens Corning "Onyx Black"



Brick Veneer
County Materials "Slate"



Front Door & Accents
SW6258 "Tricorn Black"



LP SmartSide Board & Batten Siding or Equal
SW6002 "Essential Gray"



Standing Seam Metal Roof
Pac Clad "Flat Black"