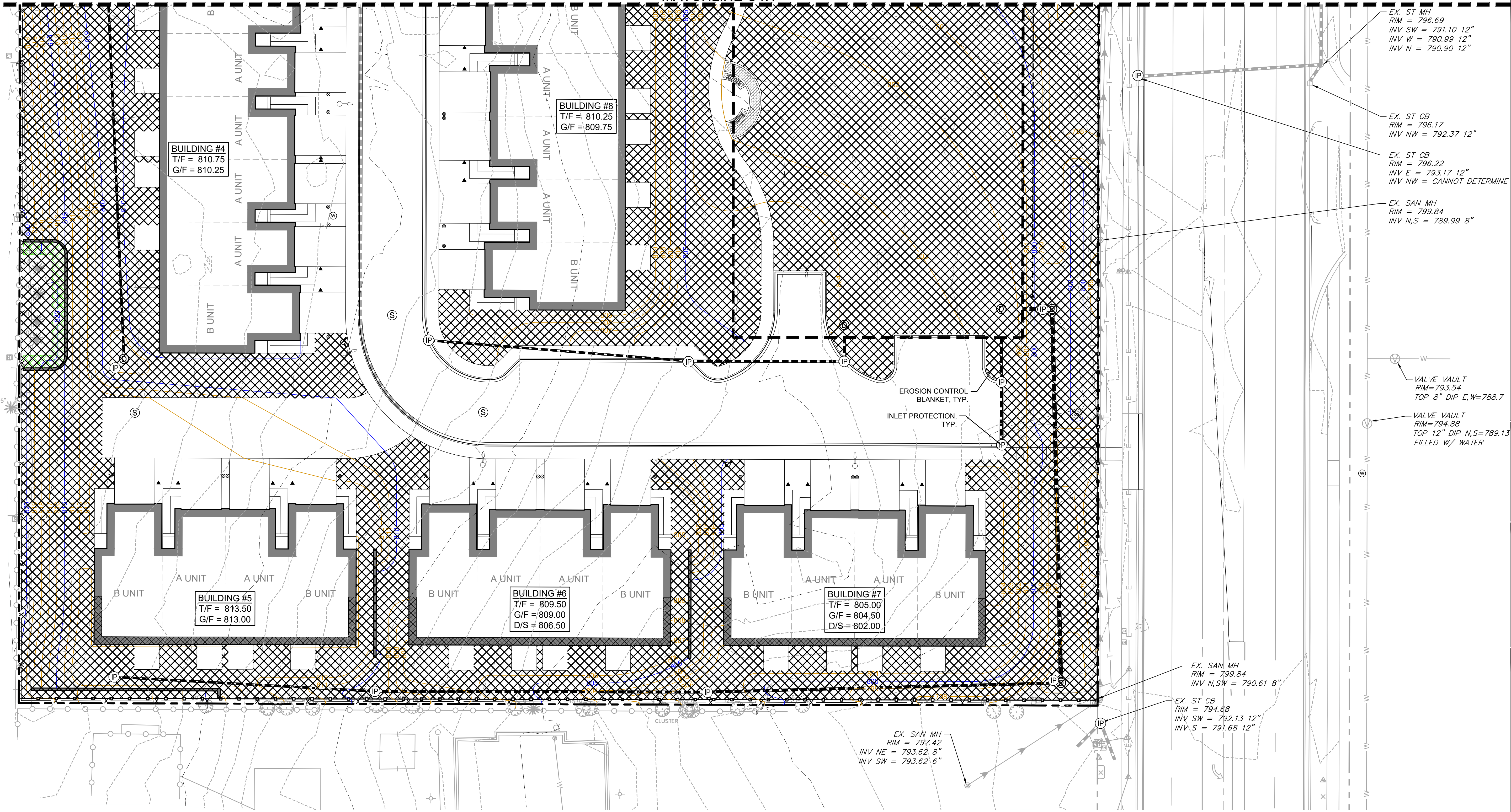
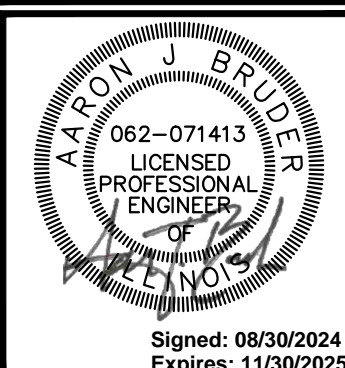


MATCHLINE C4.1



2200 CABOT DRIVE
 SUITE 325
 LISLE, IL 60532
 P. 630.598.0007
 WWW.CAGECIVIL.COM



REVISIONS

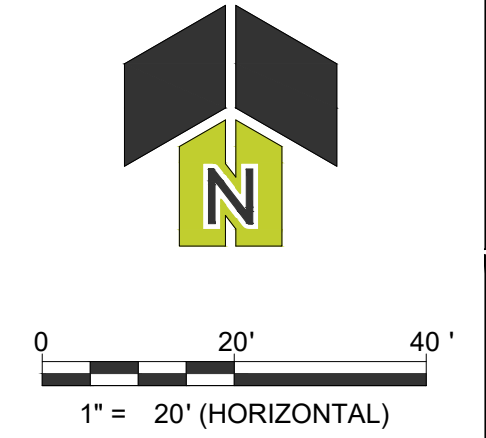
RS DEVELOPERS, LLC
SCHAUMBURG TOWNHOME DEVELOPMENT
 818-860 ROSELLE ROAD
 SCHAUMBURG, IL

PROJ NO: 240062
 ENG: AJB
 DATE: 08/30/2024

SHEET TITLE
SOIL EROSION & SEDIMENT CONTROL PLAN - SOUTH

SHEET NUMBER
C4.2
 16 OF 31

SESC LEGEND	
	SILT FENCE
	EROSION CONTROL BLANKET
	TEMPORARY CONSTRUCTION ENTRANCE
	INLET PROTECTION FILTER BASKET
	CONCRETE WASHOUT



**FLEXSTORM CATCH-IT FILTERS FOR TEMPORARY INLET PROTECTION
PRODUCT SELECTION AND SPECIFICATION DRAWING**

IDOT Standard	Manufacturer	Part Number	Inlet Type	Grate Size	Flow Rating (CFD)	Flow Rating (CFD)	ADS P/N
1	1713, 1762, 1772, 2504, 2535, 2455, 1050, 1050	1000, 1022	Round (RD)	22.25 - 23.5	1.9	1.3	6MRDLT1
2	R-3501-D2-A	7170, 7171	Round Curb (RC)	22.25 x 18.25	1.6	0.6	6ZMSQIL2216
3	R3278-A, R-3501-A	7228, 7221	Curb Box (CB)	22.0 x 16.9	1.5	1.0	6ZMSQILT3
4	R3443-B	5150	SquareRect (SQ)	21.75 X 14.75	1.5	1.0	6ZMSQIL
6	R3505-A	7235	Round Curb (RC)	22 x 22.75	2.3	1.2	6ZMSQILT6
8	2501, 4349-C, 4352, 4350	2835, 2870, 6527	Round (RD)	22 x 22.75	2.3	1.6	6ZMRDILT8
9	R3506-A2	7300	V-Grate	19.25 x 19.25	1.7	1.0	6ZMSQIL
10	R3506-A2	7281	V-Grate	28.75 x 11.4	1.5	1.1	6ZMSQIL
11	R3281-A	7210	Curb Box (CB)	28.75 x 17.25	2.5	1.3	6ZMSQILT11
12	R3503-B	7180	Round Curb (RC)	22.5 x 22.5	2.4	1.2	6ZMSQIL
20	R3528-V, R3529-V	7535, 5380, 7336 (2 grs)	SquareRect (SQ)	22.5 x 22.5	2.4	1.2	6ZMSQILT20
21	R3527-V	7240	Curb Box (CB)	24 x 16.25	1.8	1.1	6ZMSQIL
23	R3525-L	7494	SquareRect (SQ)	24 x 22.25	2.7	1.3	6ZMSQILT23
24	R3526-L	7487	SquareRect (SQ)	25.75 x 18.75	2.3	1.2	6ZMSQILT24
31	Round Curb (RC)	22.75 x 22.4	2.5	1.2	6ZMSQIL
B	R3455C	...	SquareRect (SQ)	36 x 24	4.6	1.7	6ZMSQIL
G33G4	R3501-U	7545	Single W/Flap	13.75 x 20.25 x 2.5	1.3	0.9	6ZMSQILT3
N/A	R-3501-P	7525	Round Curb (RC)	25.7 x 19	2.4	1.2	6ZMSQIL3501-P
N/A	R-3501-TR	7495	Round Curb (RC)	26 x 23.5	3.1	1.4	6ZMSQIL3501-TR

INSTALLATION:

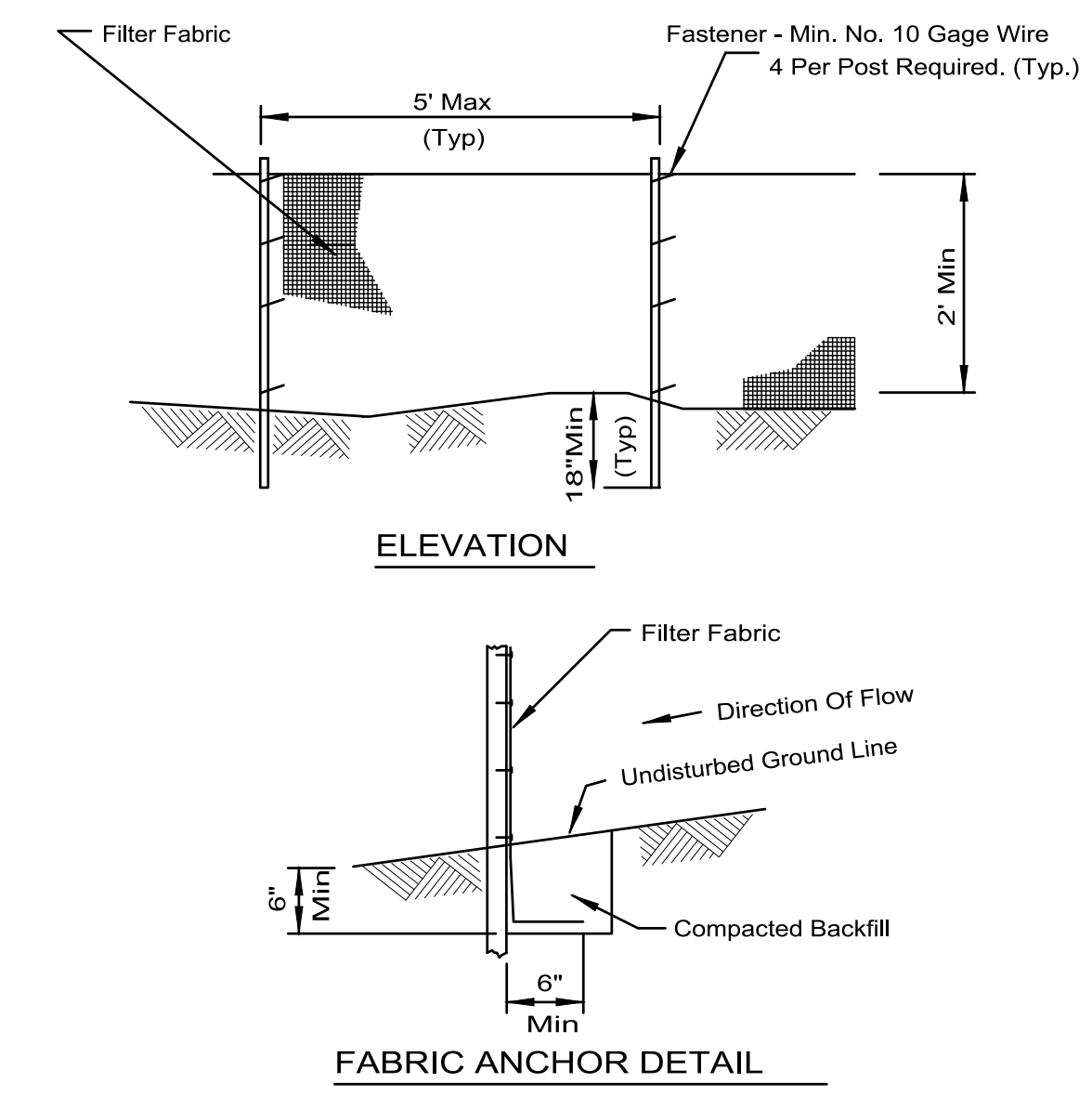
- REMOVE GRATE
- DRIP FLEXSTORM INLET FILTER ONTO LOAD BEARING LP OF CASTING OR CONCRETE STRUCTURE. CONCRETE STRUCTURES MAY REQUIRE ADDITIONAL REVIEW.
- REPLACE GRATE

NOTES:

- ALL FRAMING IS CONSTRUCTED OF CORROSION RESISTANT STEEL FRAMING FOR PROLONGED PRODUCT LIFE.
- TOTAL BYPASS CAPACITY WILL VARY WITH EACH SIZED DRAINAGE STRUCTURE. FLEXSTORM DESIGNS FRAMING BYPASS TO MEET OR EXCEED THE DESIGN FLOW OF THE PARTICULAR DRAINAGE STRUCTURE. CONCRETE STRUCTURES MAY REQUIRE ADDITIONAL REVIEW.
- UPON ORDERING THE ADS PIN CONFIRMATION OF THE DOT CALLOUT, FLEXSTORM ITEM CODE, CASTING MAKE AND MODEL, OR DETAILED DIMENSIONAL FORMS MUST BE PROVIDED.
- FOR WRITTEN SPECIFICATIONS AND MAINTENANCE GUIDELINES VISIT WWW.INLETFILTERS.COM

ALL PRODUCTS MANUFACTURED BY INLET & PIPE PROTECTION, INC. A DIVISION OF ADS, INC. WWW.INLETFILTERS.COM (866) 287-6655 PH (830) 355-3477 FX INFO@INLETFILTERS.COM

SILT FENCE PLAN

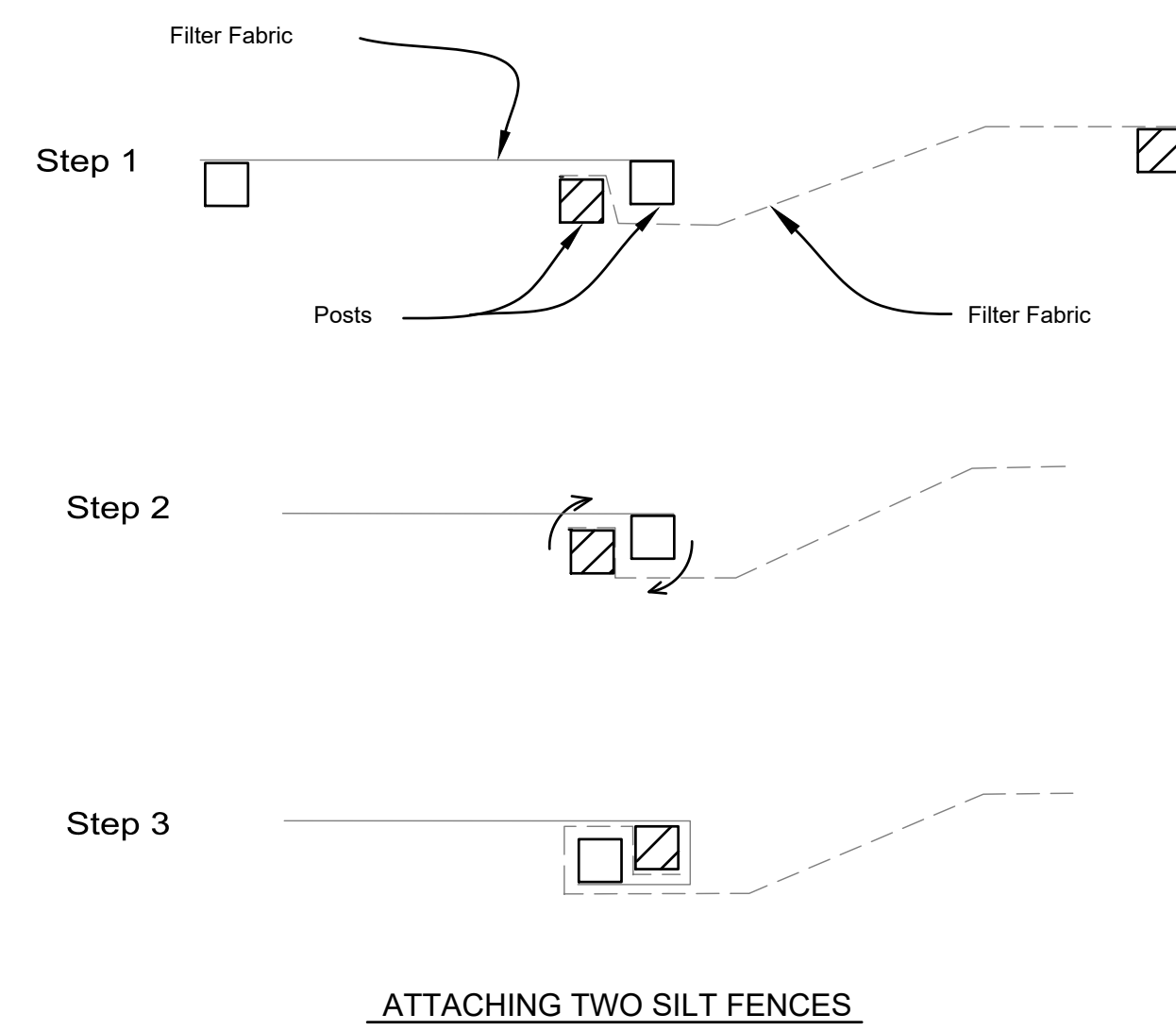


- NOTES:**
- Temporary sediment fence shall be installed prior to any grading work in the area to be protected. They shall be maintained throughout the construction period and removed in conjunction with the final grading and site stabilization.
 - Filter fabric shall meet the requirements of material specification 592 Geotextile Table 1 or 2, Class with equivalent opening size of at least 30 for nonwoven and 40 for woven.
 - Fence posts shall be either standard steel post or wood post with a minimum cross-sectional area of 3.0 sq. in.

REFERENCE Project _____ Date _____
 Designed _____ Date _____
 Checked _____ Date _____
 Approved _____ Date _____

STANDARD DWG. NO. IUM-620 SHEET 1 OF 2 DATE 3-16-12

SILT FENCE - SPLICING TWO FENCES

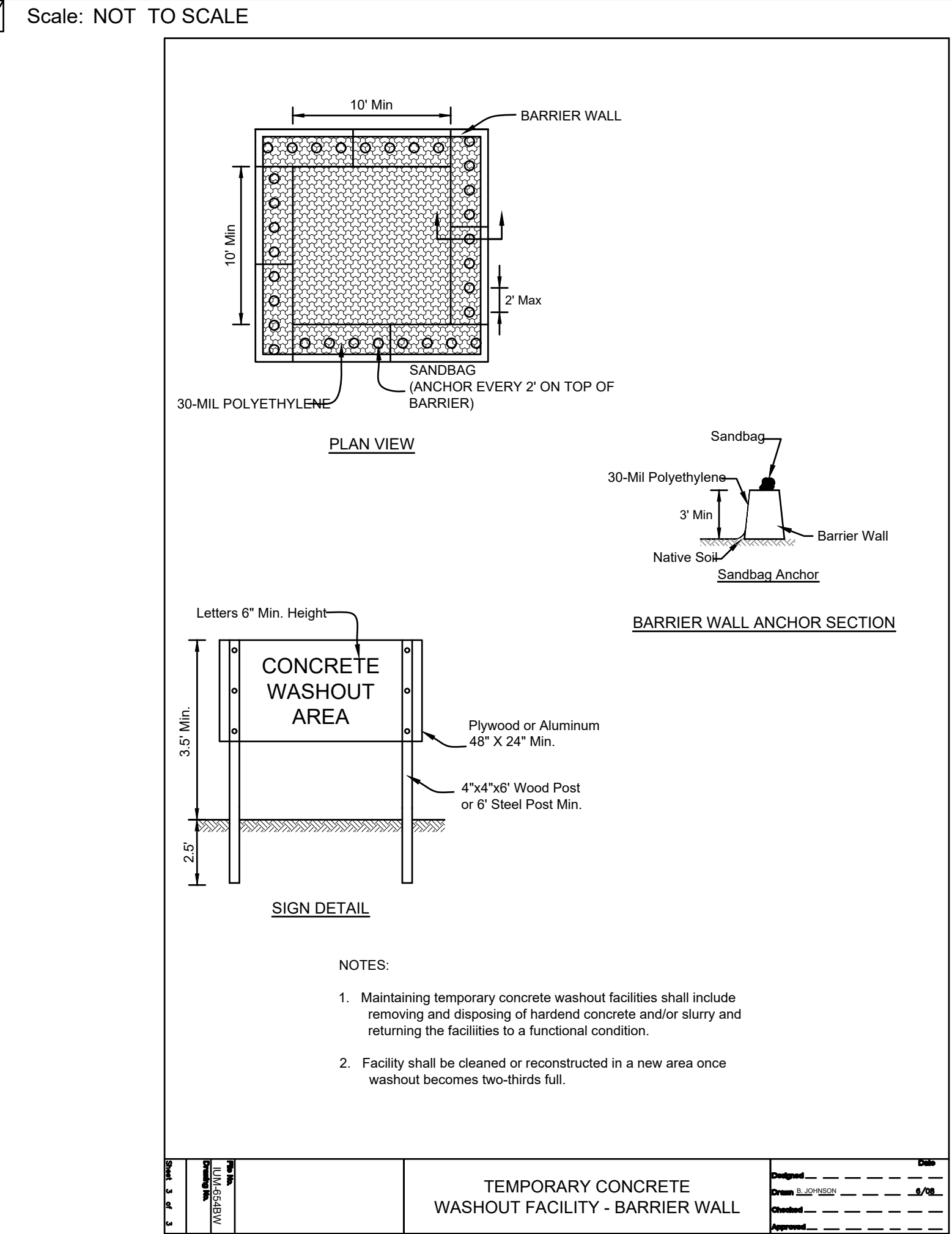


- ATTACHING TWO SILT FENCES**
- Place the end post of the second fence inside the end post of the first fence.
 - Rotate both posts at least 180 degrees in a clockwise direction to create a tight seal with the fabric material.
 - Cut the fabric near the bottom of the stakes to accommodate the 6" flap.
 - Drive both posts a minimum of 18 inches into the ground and bury the flap.
 - Compact backfill (particularly at splices) completely to prevent stormwater piping.

REFERENCE Project _____ Date _____
 Designed _____ Date _____
 Checked _____ Date _____
 Approved _____ Date _____

STANDARD DWG. NO. IUM-620B(W) SHEET 1 OF 1 DATE 3-16-2012

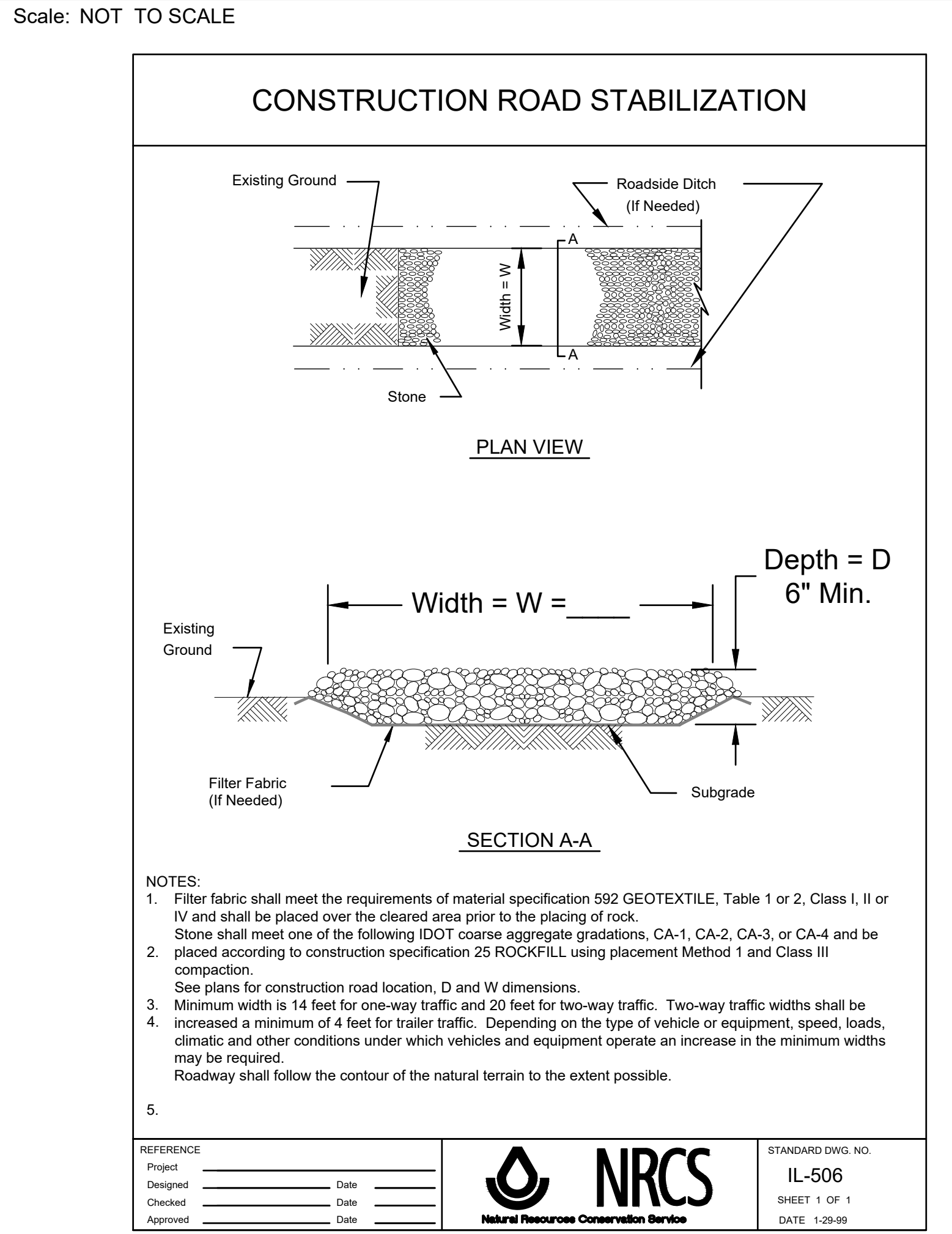
INLET PROTECTION DETAIL



TEMPORARY CONCRETE WASHOUT FACILITY - BARRIER WALL

REFERENCE Project _____ Date _____
 Designed _____ Date _____
 Checked _____ Date _____
 Approved _____ Date _____

SILT FENCE DETAIL

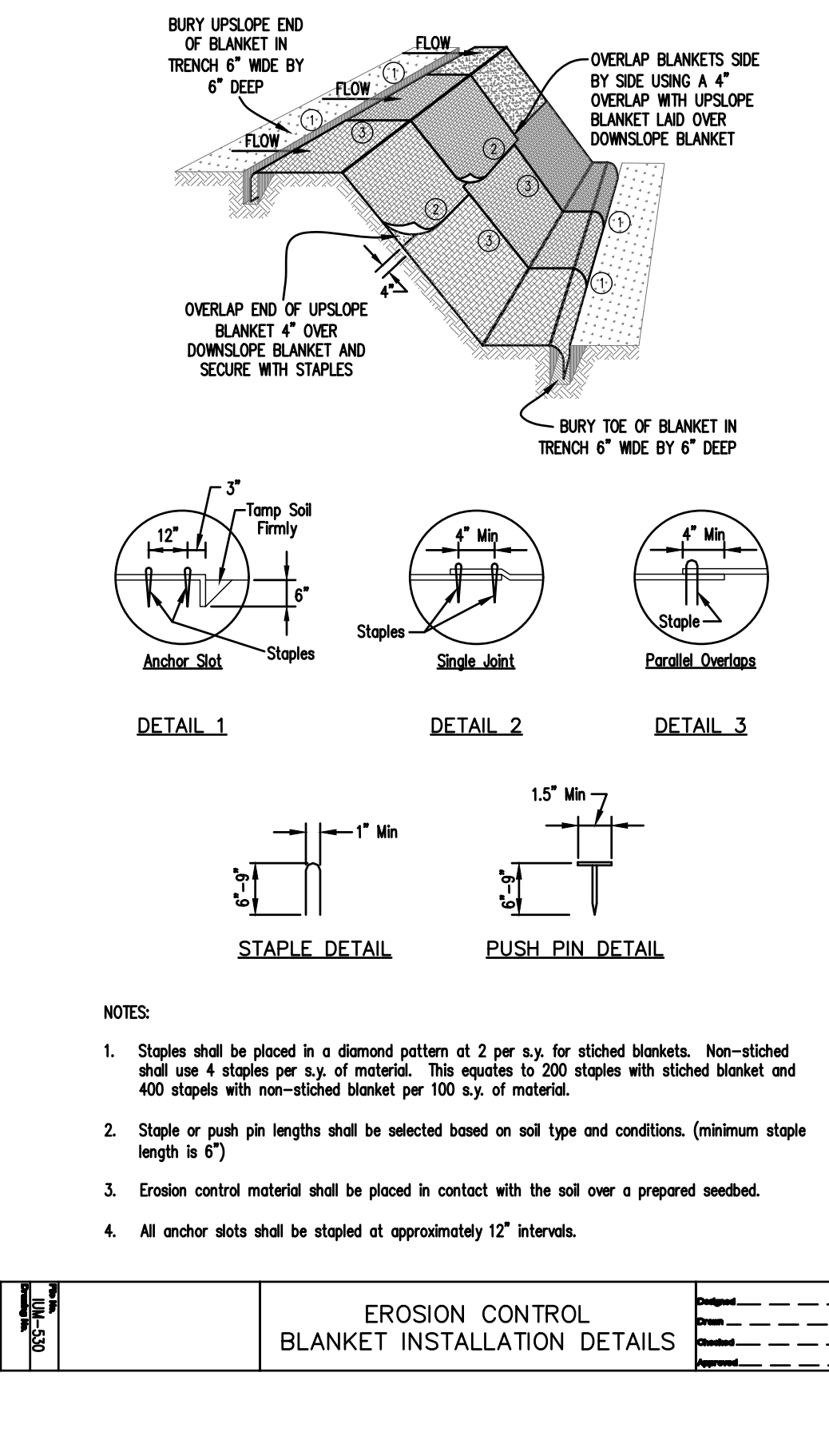


TEMPORARY CONSTRUCTION ENTRANCE DETAIL

REFERENCE Project _____ Date _____
 Designed _____ Date _____
 Checked _____ Date _____
 Approved _____ Date _____

STANDARD DWG. NO. IL-506 SHEET 1 OF 1 DATE 1-28-09

CONSTRUCTION ROAD STABILIZATION



EROSION CONTROL BLANKET INSTALLATION DETAILS

REFERENCE Project _____ Date _____
 Designed _____ Date _____
 Checked _____ Date _____
 Approved _____ Date _____

CONCRETE WASHOUT DETAIL

Scale: NOT TO SCALE

TEMPORARY CONSTRUCTION ENTRANCE DETAIL

Scale: NOT TO SCALE

EROSION CONTROL BLANKET DETAIL

Scale: NOT TO SCALE

2200 CABOT DRIVE
 SUITE 325
 LISLE, IL 60532
 P. 630.598.0007
 WWW.CAGECIVIL.COM

CAGE
 CIVIL ENGINEERING

AARON J. BRIDER
 LICENSED PROFESSIONAL ENGINEER
 No. 062-071413
 State of Illinois
 Signed: 08/30/2024
 Expires: 11/30/2025

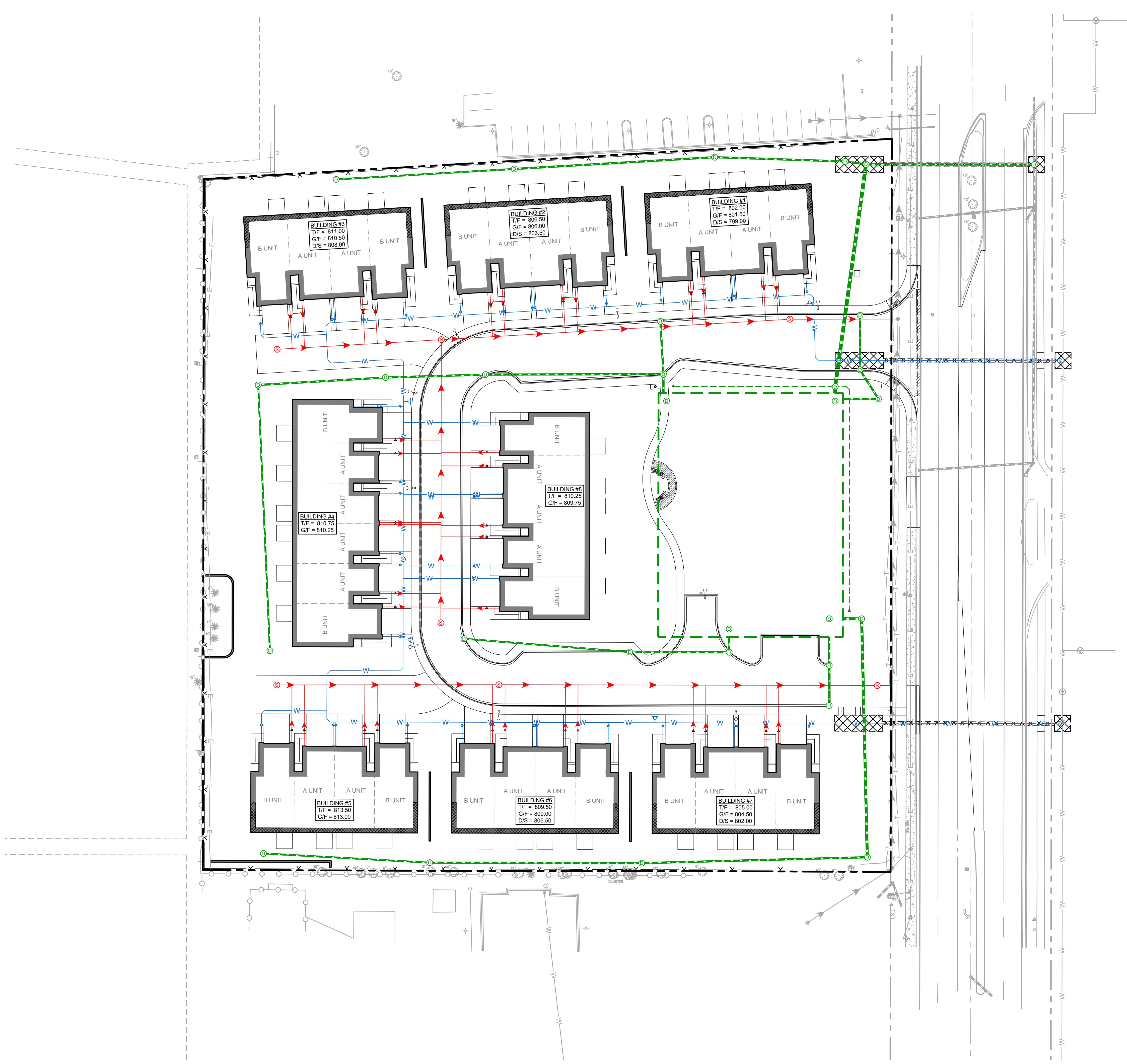
REVISIONS

RS DEVELOPERS, LLC
SCHAUMBURG TOWNHOME DEVELOPMENT
 818-860 ROSELLE ROAD
 SCHAUMBURG, IL

PROJ NO: 240062
 ENG: AJB
 DATE: 08/30/2024

SHEET TITLE
SOIL EROSION & SEDIMENT CONTROL DETAILS

SHEET NUMBER
C4.3
 17 OF 31



UTILITY LEGEND

- PROPOSED SANITARY SEWER
- PROPOSED SANITARY MANHOLE
- PROPOSED SANITARY CLEANOUT
- PROPOSED WATER LINE
- PROPOSED WATER VALVE VAULT
- PROPOSED FIRE HYDRANT
- PROPOSED WATER VALVE BOX
- PROPOSED STORM PIPE
- PROPOSED STORM STRUCTURE
- PROPOSED STORM CLEANOUT
- EXISTING WATER LINE
- EXISTING STORM SEWER LINE
- EXISTING SANITARY MANHOLE
- EXISTING FIRE HYDRANT
- EXISTING WATER VALVE BOX
- EXISTING STORM STRUCTURE

2200 CABOT DRIVE
SUITE 325
LISLE, IL 60532
P. 630.598.0007
WWW.CAGECIVIL.COM



AARON J. BRIDER
062-071413
LICENSED PROFESSIONAL ENGINEER
IN THE STATE OF ILLINOIS
Signed: 08/30/2024
Expires: 11/30/2025

REVISIONS

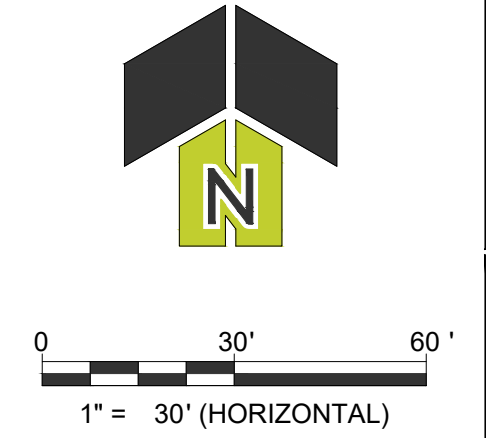
THIS DESIGN AND THESE DRAWINGS ARE THE PROPERTY OF CAGE ENGINEERING, INC. NO PART OF THIS WORK MAY BE REPRODUCED WITHOUT PRIOR WRITTEN PERMISSION FROM CAGE ENGINEERING, INC.

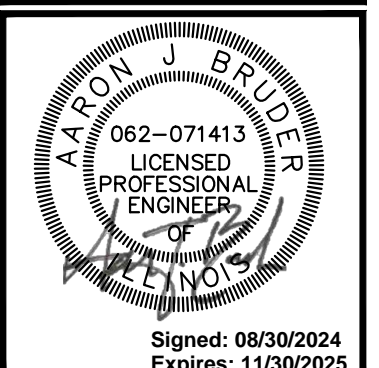
RS DEVELOPERS, LLC
SCHAUMBURG TOWNHOME DEVELOPMENT
818-860 ROSELLE ROAD
SCHAUMBURG, IL

PROJ NO: 240062
ENG: AJB
DATE: 08/30/2024

SHEET TITLE
SITE UTILITY PLAN - OVERALL

SHEET NUMBER
C5.0
18 OF 31



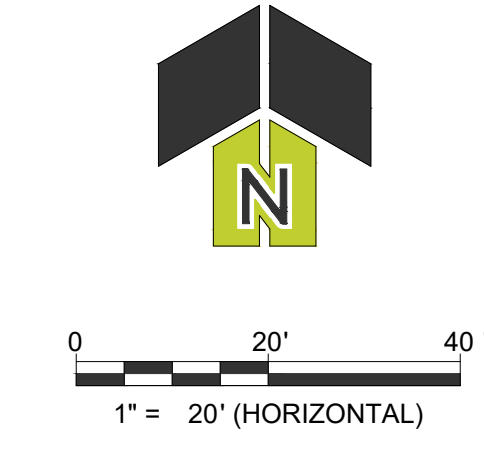
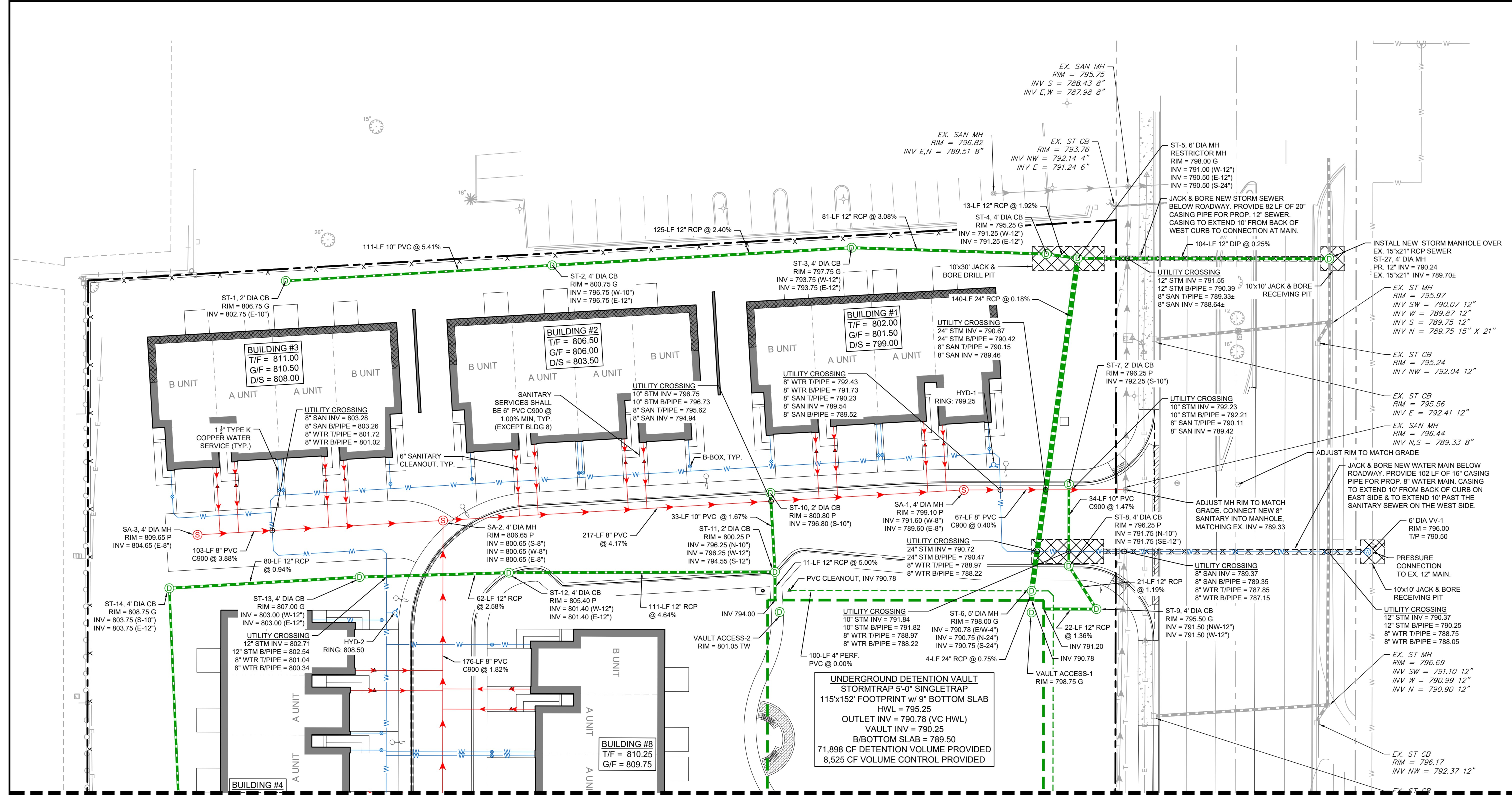


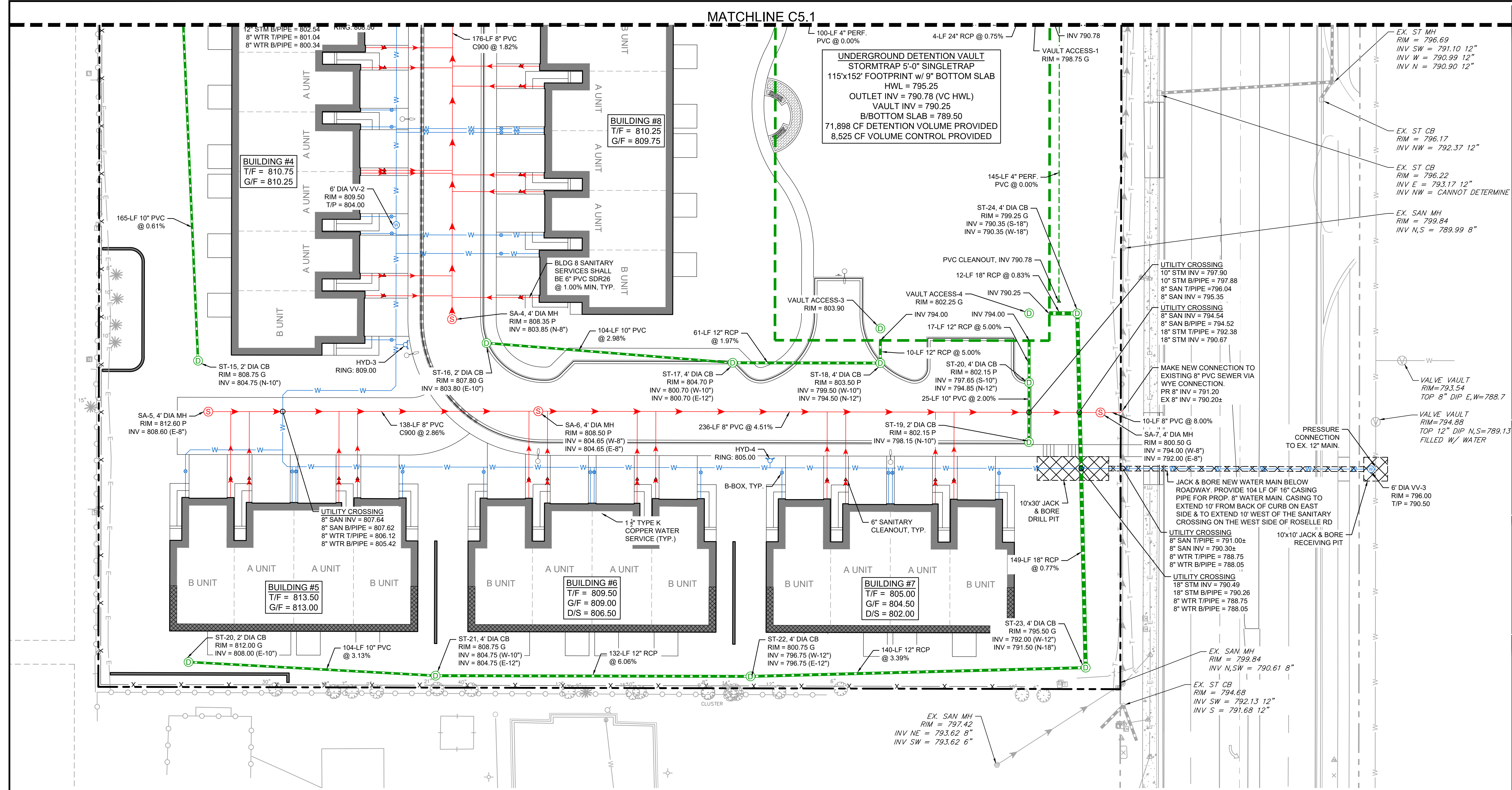
REVISIONS

NO.	DESCRIPTION

RS DEVELOPERS, LLC
SCHAUMBURG TOWNHOME DEVELOPMENT
 818-860 ROSELLE ROAD
 SCHAUMBURG, IL

PROJ NO: 240062
 ENG: AJB
 DATE: 08/30/2024
 SHEET TITLE
SITE UTILITY PLAN - NORTH
 SHEET NUMBER
C5.1
 19 OF 31





UNDERGROUND DETENTION VAULT
 STORMTRAP 5'-0" SINGLETRAP
 115x152' FOOTPRINT w/ 9" BOTTOM SLAB
 HWL = 795.25
 OUTLET INV = 790.78 (VC HWL)
 VAULT INV = 790.25
 B/BOTTOM SLAB = 789.50
 71,898 CF DETENTION VOLUME PROVIDED
 8,525 CF VOLUME CONTROL PROVIDED

BUILDING #4
 T/F = 810.75
 G/F = 810.25

BUILDING #8
 T/F = 810.25
 G/F = 809.75

BUILDING #5
 T/F = 813.50
 G/F = 813.00

BUILDING #6
 T/F = 809.50
 G/F = 809.00
 D/S = 806.50

BUILDING #7
 T/F = 805.00
 G/F = 804.50
 D/S = 802.00

UTILITY LEGEND

	PROPOSED SANITARY SEWER
	PROPOSED SANITARY MANHOLE
	PROPOSED SANITARY CLEANOUT
	PROPOSED WATER LINE
	PROPOSED WATER VALVE VAULT
	PROPOSED FIRE HYDRANT
	PROPOSED WATER VALVE BOX
	PROPOSED STORM PIPE
	PROPOSED STORM STRUCTURE
	PROPOSED STORM CLEANOUT
	EXISTING SANITARY SEWER LINE
	EXISTING WATER LINE
	EXISTING STORM SEWER LINE
	EXISTING SANITARY MANHOLE
	EXISTING FIRE HYDRANT
	EXISTING WATER VALVE BOX
	EXISTING STORM STRUCTURE

2200 CABOT DRIVE
 SUITE 325
 LISLE, IL 60532
 P. 630.598.0007
 WWW.CAGEVIL.COM

CAGE
 CIVIL ENGINEERING

AARON J BRIDER
 062-071413
 LICENSED PROFESSIONAL ENGINEER
 State of Illinois
 Signed: 08/30/2024
 Expires: 11/30/2025

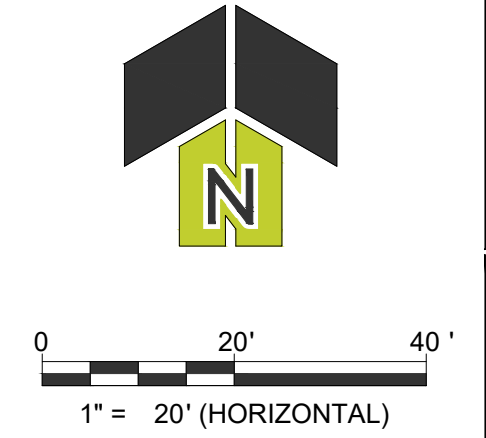
REVISIONS

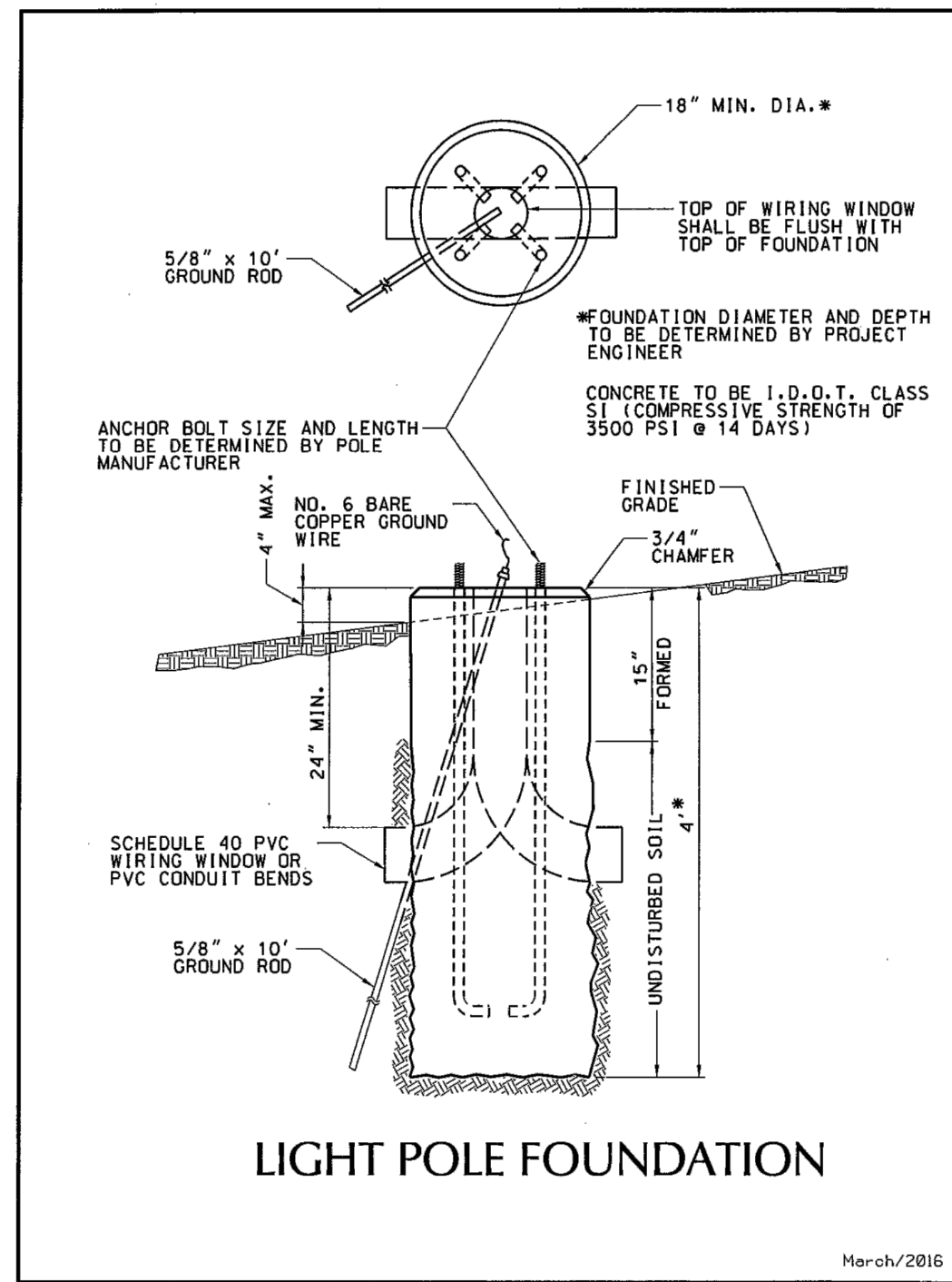
RS DEVELOPERS, LLC
SCHAUBURG TOWNHOME DEVELOPMENT
 818-860 ROSELLE ROAD
 SCHAUBURG, IL

PROJ NO: 240062
 ENG: AJB
 DATE: 08/30/2024

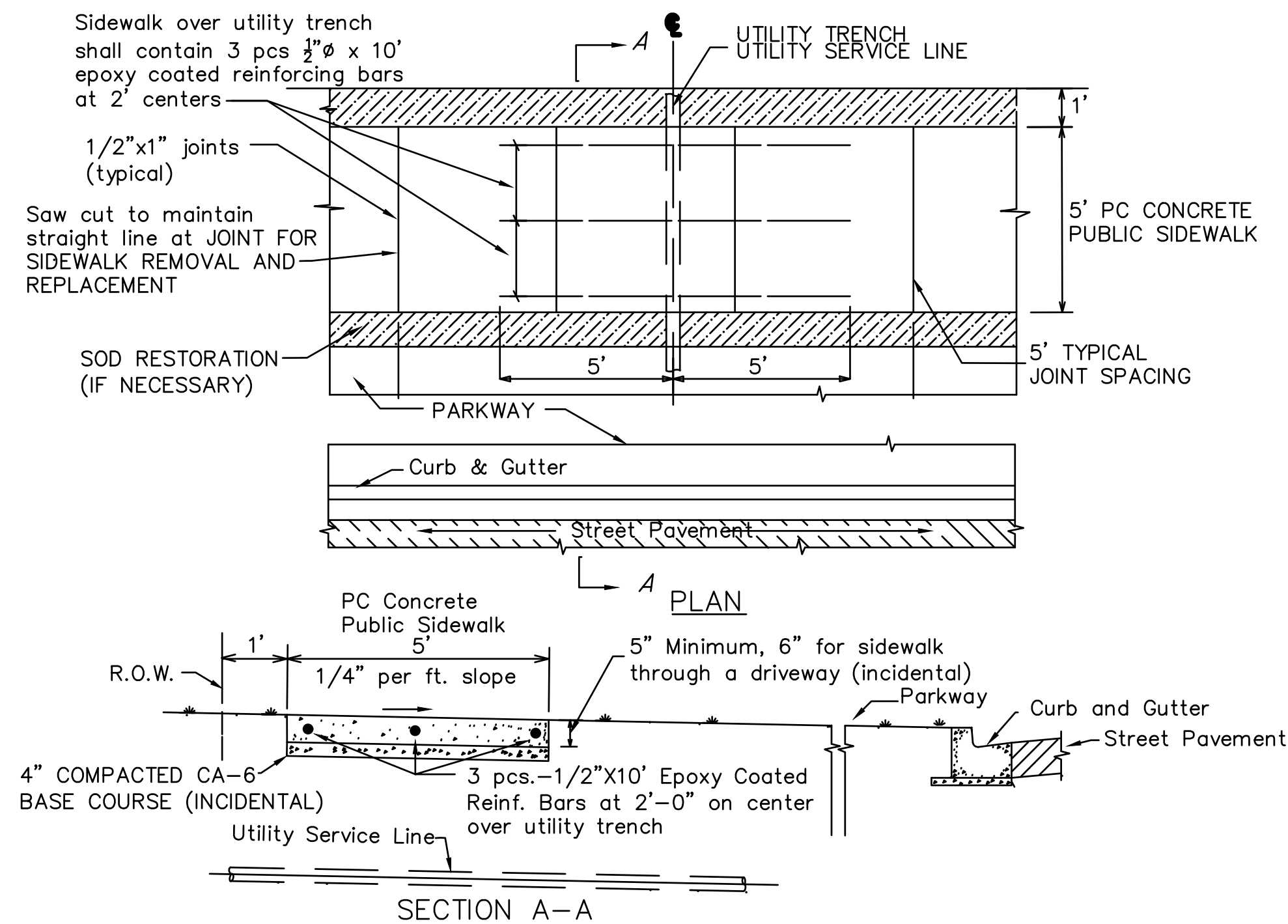
SHEET TITLE
SITE UTILITY PLAN - SOUTH

SHEET NUMBER
C5.2
 20 OF 31

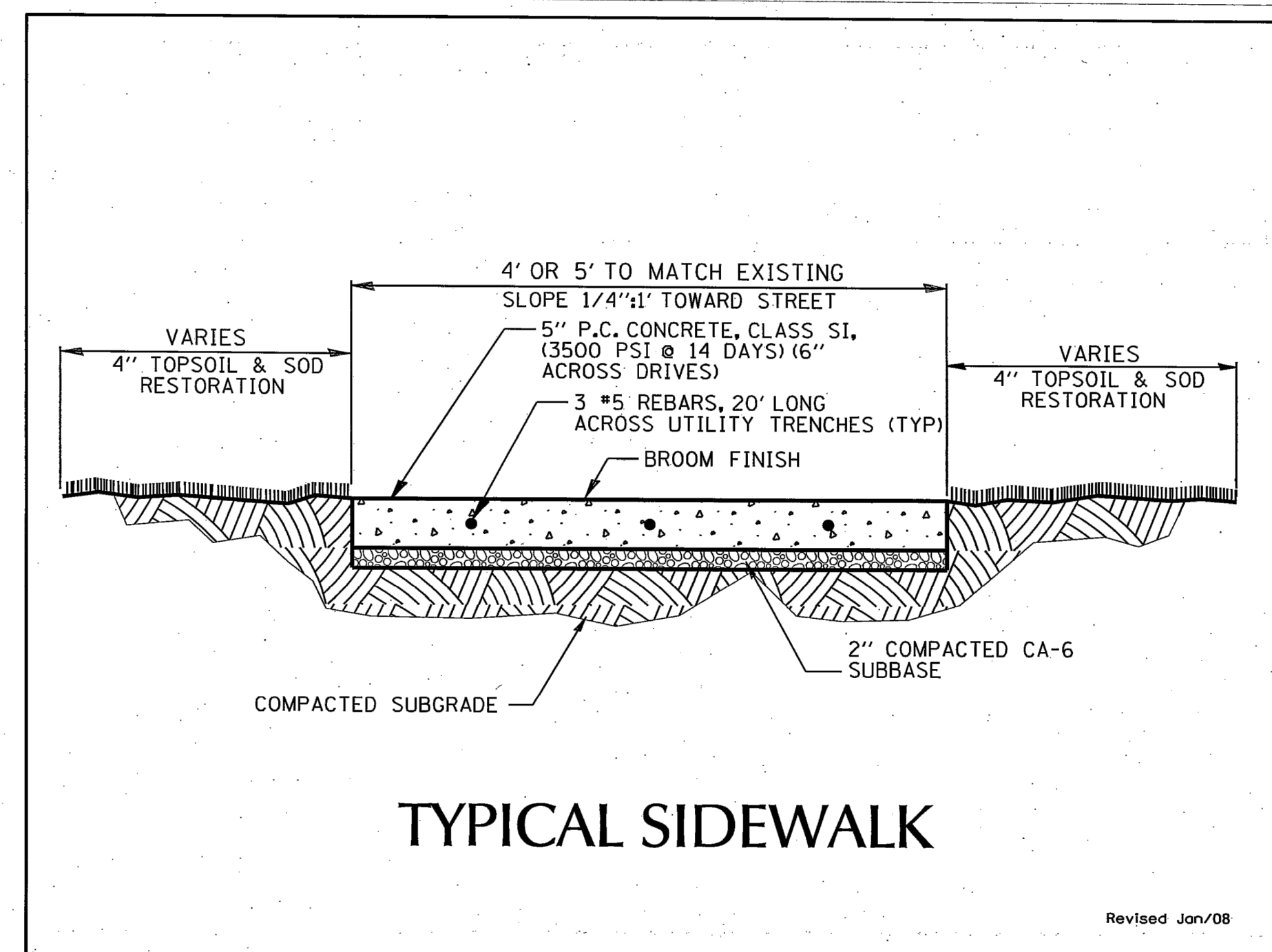




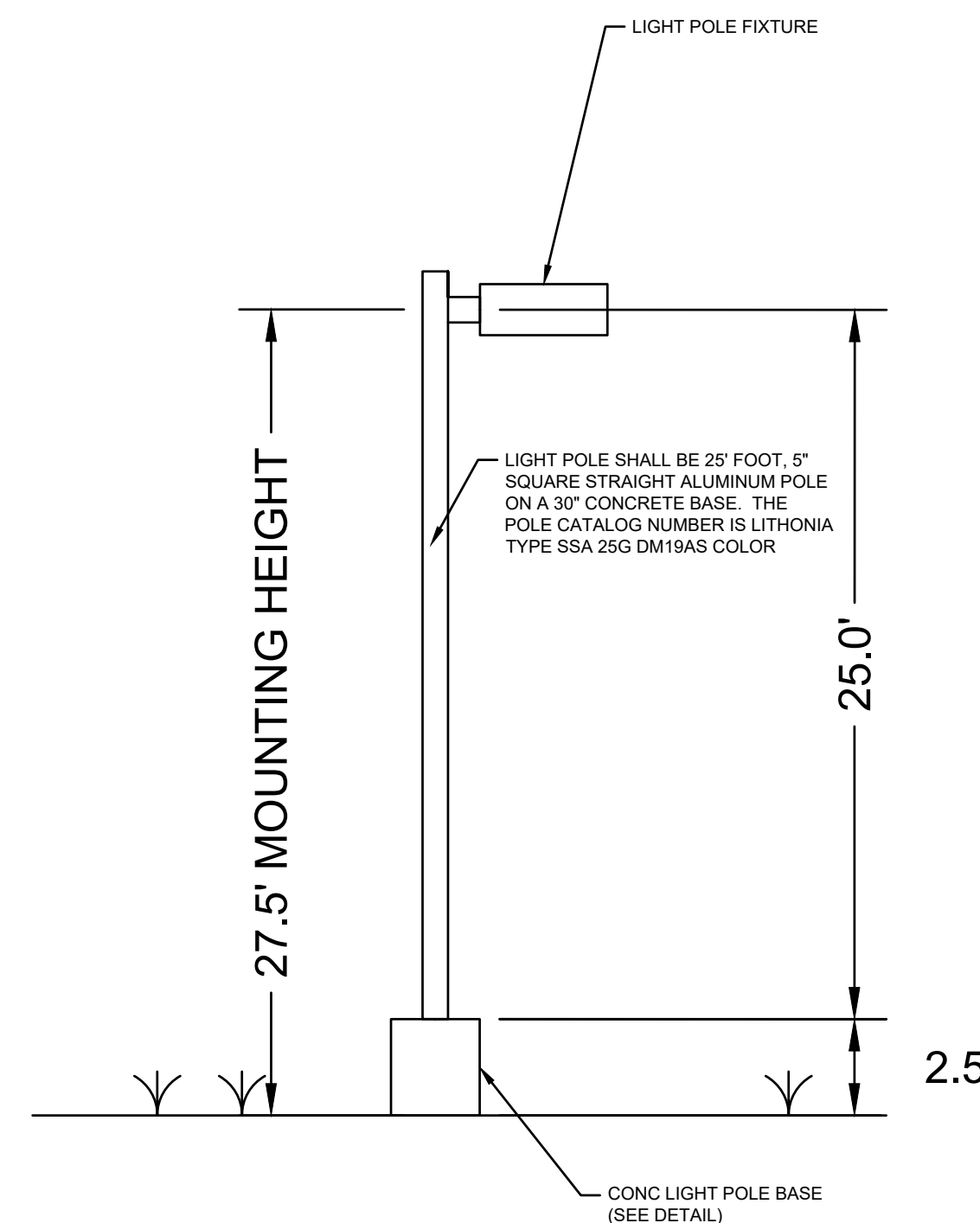
LIGHT POLE FOUNDATION DETAIL
Scale: NOT TO SCALE



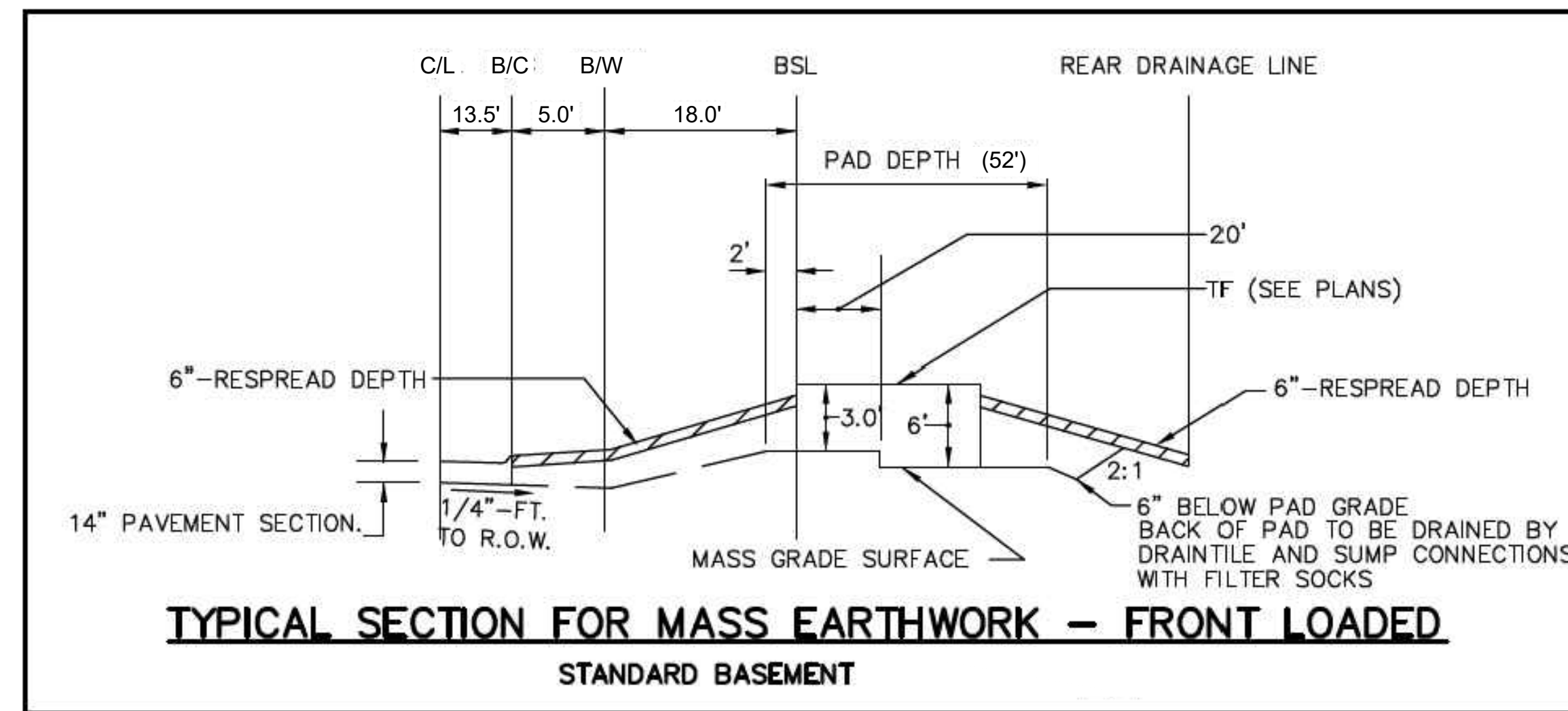
PUBLIC CONCRETE SIDEWALK DETAIL
Scale: NOT TO SCALE



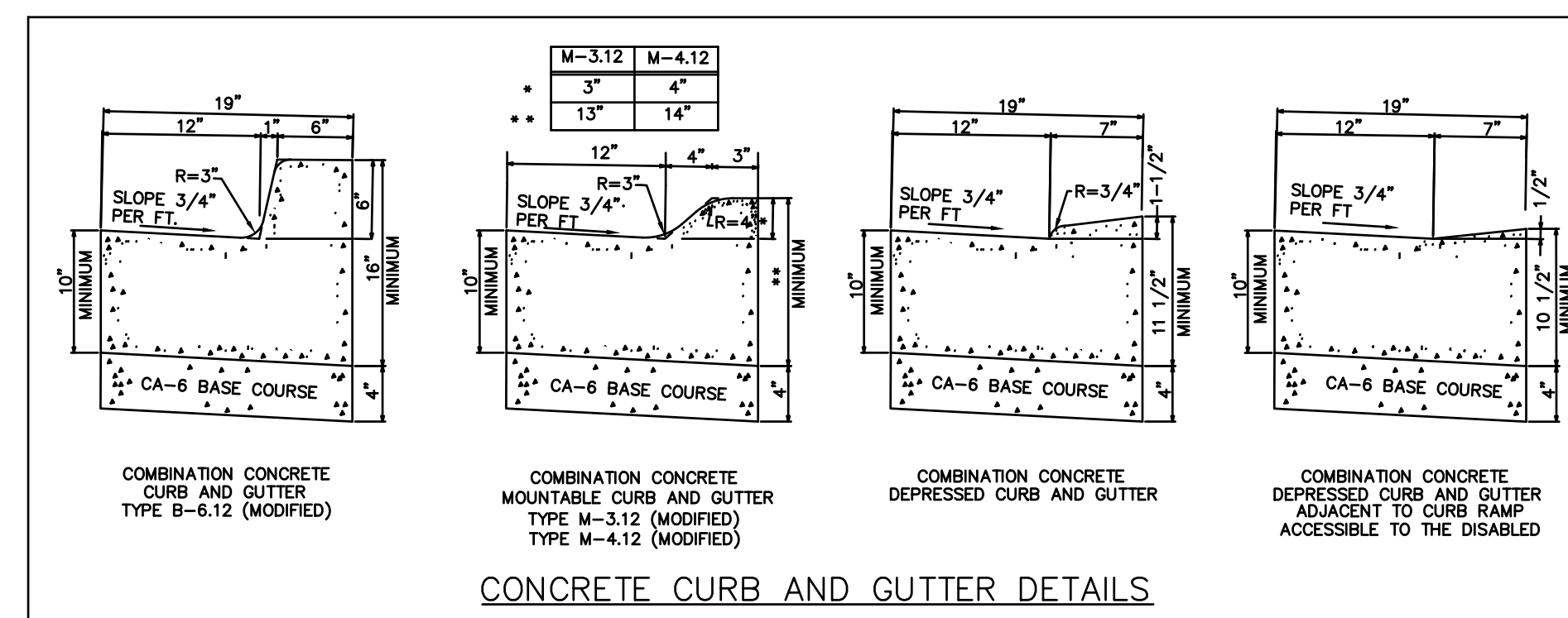
PRIVATE CONCRETE SIDEWALK DETAIL
Scale: NOT TO SCALE



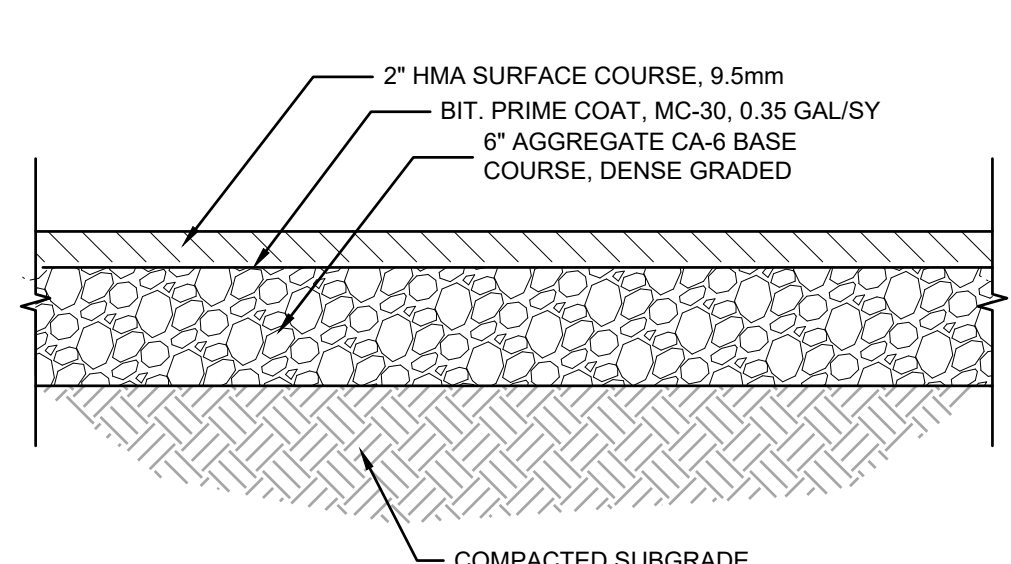
LIGHT POLE DETAIL
Scale: NOT TO SCALE



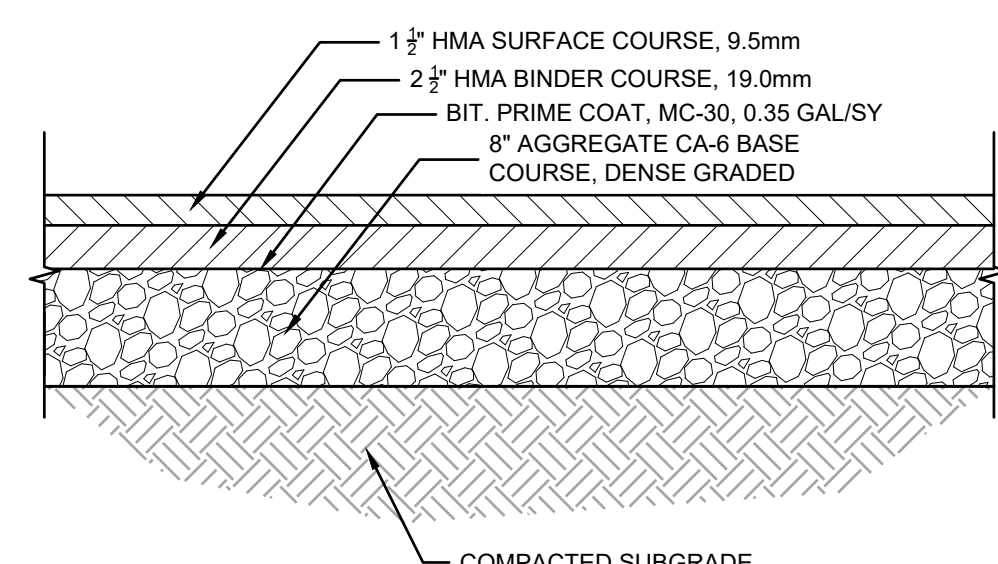
TYPICAL SECTION FOR MASS EARTHWORK DETAIL
Scale: NOT TO SCALE



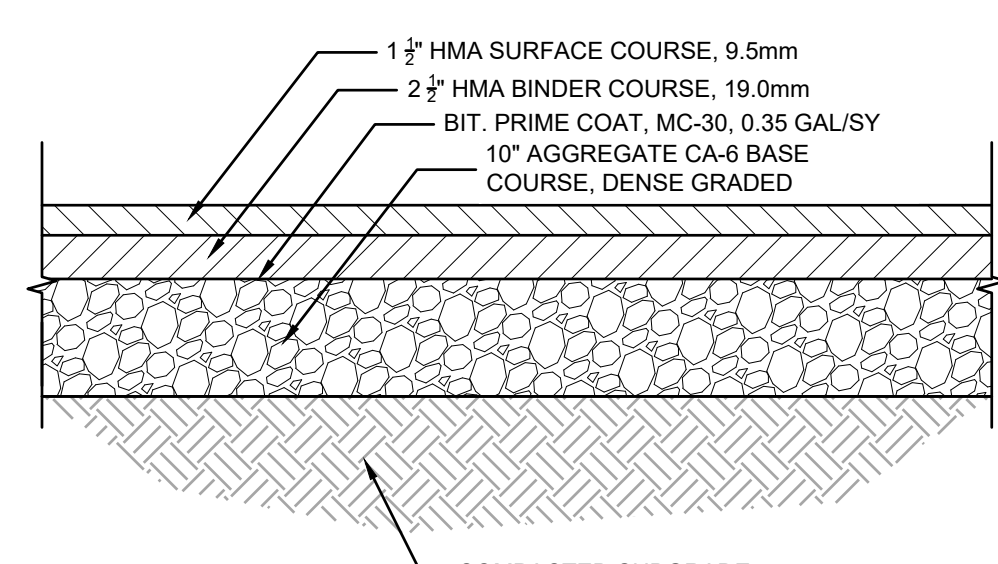
CURB & GUTTER DETAIL
Scale: NOT TO SCALE



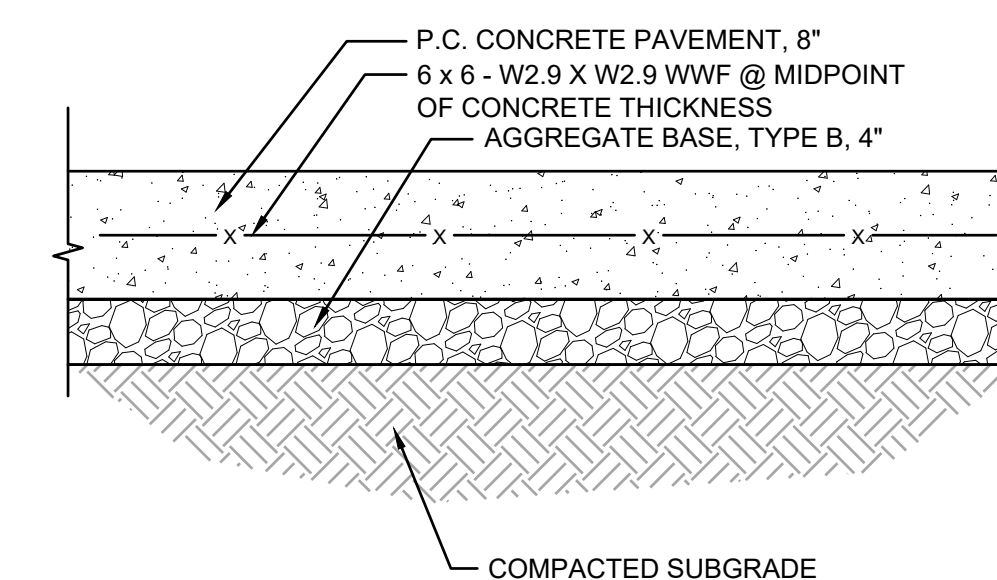
DRIVEWAY ASPHALT PAVEMENT DETAIL
Scale: NOT TO SCALE



ALLEY ASPHALT PAVEMENT DETAIL
Scale: NOT TO SCALE



ROADWAY ASPHALT PAVEMENT DETAIL
Scale: NOT TO SCALE



HEAVY DUTY CONCRETE PAVEMENT DETAIL
Scale: NOT TO SCALE

2200 CABOT DRIVE
SUITE 325
LISLE, IL 60532
P. 630.598.0007
WWW.CAGECIVIL.COM

CAGE CIVIL ENGINEERING

AARON J. BRIDER
062-071413
LICENSED PROFESSIONAL ENGINEER
STATE OF ILLINOIS
Signed: 08/30/2024
Expires: 11/30/2025

REVISIONS

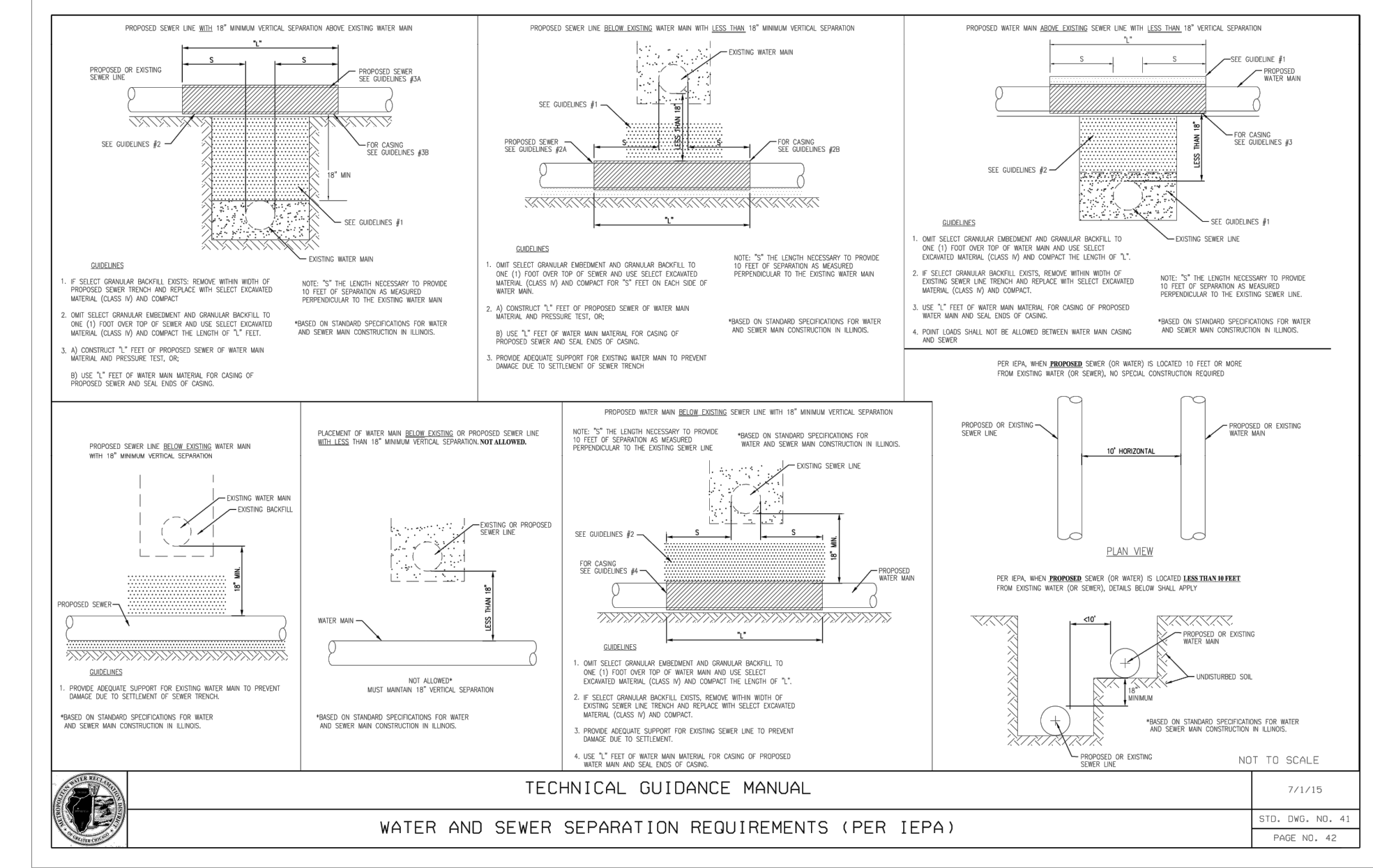
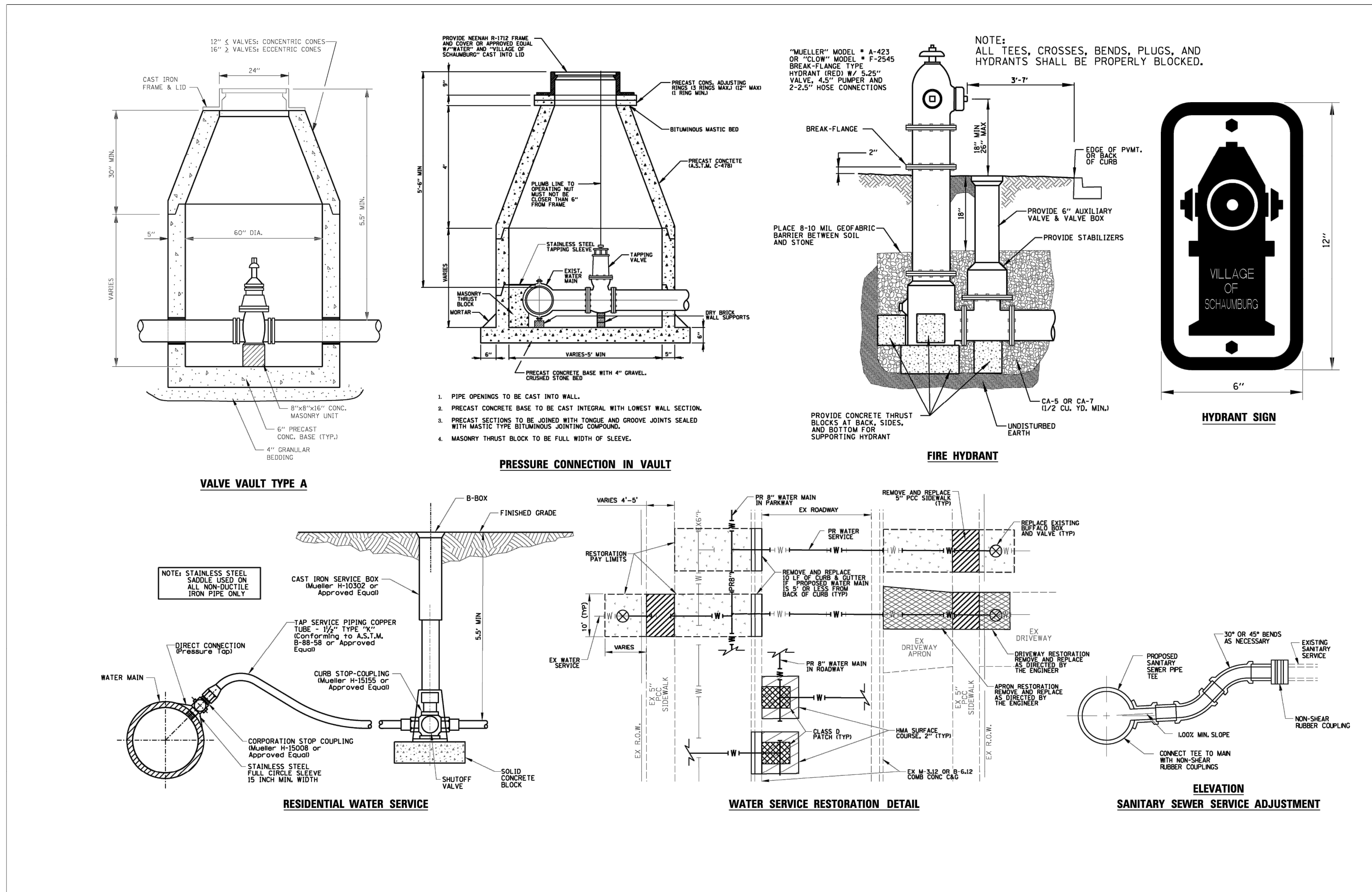
THIS DESIGN AND THESE DRAWINGS ARE THE PROPERTY OF CAGE ENGINEERING, INC. NO PART OF THIS WORK MAY BE REPRODUCED OR TRANSMITTED IN ANY FORM OR BY ANY MEANS, ELECTRONIC OR MECHANICAL, WITHOUT PERMISSION FROM CAGE ENGINEERING, INC.

RS DEVELOPERS, LLC
SCHAUMBURG TOWNHOME DEVELOPMENT
818-860 ROSELLE ROAD
SCHAUMBURG, IL

PROJ NO: 240062
ENG: AJB
DATE: 08/30/2024

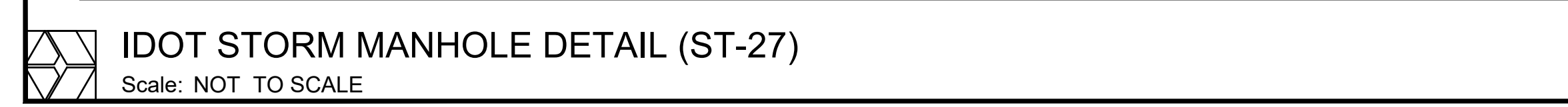
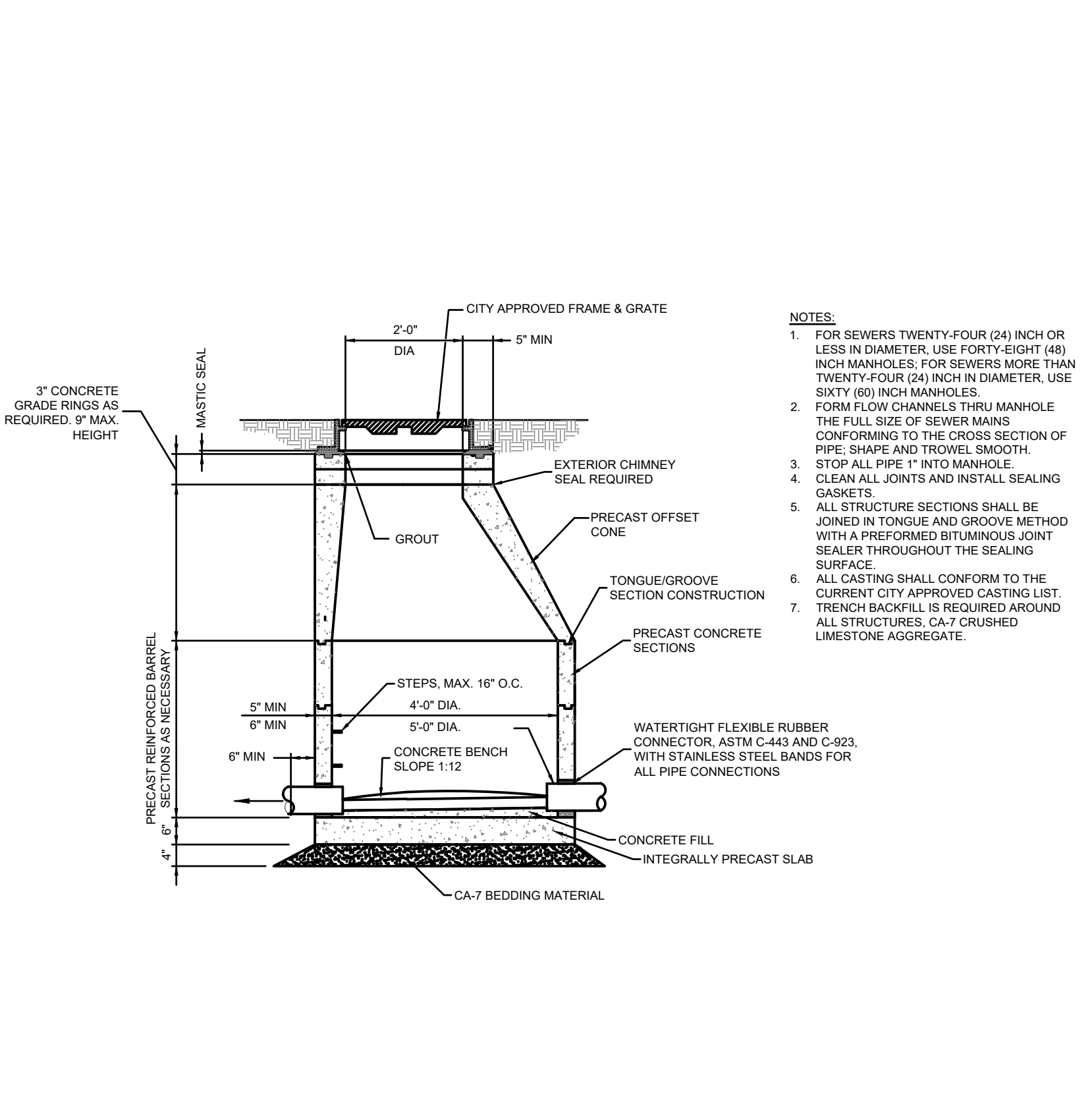
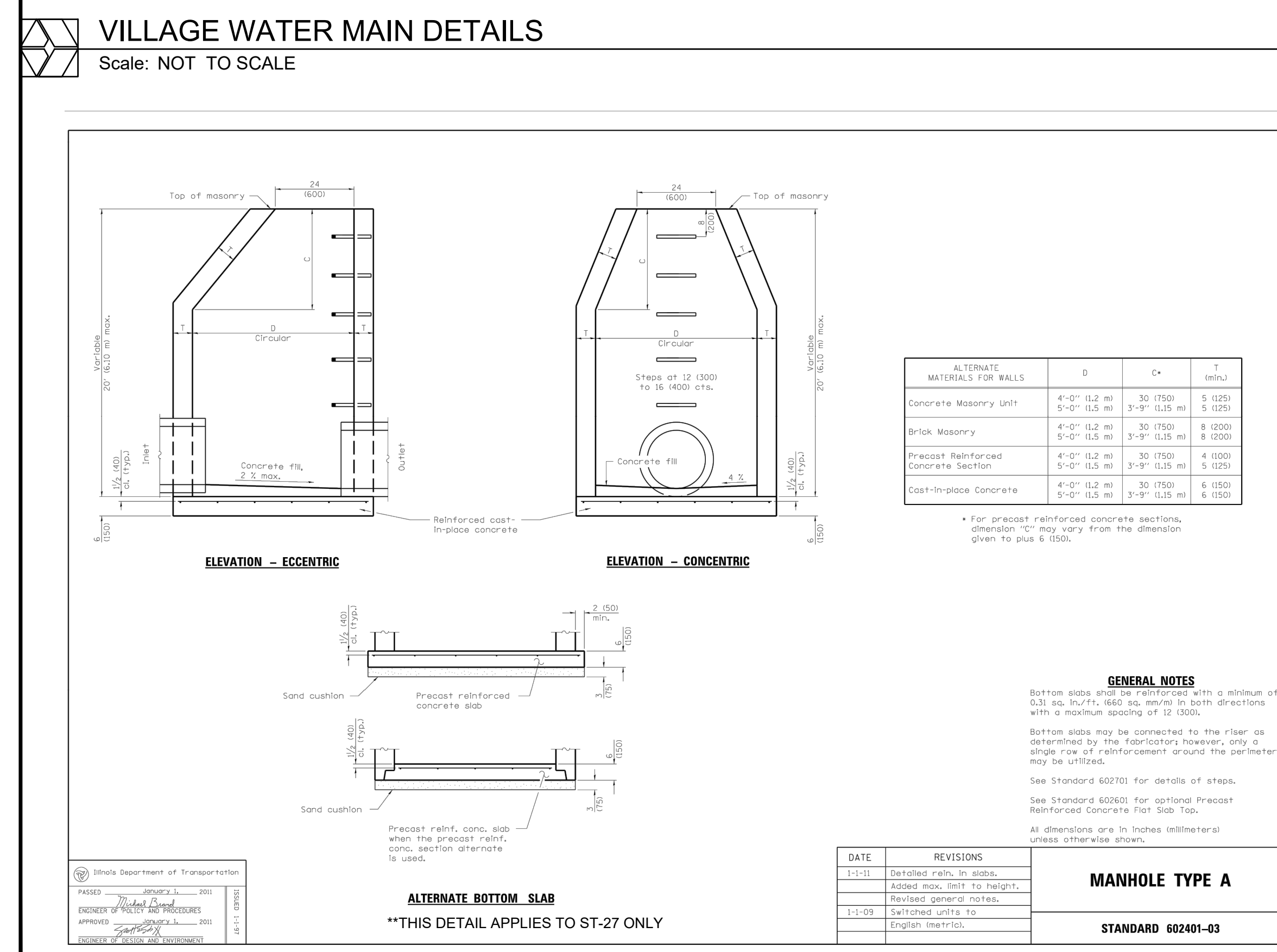
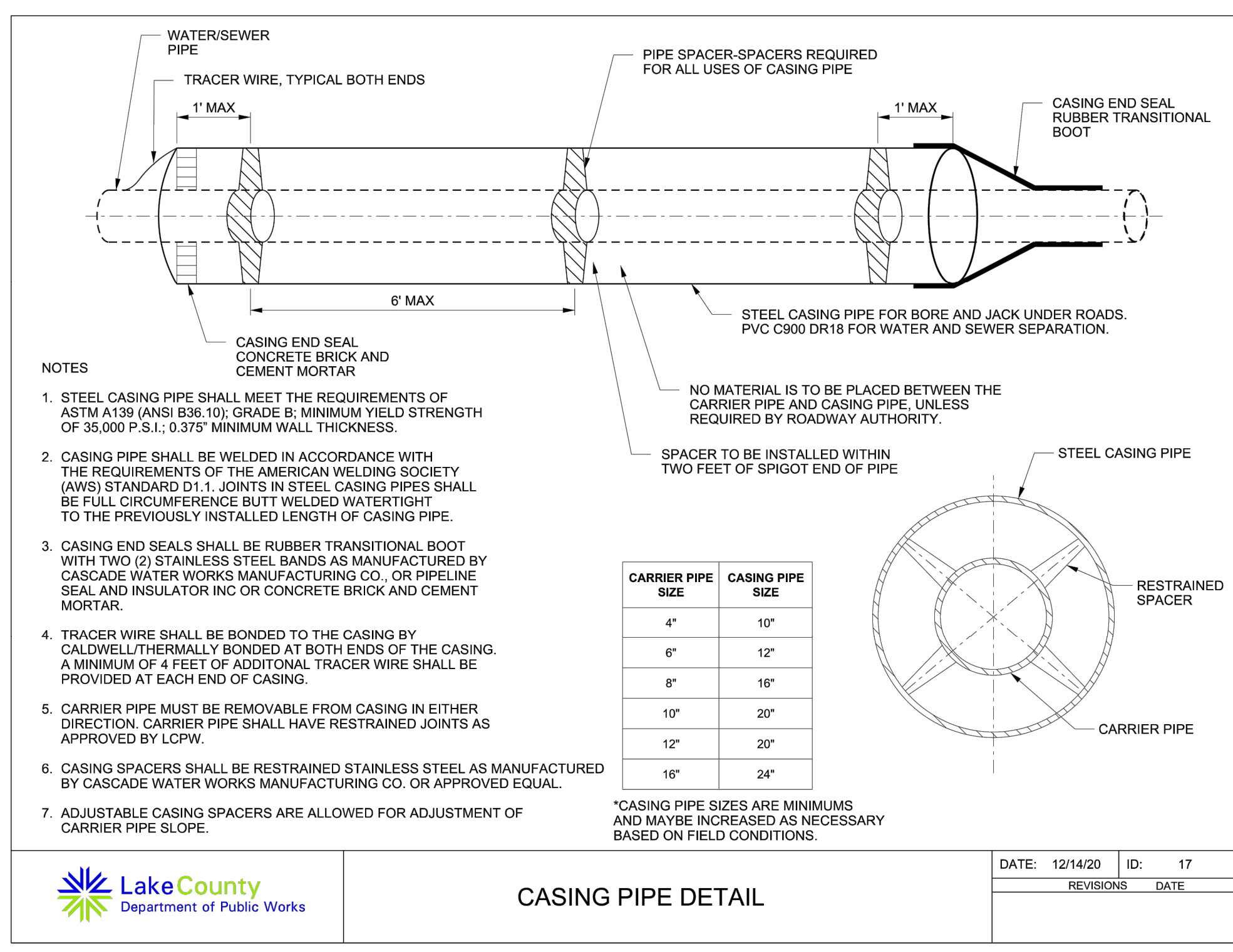
SHEET TITLE
CONSTRUCTION DETAILS

SHEET NUMBER
C6.0
21 OF 31



WATER AND SEWER SEPARATION REQUIREMENTS

Scale: NOT TO SCALE



2200 CABOT DRIVE
SUITE 325
LISLE, IL 60532
P. 630.598.0007
WWW.CAGEVIL.COM

CAGE
CIVIL ENGINEERING

AARON J BRIDER
062-071413
LICENSED PROFESSIONAL ENGINEER
STATE OF ILLINOIS

Signed: 08/30/2024
Expires: 11/30/2025

REVISIONS

THIS DESIGN AND THESE DRAWINGS ARE THE PROPERTY OF CAGE ENGINEERING, INC. NO PART OF THIS WORK MAY BE REPRODUCED WITHOUT PRIOR WRITTEN PERMISSION FROM CAGE ENGINEERING, INC.

RS DEVELOPERS, LLC
SCHAUMBURG TOWNHOME DEVELOPMENT
818-860 ROSELLE ROAD
SCHAUMBURG, IL

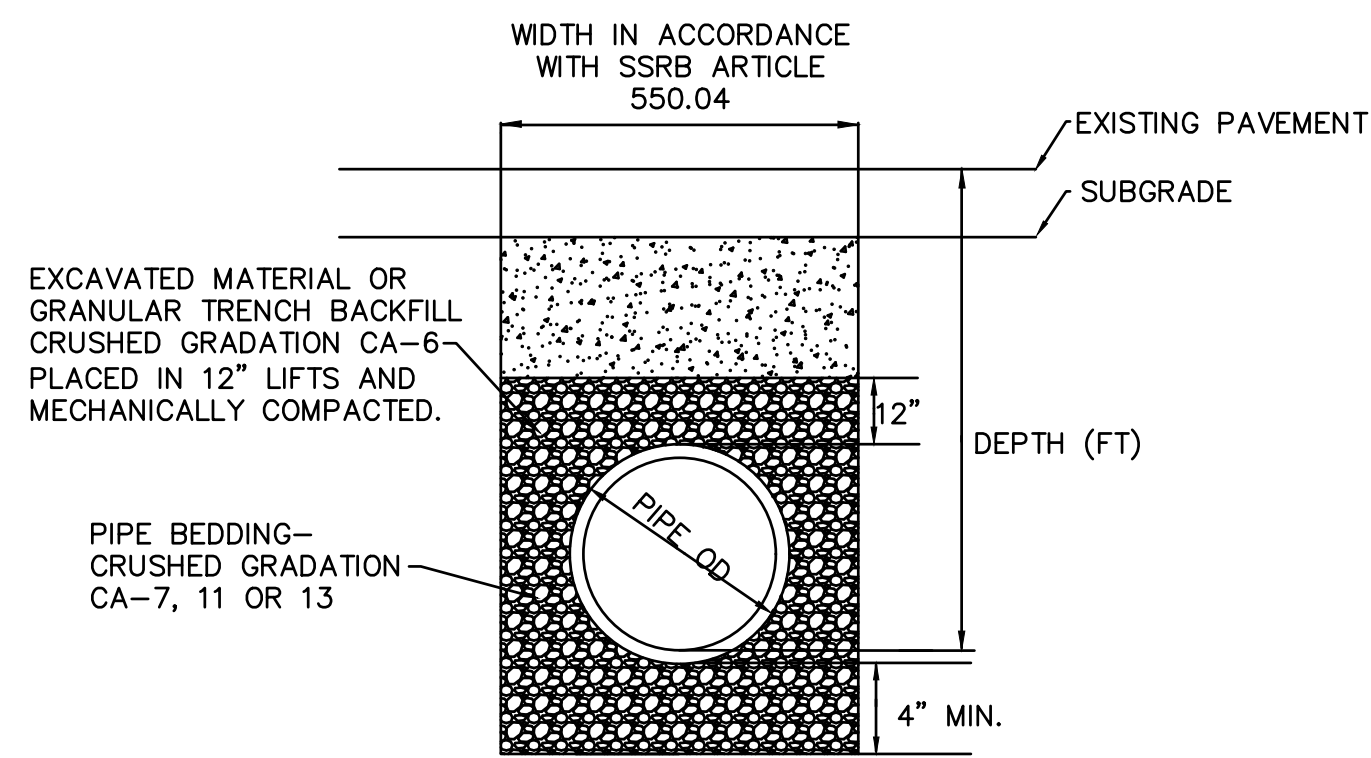
PROJ NO: 240062
ENG: AJB
DATE: 08/30/2024

SHEET TITLE
CONSTRUCTION DETAILS

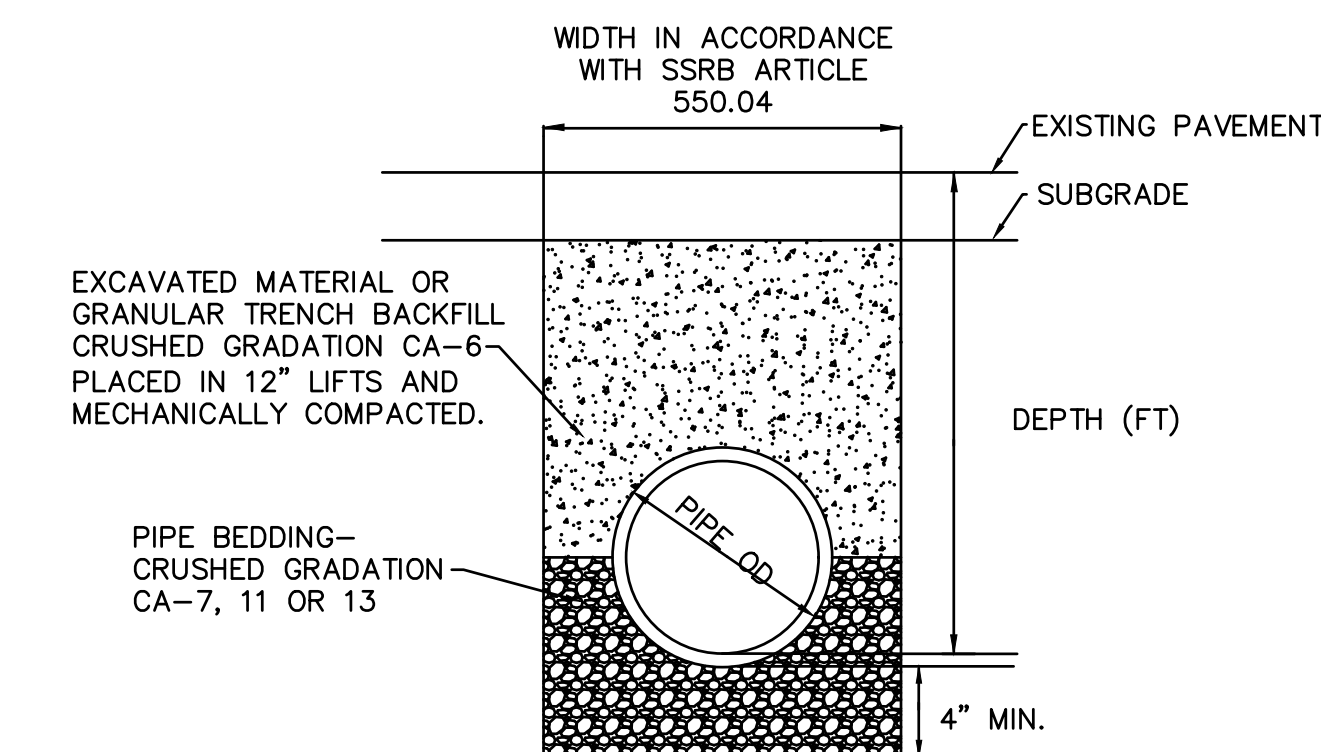
SHEET NUMBER
C6.1

22 OF 31

ALL TRENCH BACKFILL WILL BE MEASURED USING THE IDOT TRENCH BACKFILL TABLES



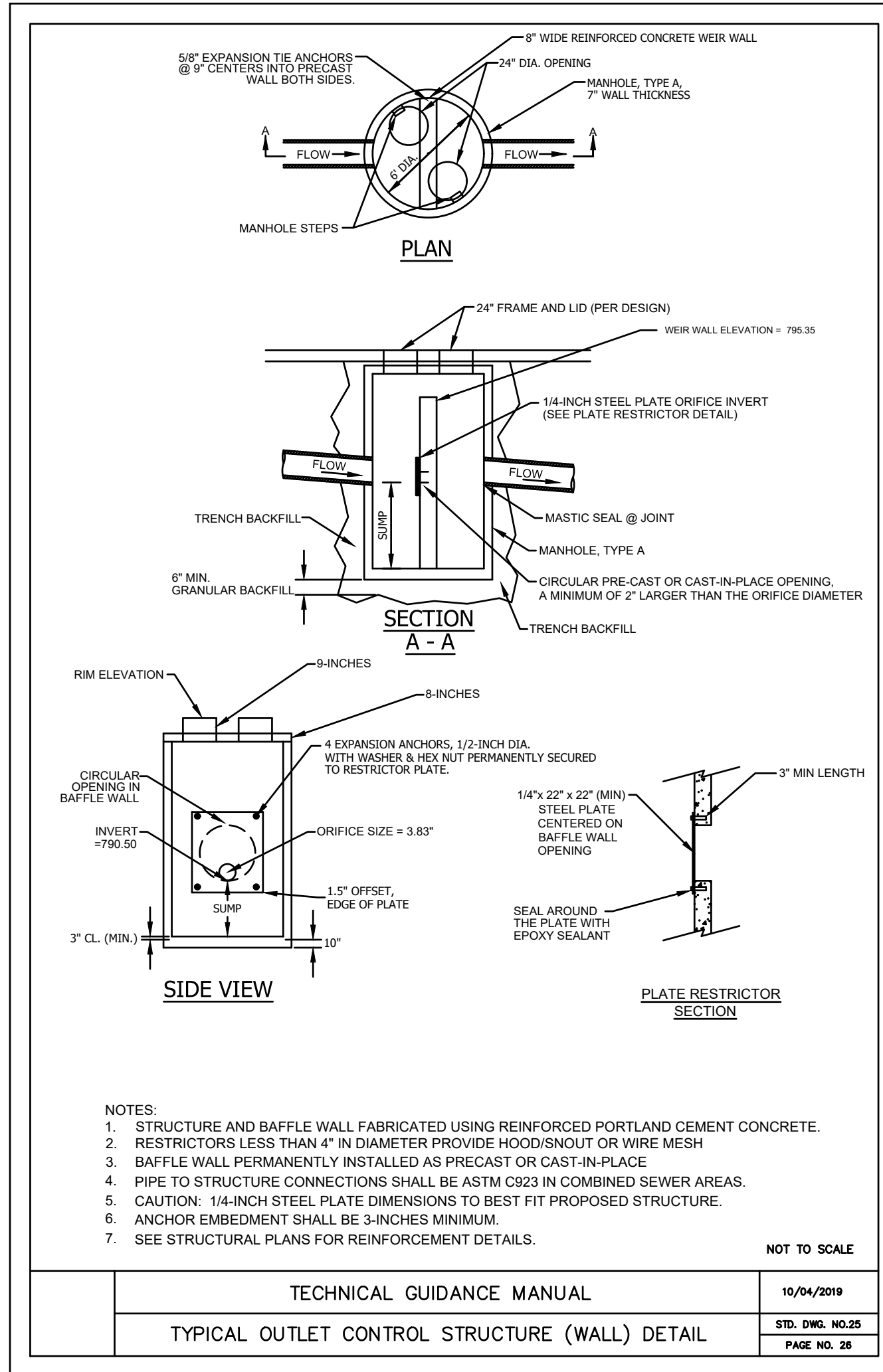
TRENCH BACKFILL DETAIL
PVC SEWER



TRENCH BACKFILL DETAIL
ALL SEWER AND WATER
(EXCEPT PVC)

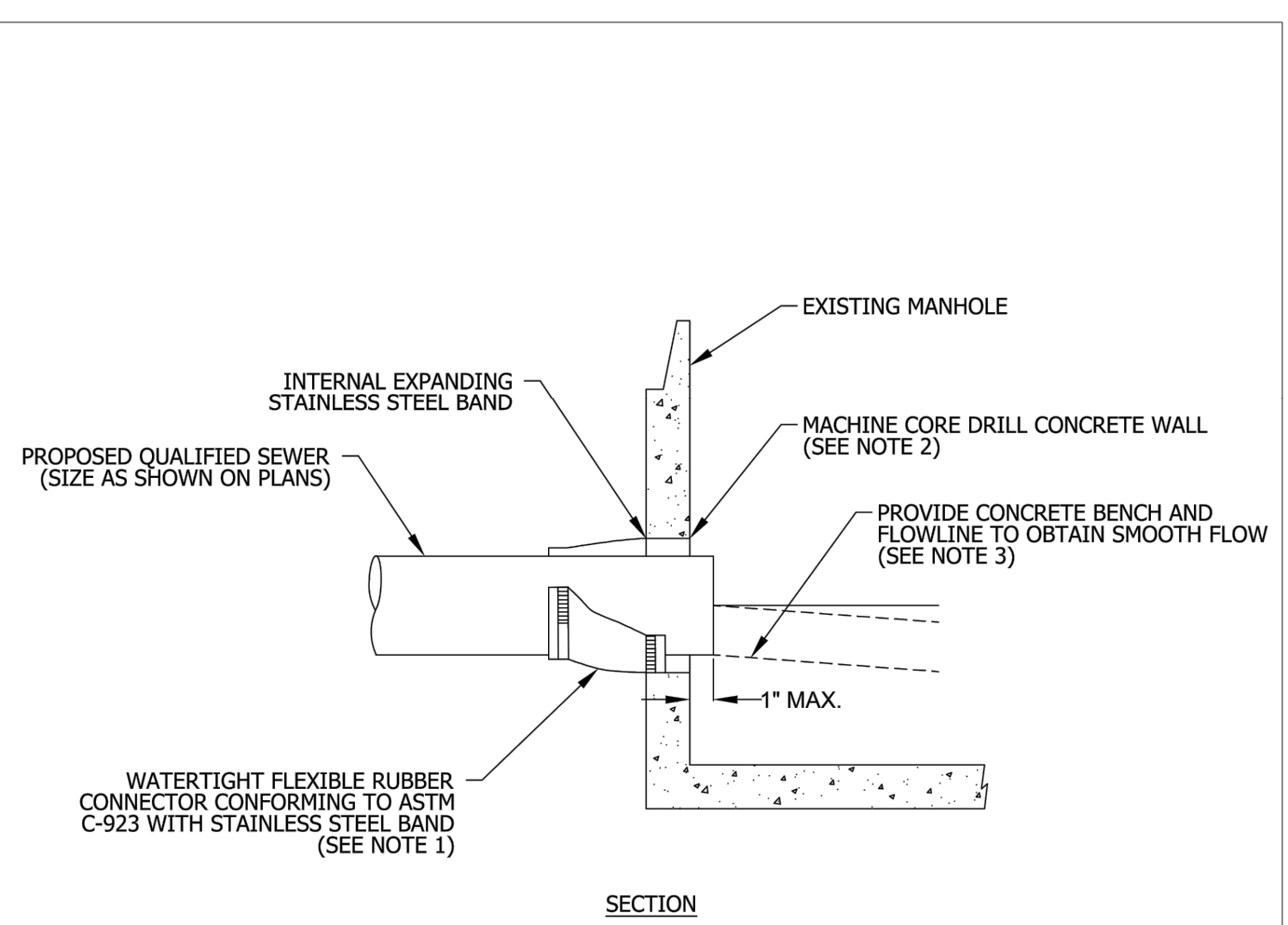
TRENCH BACKFILL DETAIL

Scale: NOT TO SCALE



RESTRICTOR MANHOLE DETAIL

Scale: NOT TO SCALE

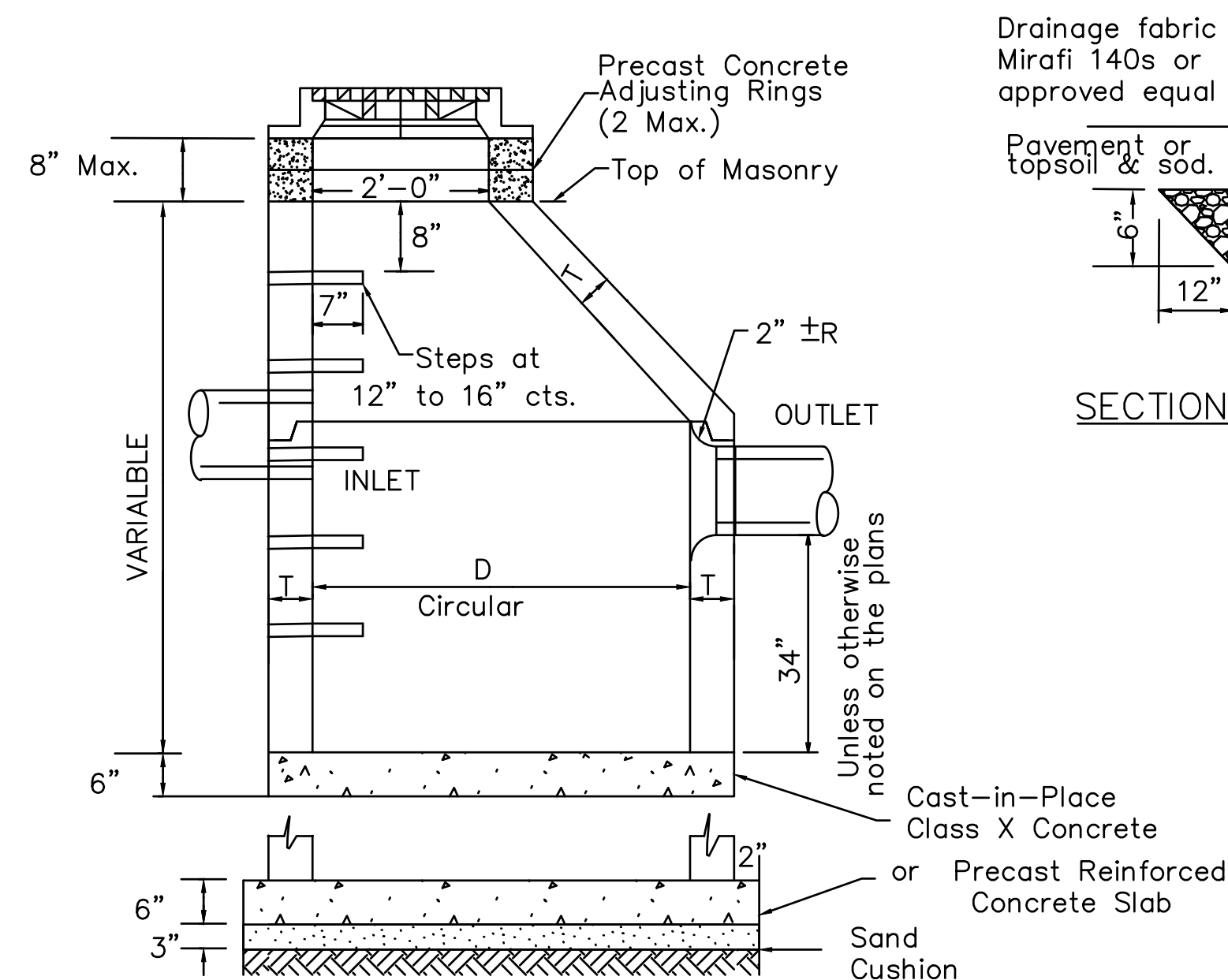


- NOTES:
1. RESILIENT CONNECTOR COMPLYING WITH ASTM STANDARD C-923 (MOST RECENT EDITION) SHALL BE USED.
 2. MACHINE CORE/DRILL CIRCULAR OPENING IN STRUCTURE WALL. OPENING DIAMETER TO FIT THE REQUIRED RESILIENT CONNECTOR PER MANUFACTURER'S RECOMMENDATION.
 3. CUT, SHAPE, AND SLOPE NEW INVERT CHANNEL IN THE EXISTING CONCRETE BENCH FOR SMOOTH FLOW.
 4. CLEAN EXISTING STRUCTURE AND SEWER PIPE OF ANY DIRT, CONCRETE, OR DEBRIS WHICH MAY ACCUMULATE DURING THE CONSTRUCTION PROCESS.
 5. ANY DAMAGE TO THE EXISTING MANHOLE SHALL BE REPAIRED BY THE CONTRACTOR.
 6. REINFORCED CONCRETE COLLAR MAY BE SUBSTITUTED FOR PIPE DIAMETERS LARGER THAN 36-INCHES.

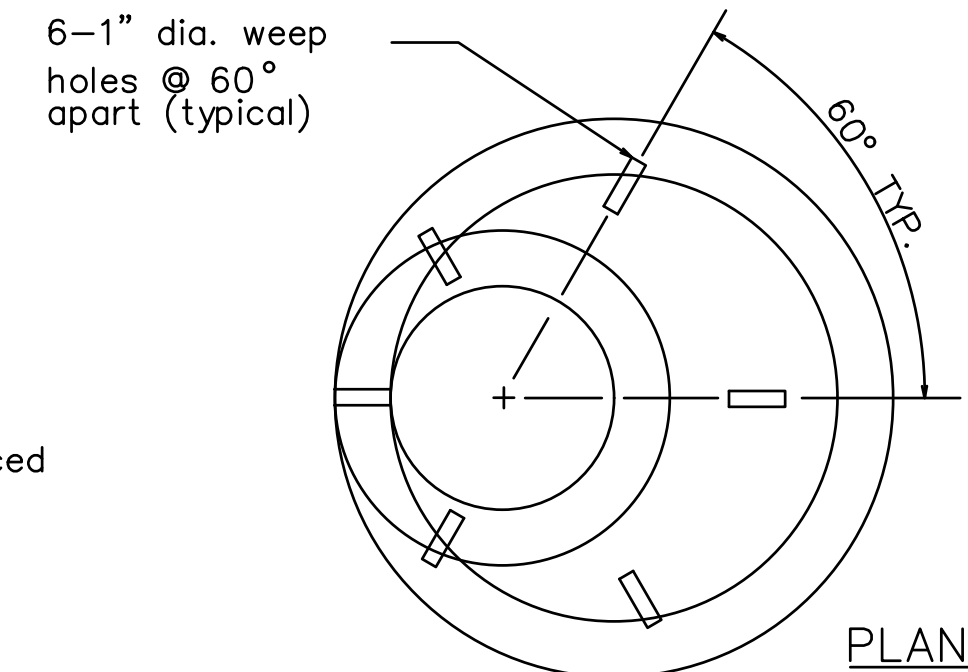
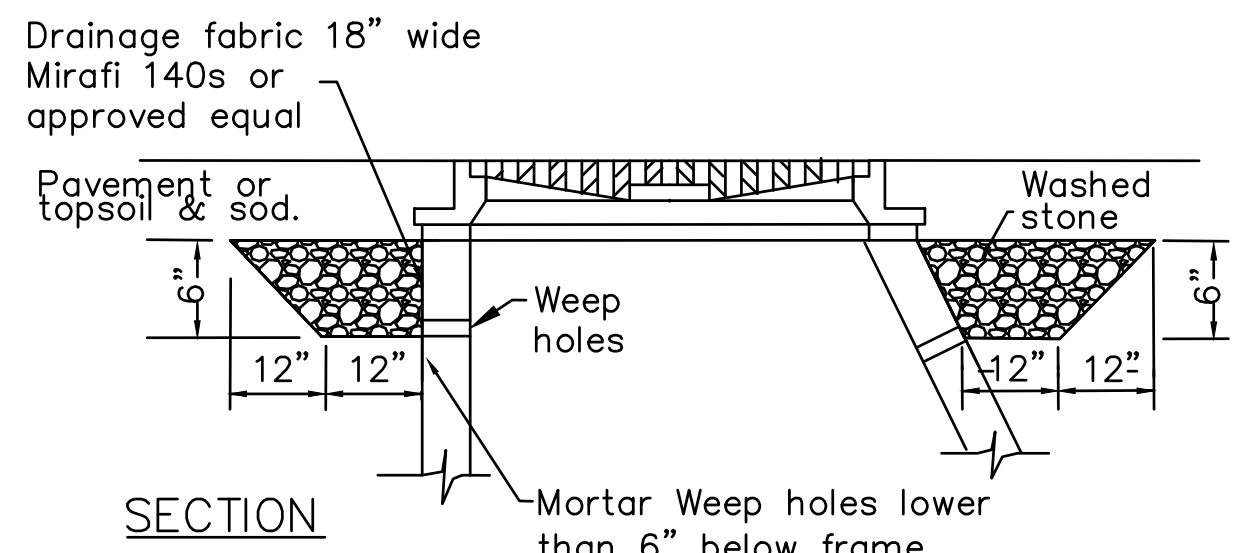
TECHNICAL GUIDANCE MANUAL	10/04/2019
PIPE TO EXISTING MANHOLE CONNECTION DETAIL	10/02/18
STD. DWG. NO. 42	PAGE NO. 43

CONNECTION TO EXISTING MANHOLE DETAIL

Scale: NOT TO SCALE

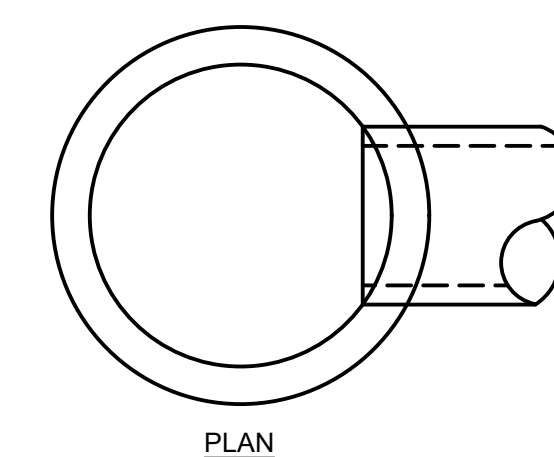


- NOTES:
1. Type A Catch Basin shall be furnished frame & lid as shown in general notes.
 2. All Catch Basins shall be 4'-0" in diam., unless noted on the plans.
 3. Dimension for Precast Reinforced Concrete Risers may vary from the dimension to plus 6".
 4. See drawings for elev. of invert & diam. of sewer.
 5. Precast Adjusting Rings, 2 ea. max. 8" in height.
 6. Steps shall be embedded into the wall with a minimum depth of 3".
 7. For structures within combined sewer areas, pipe and structure connections shall be watertight in accordance with ASTM C923.



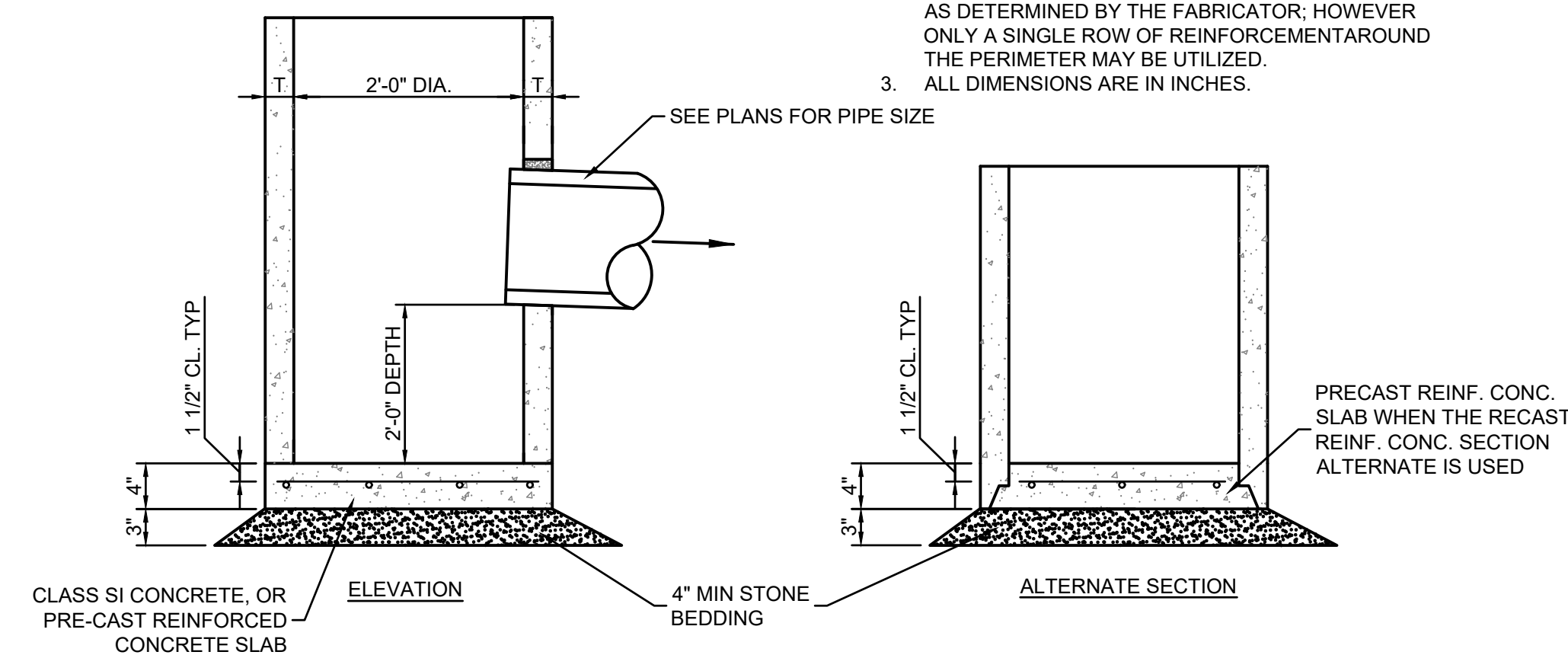
(CONC. CONE RISER)

MATERIAL FOR WALLS	D	C	T (Min.)
Precast Reinforced Concrete Risers	4'-0"	2'-6"	4"
	5'-0"	3'-9"	5"



WALL SECTION	T
CAST IN PLACE CONCRETE	6"
PRECAST REINFORCED CONCRETE	3"

- GENERAL NOTES:
1. BOTTOM SLABS SHALL BE REINFORCED WITH A MINIMUM OF 0.24 SQ. IN./FT. IN BOTH DIRECTIONS WITH A MAXIMUM SPACING OF 10"
 2. BOTTOM SLABS MAY BE CONNECTED TO THE RISER AS DETERMINED BY THE FABRICATOR, HOWEVER ONLY A SINGLE ROW OF REINFORCEMENT AROUND THE PERIMETER MAY BE UTILIZED.
 3. ALL DIMENSIONS ARE IN INCHES.



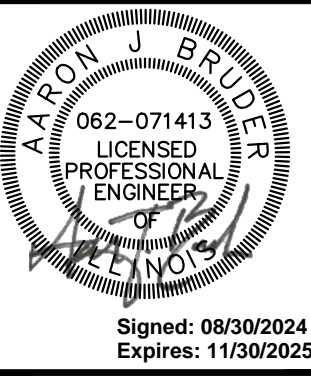
2' CATCH BASIN DETAIL

Scale: NOT TO SCALE

STORM CATCH BASIN DETAIL

Scale: NOT TO SCALE

2200 CABOT DRIVE
SUITE 325
LISLE, IL 60532
P. 630.598.0007
WWW.CAGECIVIL.COM



Signed: 08/30/2024
Expires: 11/30/2025

REVISIONS

THIS DESIGN AND THESE DRAWINGS ARE THE PROPERTY OF CAGE ENGINEERING, INC. NO PART OF THIS WORK MAY BE REPRODUCED WITHOUT PRIOR WRITTEN PERMISSION FROM CAGE ENGINEERING, INC.

RS DEVELOPERS, LLC
SCHAUMBURG TOWNHOME DEVELOPMENT
818-860 ROSELLE ROAD
SCHAUMBURG, IL

PROJ NO: 240062

ENG: AJB

DATE: 08/30/2024

SHEET TITLE

CONSTRUCTION DETAILS

SHEET NUMBER

C6.2

23 OF 31