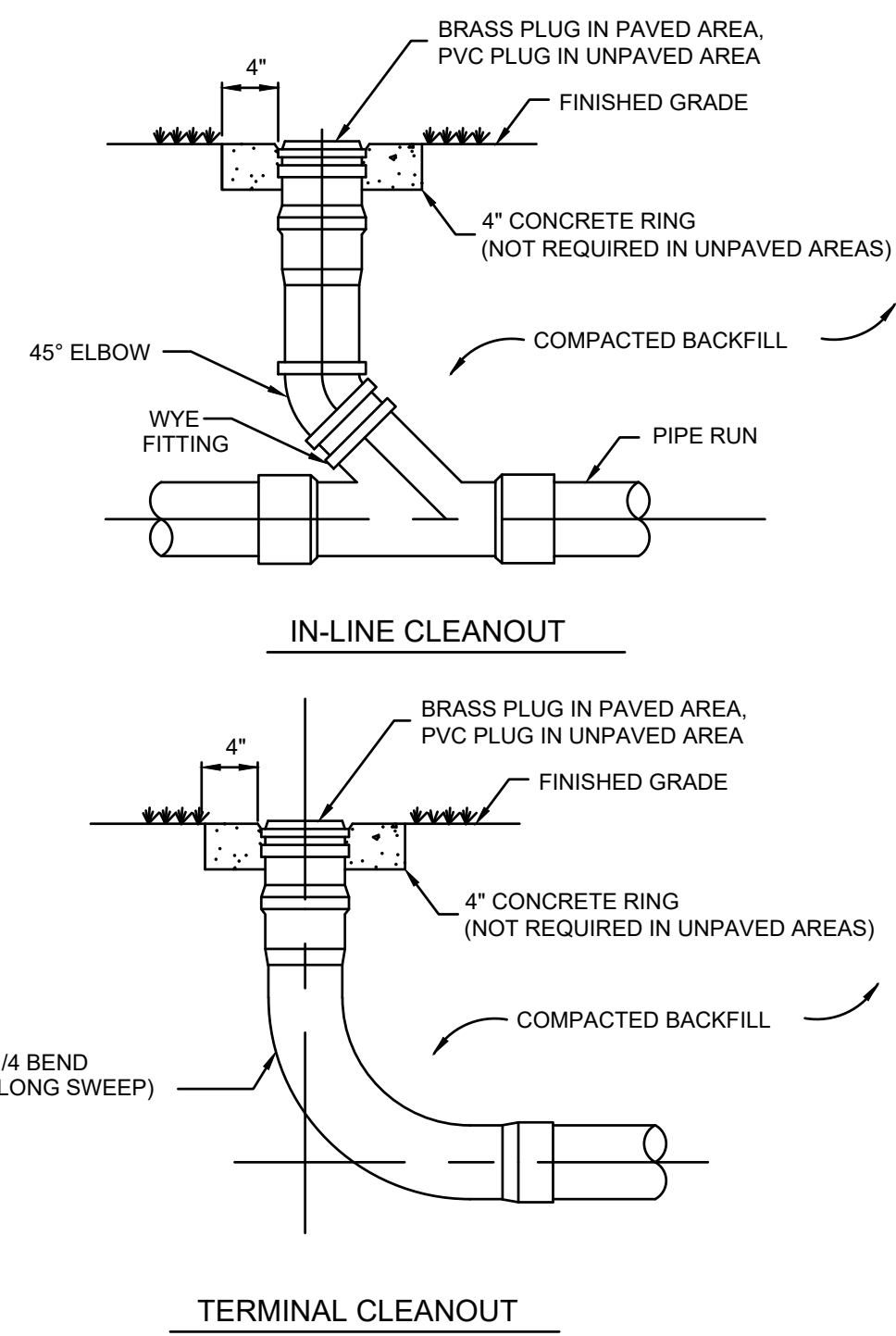
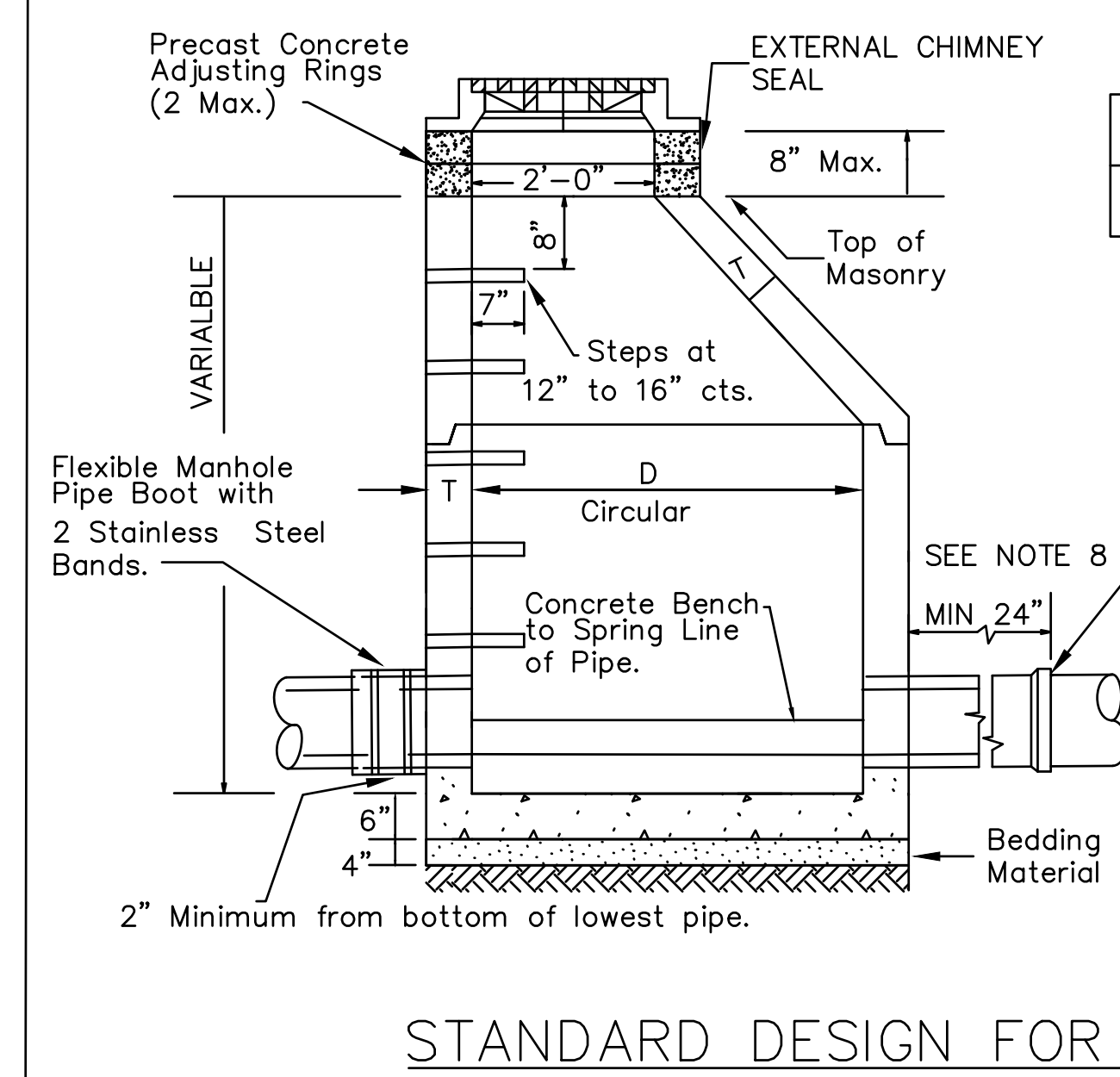


**UNDERGROUND DETENTION SETBACK DETAIL**  
Scale: NOT TO SCALE



**CLEANOUT DETAIL**  
Scale: NOT TO SCALE

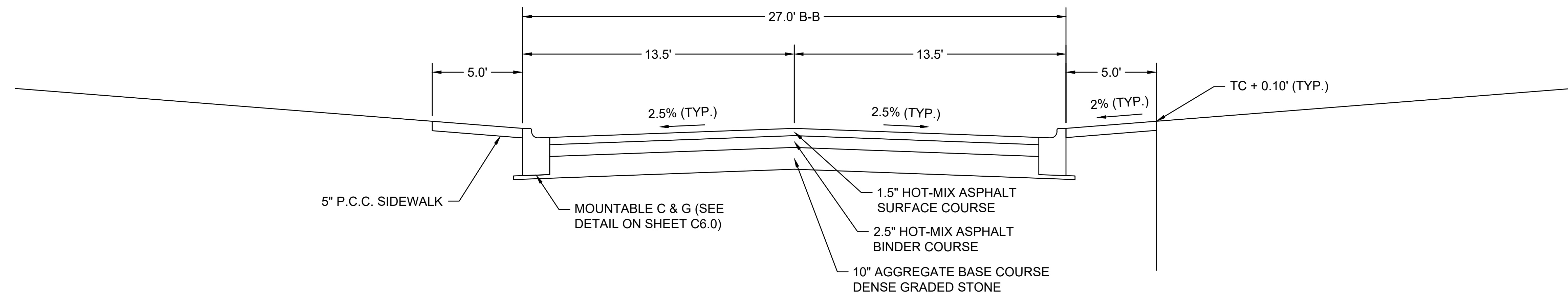


**SANITARY MANHOLE DETAIL**  
Scale: NOT TO SCALE

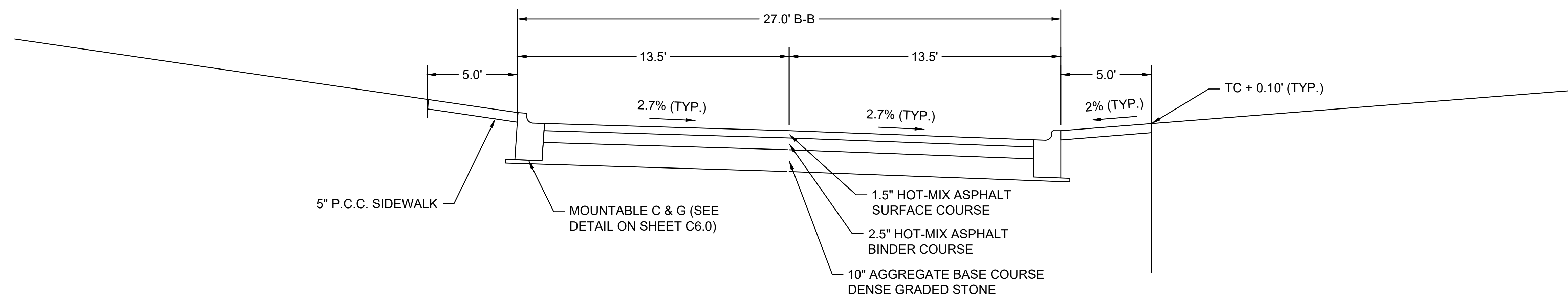
| MATERIAL FOR WALLS                 | D     | T (MAX.) |
|------------------------------------|-------|----------|
| Precast Reinforced Concrete Risers | 4'-0" | 4"       |
|                                    | 5'-0" | 5"       |

- Notes:
1. Frame, Adjusting Rings, & all Manhole Sections to be joined with "E-Z-Stick Materials," ASSHTO M198 Type B, Press Seal Corp., Ft. Wayne, Indiana or approved equal.
  2. Sanitary Manhole lids to be imprinted with "VILLAGE OF SCHAUMBURG" AND "SANITARY".
  3. All Manhole sections shall be precast Reinforced Concrete.
  4. Frame and lid shall be closed as shown in general notes.
  5. All lifting holes shall be sealed with bitumastic material.
  6. Use eccentric cone only.
  7. Bottom section shall be monolithic with precast flexible boots conforming to ASTM 923.
  8. Length of sanitary sewer pipe adjacent to sanitary manhole shall be a minimum of 24 inches in length.
  9. Frames and Lids for manholes within the flood plain shall be water tight, locking lid type.
  10. Sanitary Manholes to include external chimney seals.

**STANDARD DESIGN FOR SANITARY MANHOLE**



**TYPICAL EAST-WEST ROADWAY CROSS SECTION**  
Scale: NOT TO SCALE



**TYPICAL NORTH-SOUTH ROADWAY CROSS SECTION**  
Scale: NOT TO SCALE

2200 CABOT DRIVE  
SUITE 325  
LISLE, IL 60532  
P. 630.598.0007  
WWW.CAGECIVIL.COM

**CAGE**  
CIVIL ENGINEERING

AARON J BRIDER  
062-071413  
LICENSED PROFESSIONAL ENGINEER  
STATE OF ILLINOIS

Signed: 08/30/2024  
Expires: 11/30/2025

REVISIONS

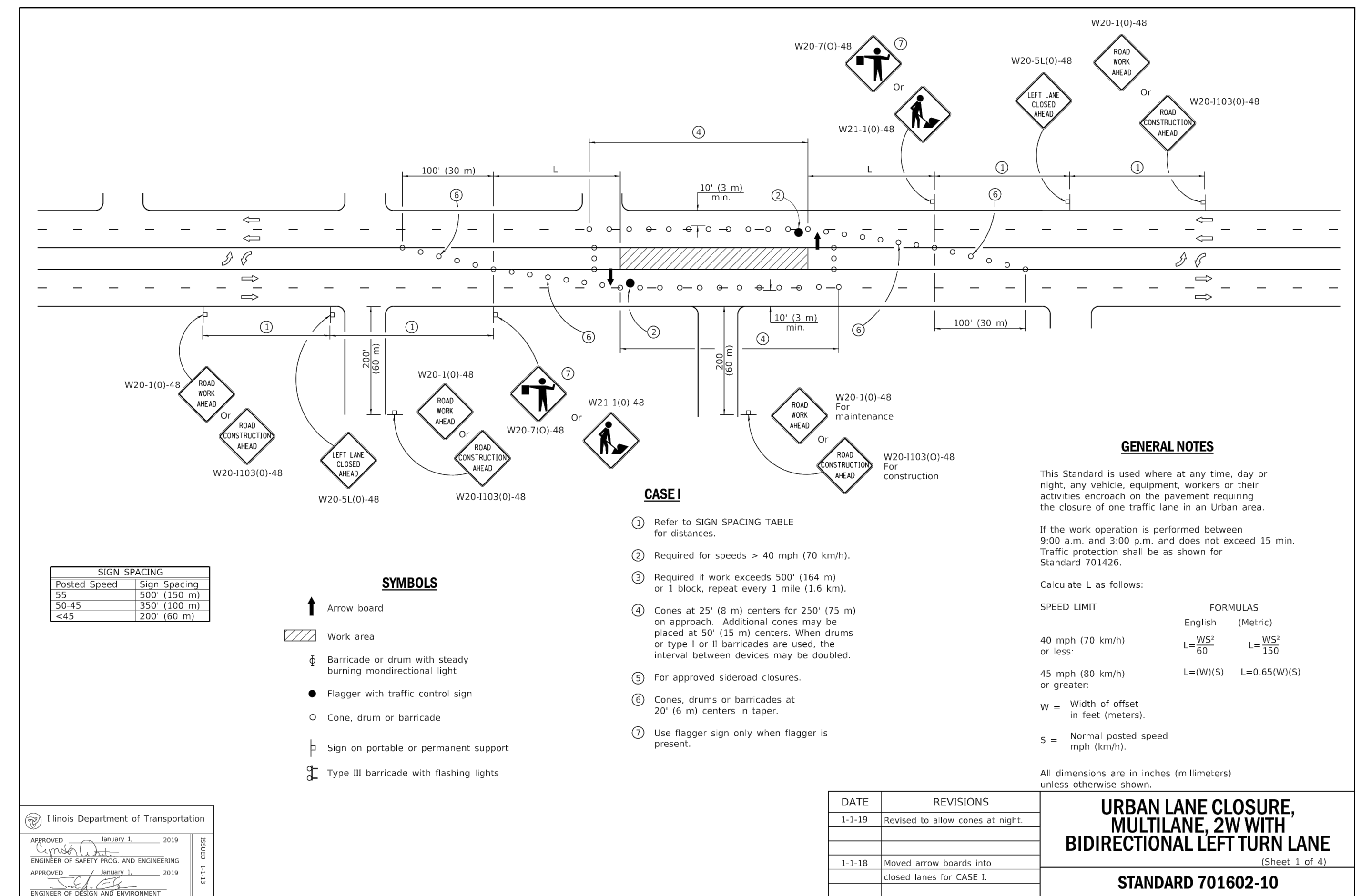
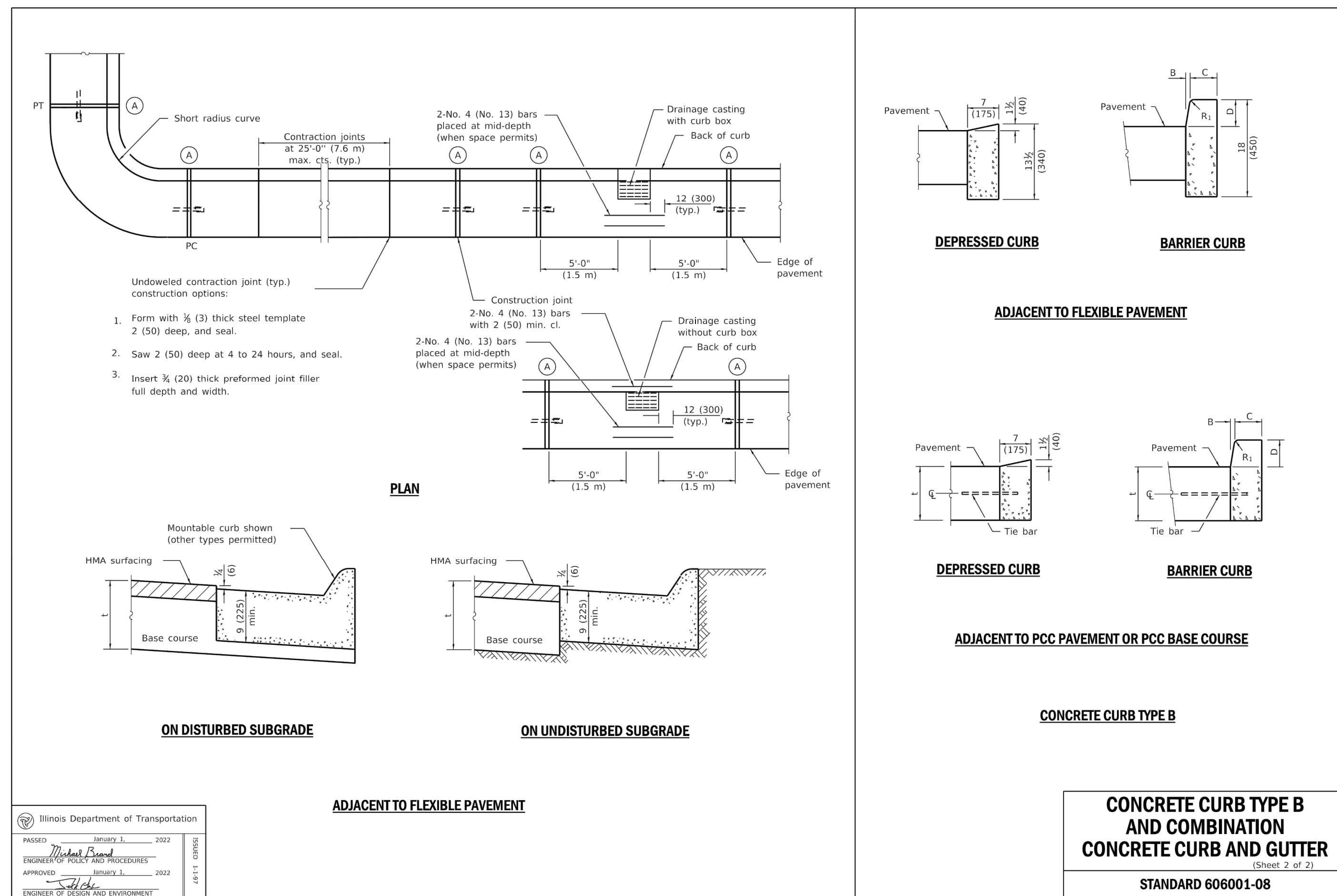
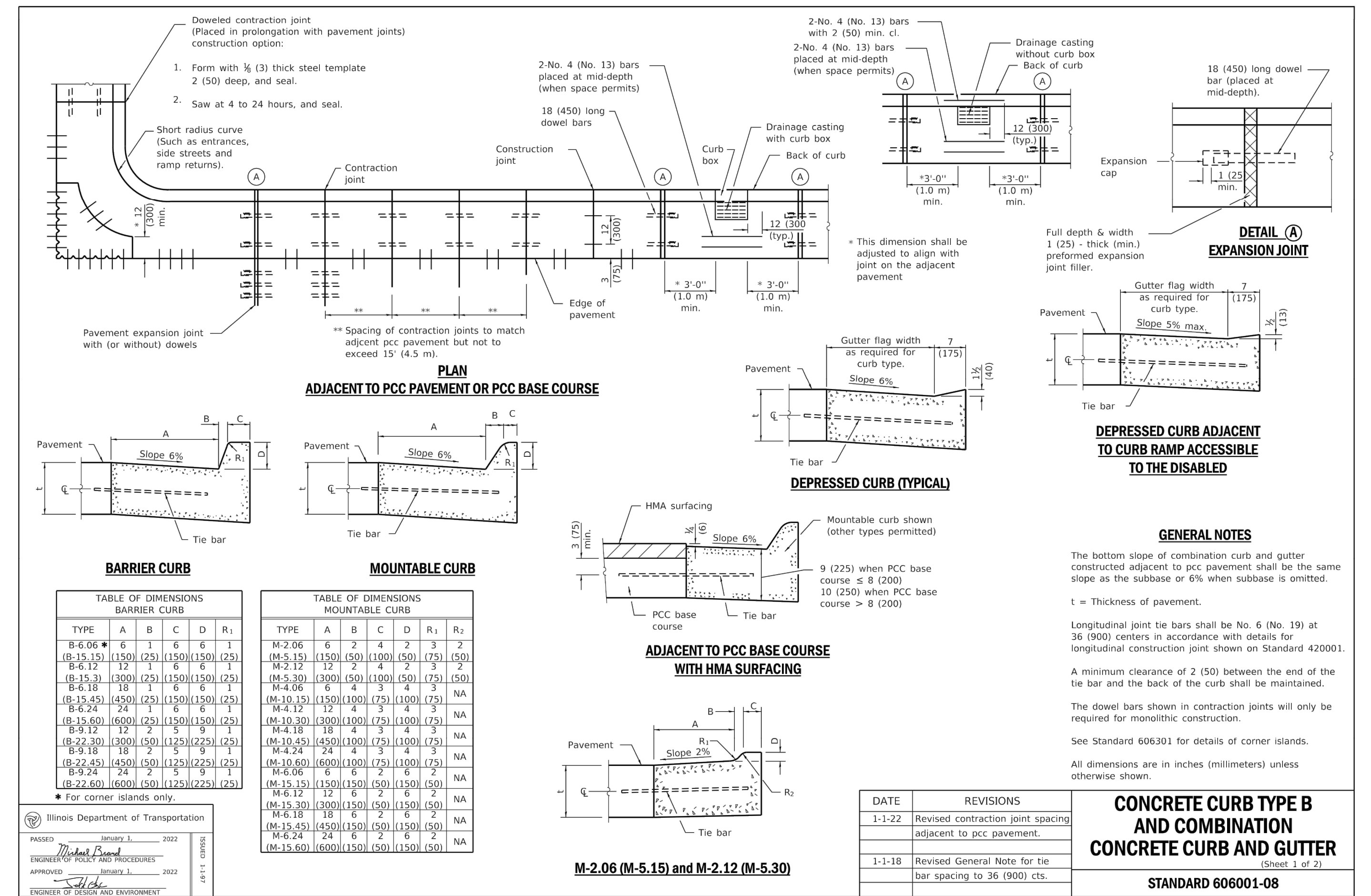
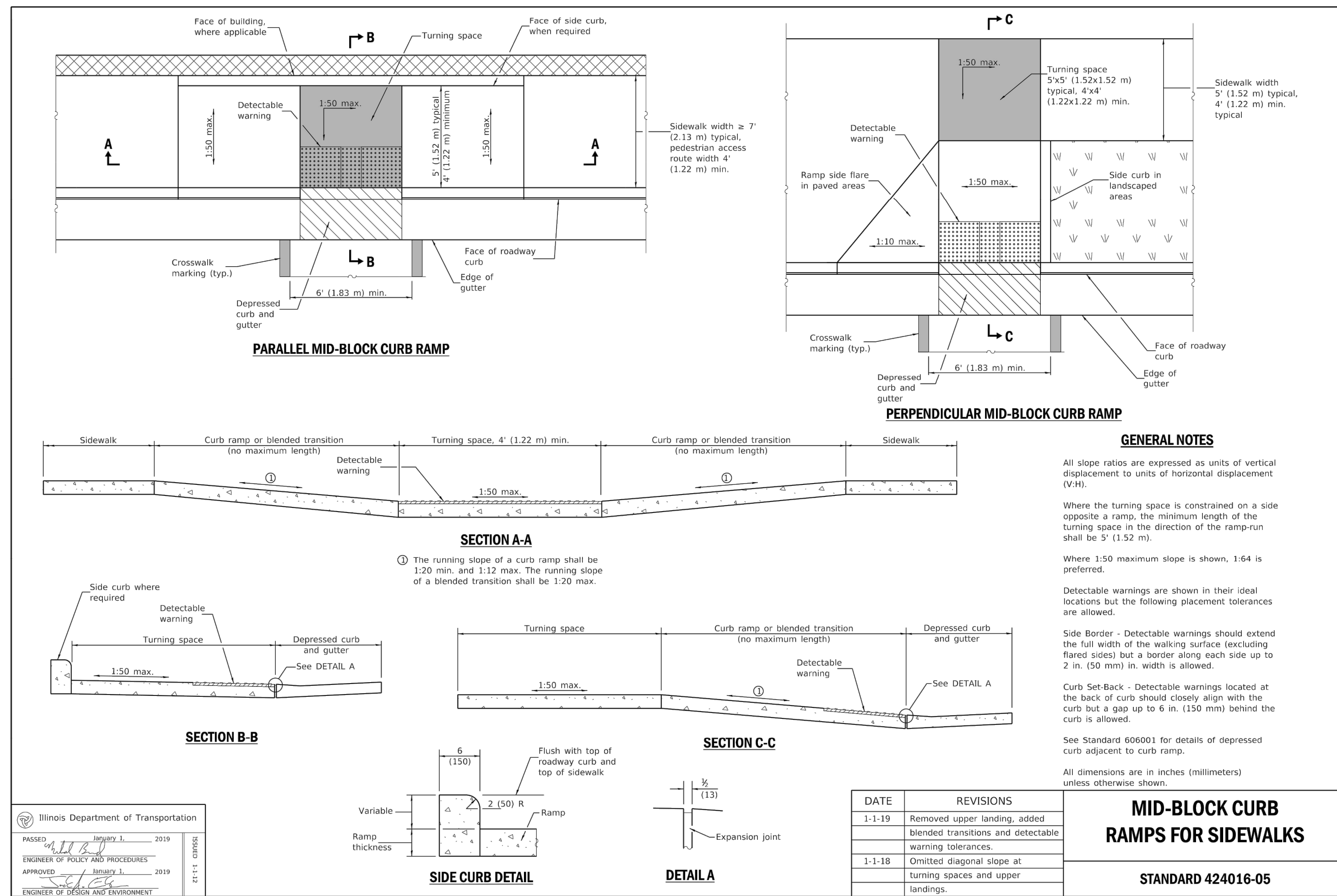
|  |  |
|--|--|
|  |  |
|  |  |
|  |  |
|  |  |
|  |  |

RS DEVELOPERS, LLC  
**SCHAUMBURG TOWNHOME DEVELOPMENT**  
818-860 ROSELLE ROAD  
SCHAUMBURG, IL

PROJ NO: 240062  
ENG: AJB  
DATE: 08/30/2024

SHEET TITLE  
**CONSTRUCTION DETAILS**

SHEET NUMBER  
**C6.3**  
24 OF 31



2200 CABOT DRIVE  
SUITE 325  
LISLE, IL 60532  
P. 630.598.0007  
WWW.CAGECIVIL.COM

**CAGE CIVIL ENGINEERING**

AARON J. BRIDER  
062-071413  
LICENSED PROFESSIONAL ENGINEER  
Signed: 08/30/2024  
Expires: 11/30/2025

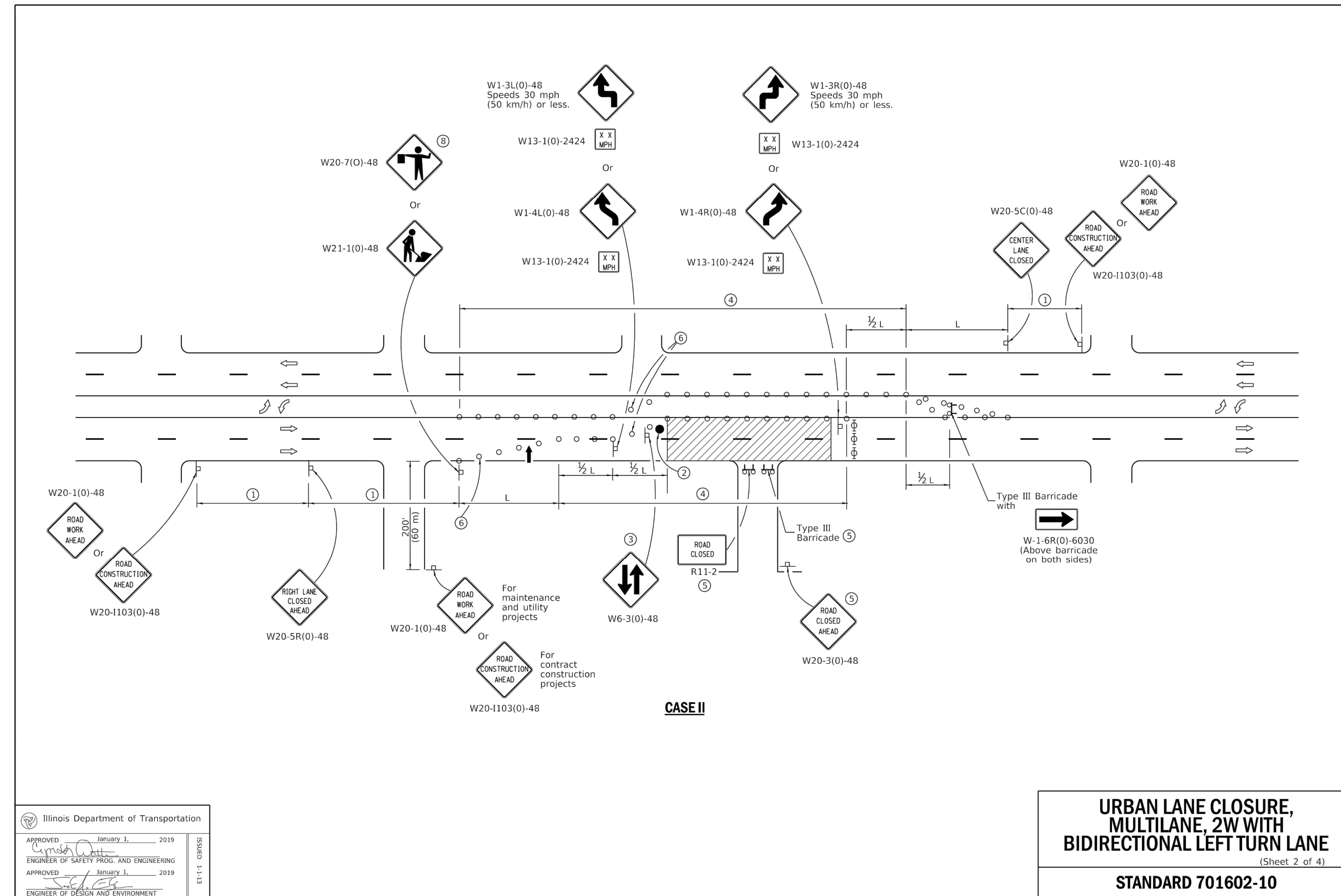
REVISIONS

RS DEVELOPERS, LLC  
SCHAUMBURG TOWNHOME DEVELOPMENT  
818-860 ROSELLE ROAD  
SCHAUMBURG, IL

PROJ NO: 240062  
ENG: AJB  
DATE: 08/30/2024

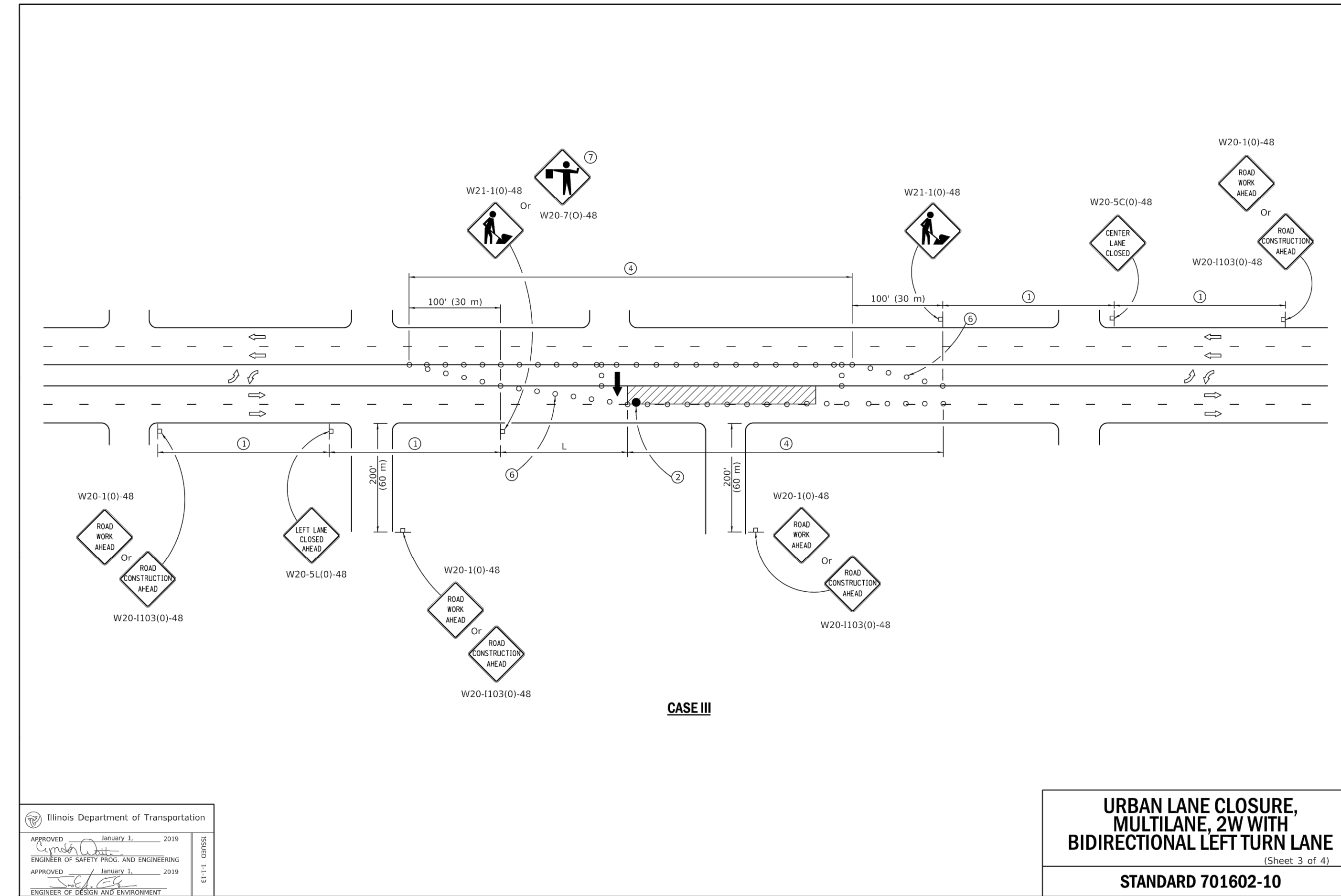
SHEET TITLE  
CONSTRUCTION DETAILS

SHEET NUMBER  
C6.4  
25 OF 31



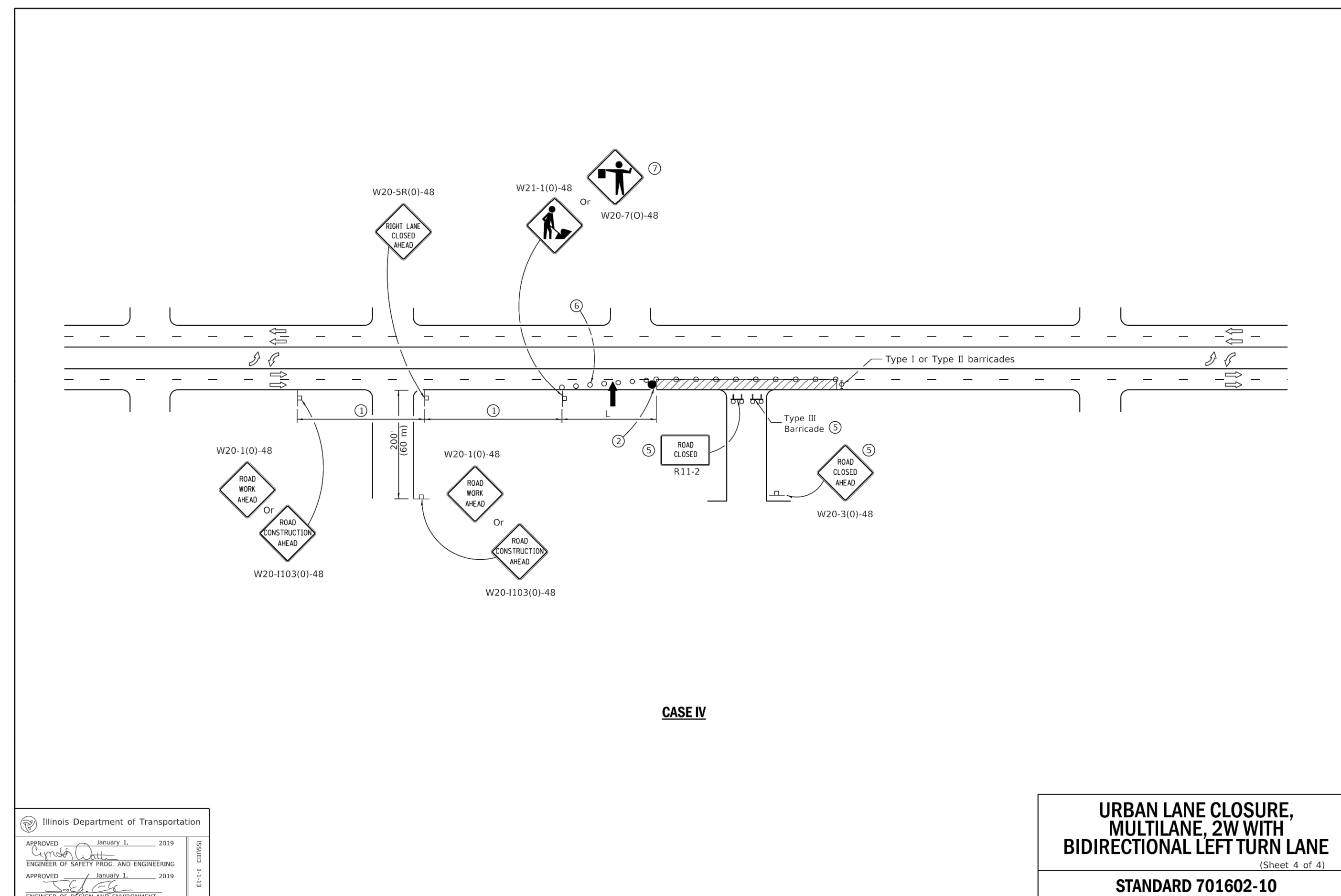
Illinois Department of Transportation  
 APPROVED January 3, 2019  
 ENGINEER OF SAFETY PROGRAM AND ENGINEERING  
 APPROVED January 3, 2019  
 ENGINEER OF DESIGN AND ENVIRONMENT

**URBAN LANE CLOSURE,  
 MULTILANE, 2W WITH  
 BIDIRECTIONAL LEFT TURN LANE**  
 (Sheet 2 of 4)  
**STANDARD 701602-10**



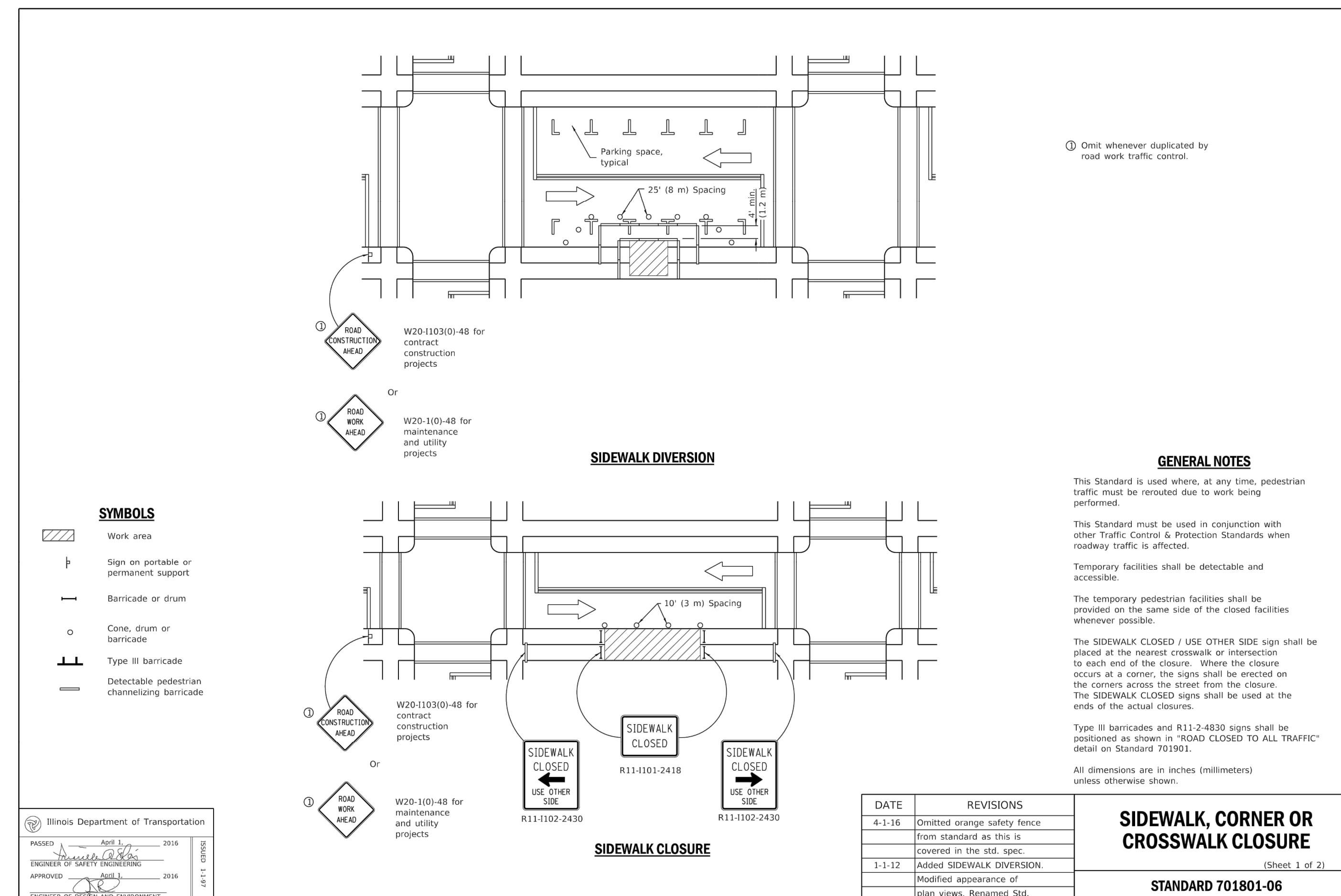
Illinois Department of Transportation  
 APPROVED January 3, 2019  
 ENGINEER OF SAFETY PROGRAM AND ENGINEERING  
 APPROVED January 3, 2019  
 ENGINEER OF DESIGN AND ENVIRONMENT

**URBAN LANE CLOSURE,  
 MULTILANE, 2W WITH  
 BIDIRECTIONAL LEFT TURN LANE**  
 (Sheet 3 of 4)  
**STANDARD 701602-10**



Illinois Department of Transportation  
 APPROVED January 3, 2019  
 ENGINEER OF SAFETY PROGRAM AND ENGINEERING  
 APPROVED January 3, 2019  
 ENGINEER OF DESIGN AND ENVIRONMENT

**URBAN LANE CLOSURE,  
 MULTILANE, 2W WITH  
 BIDIRECTIONAL LEFT TURN LANE**  
 (Sheet 4 of 4)  
**STANDARD 701602-10**



Illinois Department of Transportation  
 PASSED August 1, 2016  
 ENGINEER OF SAFETY PROGRAM AND ENGINEERING  
 APPROVED August 1, 2016  
 ENGINEER OF DESIGN AND ENVIRONMENT

2200 CABOT DRIVE  
 SUITE 325  
 LISLE, IL 60532  
 P. 630.598.0007  
 WWW.CAGECIVIL.COM

**CAGE**  
 CIVIL ENGINEERING

AARON J. BRIDER  
 LICENSED PROFESSIONAL ENGINEER  
 State of Illinois  
 No. 062-071413  
 Signed: 08/30/2024  
 Expires: 11/30/2025

REVISIONS

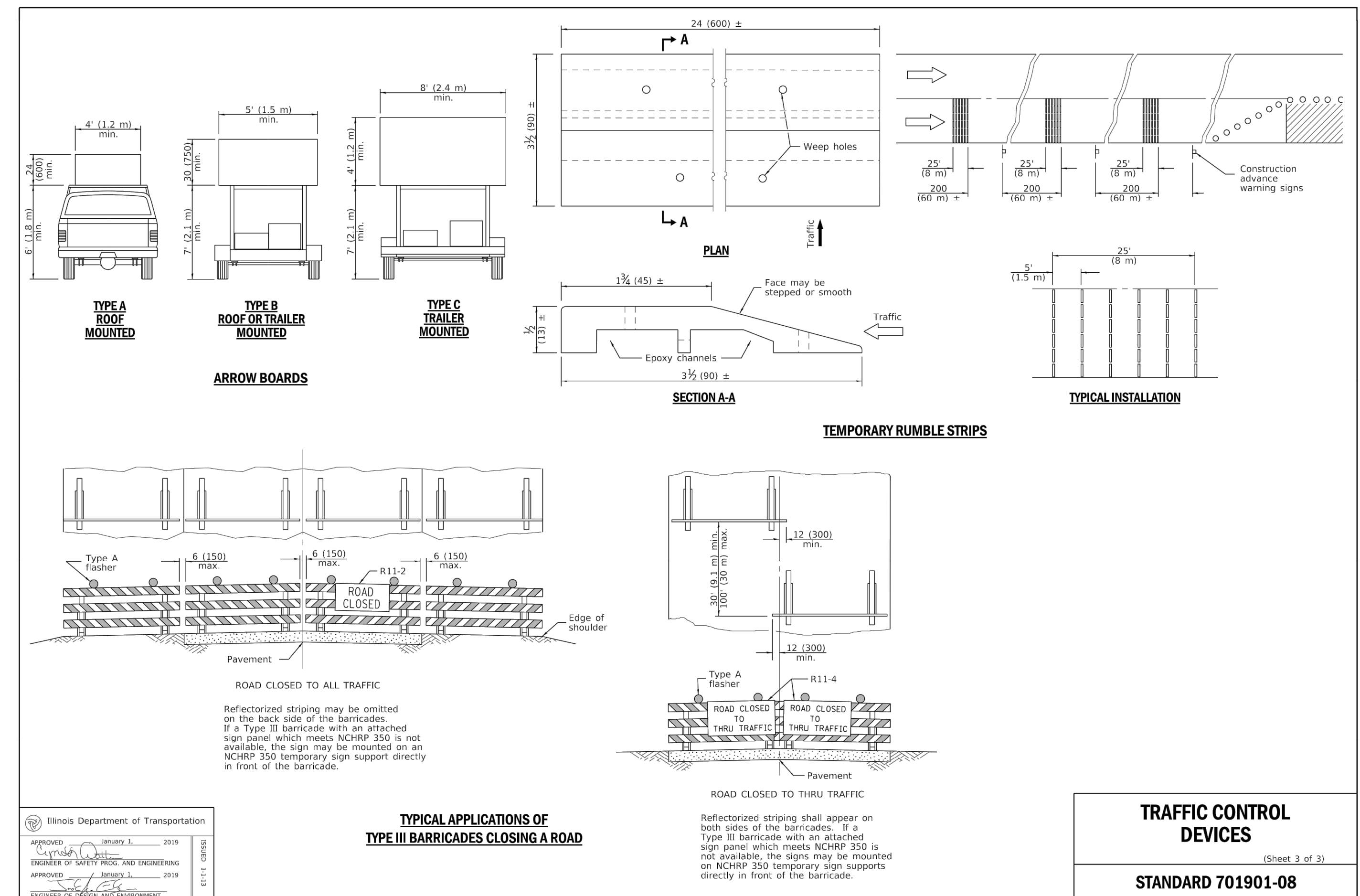
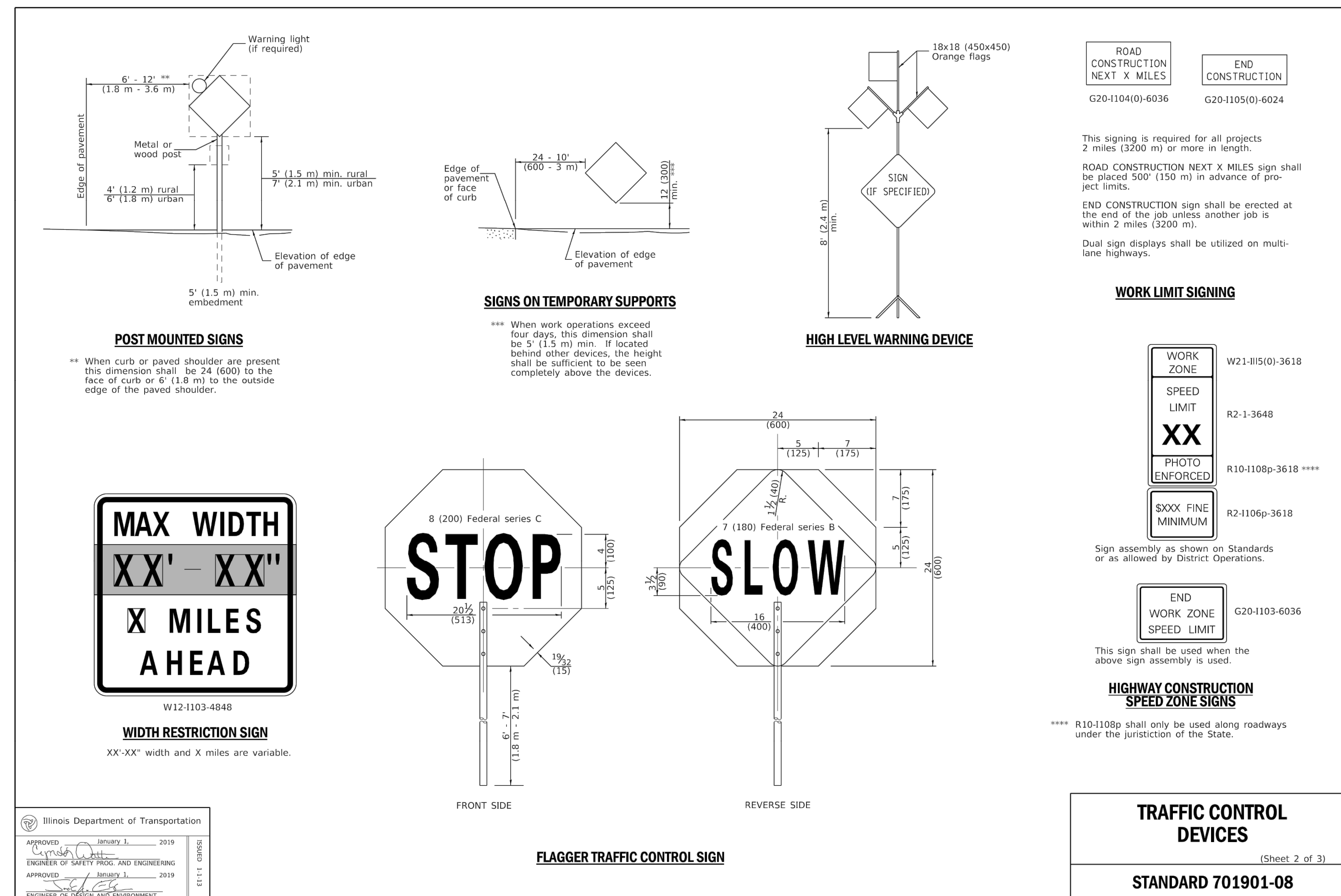
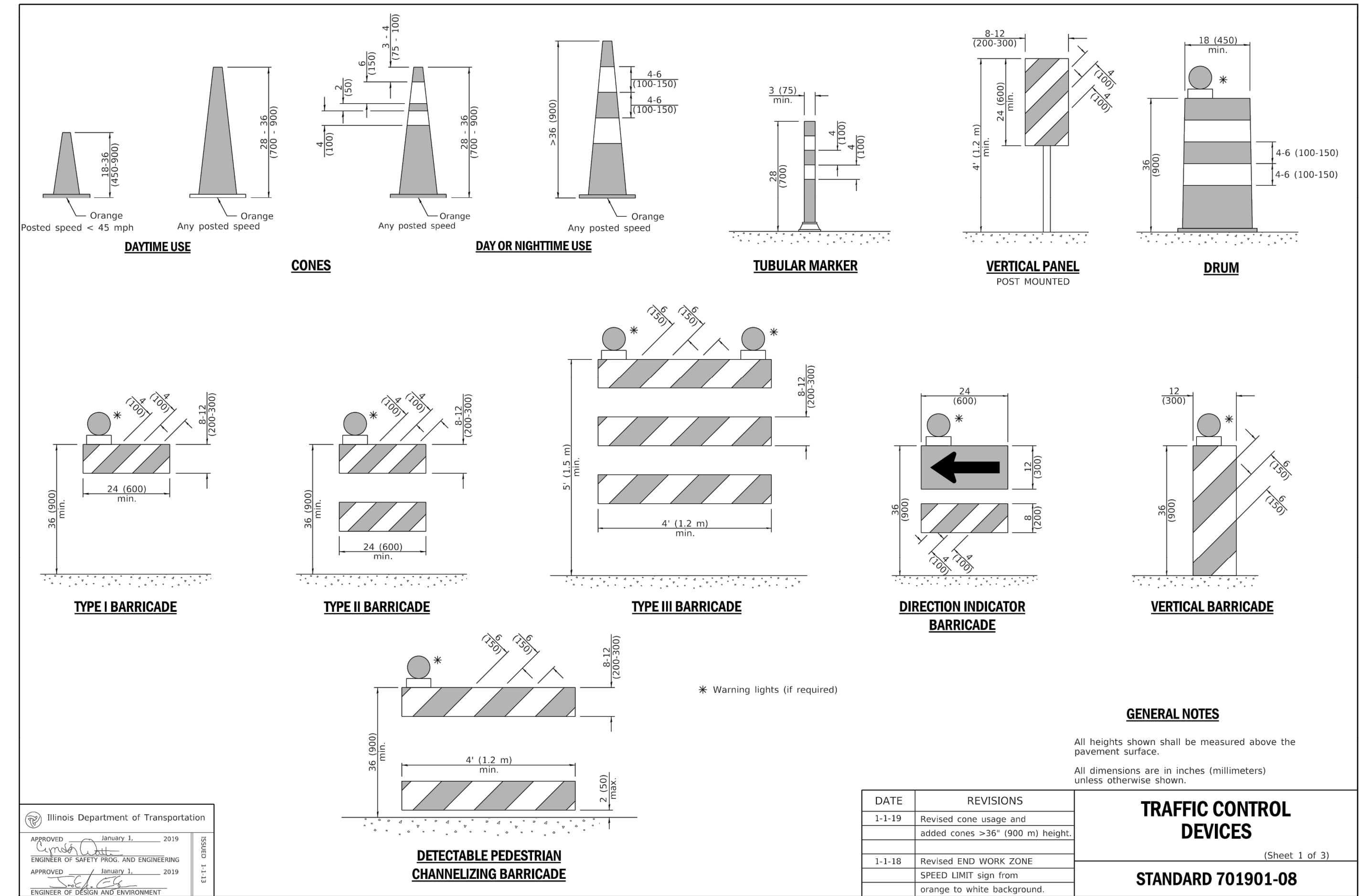
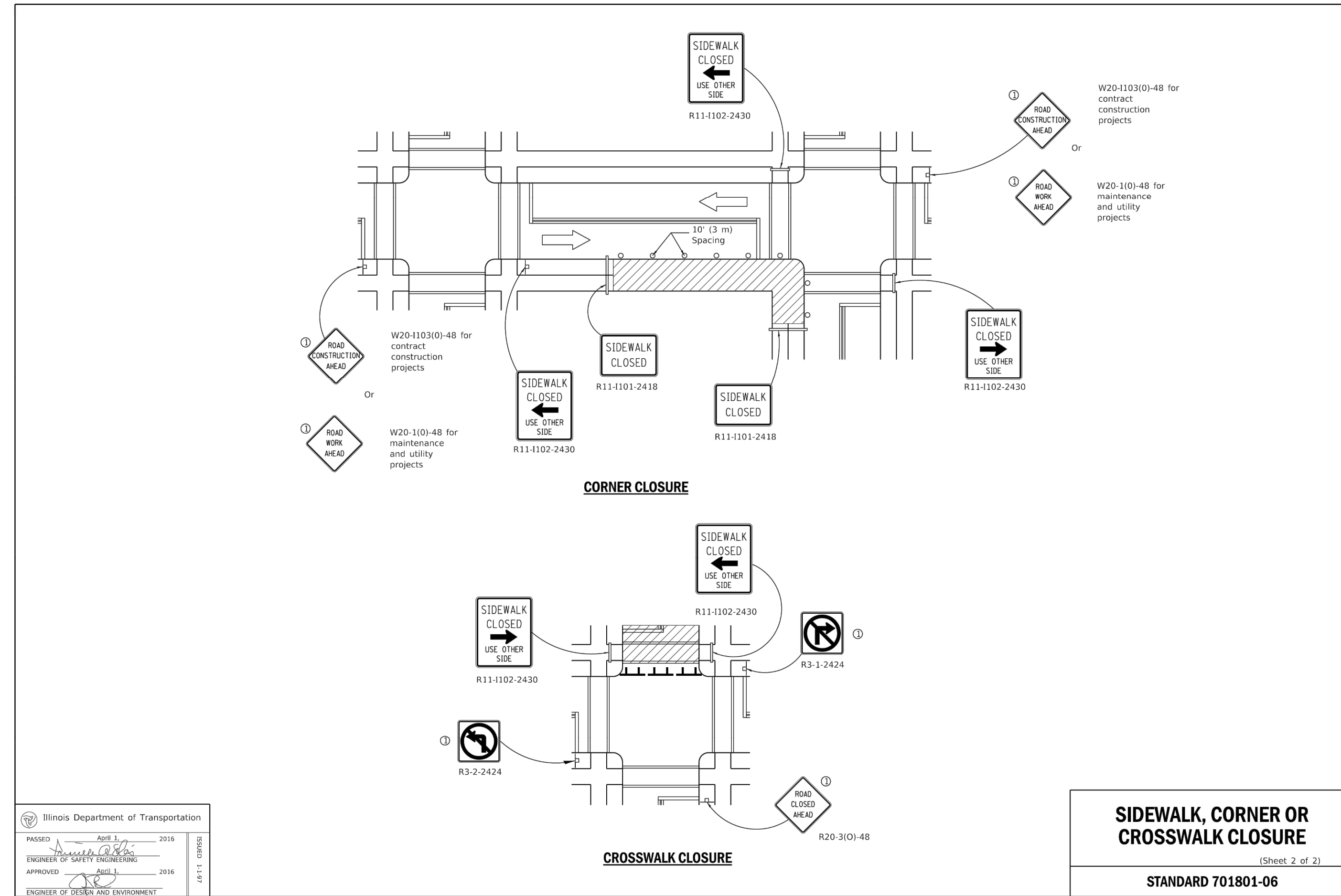
THIS DESIGN AND THESE DRAWINGS ARE THE PROPERTY OF CAGE ENGINEERING, INC. NO PART OF THIS WORK MAY BE REPRODUCED WITHOUT PRIOR WRITTEN PERMISSION FROM CAGE ENGINEERING, INC.

RS DEVELOPERS, LLC  
**SCHAUMBURG TOWNHOME DEVELOPMENT**  
 818-860 ROSELLE ROAD  
 SCHAUMBURG, IL

PROJ NO: 240062  
 ENG: AJB  
 DATE: 08/30/2024

SHEET TITLE  
**CONSTRUCTION DETAILS**

SHEET NUMBER  
**C6.5**  
 26 OF 31



2200 CABOT DRIVE  
 SUITE 325  
 LISLE, IL 60532  
 P. 630.598.0007  
 WWW.CAGECIVIL.COM

**CAGE CIVIL ENGINEERING**

AARON J. BRIDER  
 LICENSED PROFESSIONAL ENGINEER  
 No. 062-071413  
 Signed: 08/30/2024  
 Expires: 11/30/2025

REVISIONS

THIS DESIGN AND THESE DRAWINGS ARE THE PROPERTY OF CAGE ENGINEERING, INC. NO PART OF THIS WORK MAY BE REPRODUCED OR TRANSMITTED IN ANY FORM OR BY ANY MEANS, ELECTRONIC OR MECHANICAL, INCLUDING PHOTOCOPYING, RECORDING, OR BY ANY INFORMATION STORAGE AND RETRIEVAL SYSTEM.

RS DEVELOPERS, LLC  
**SCHAUMBURG TOWNHOME DEVELOPMENT**  
 818-860 ROSELLE ROAD  
 SCHAUMBURG, IL

PROJ NO: 240062  
 ENG: AJB  
 DATE: 08/30/2024

SHEET TITLE  
**CONSTRUCTION DETAILS**

SHEET NUMBER  
**C6.6**  
 27 OF 31