

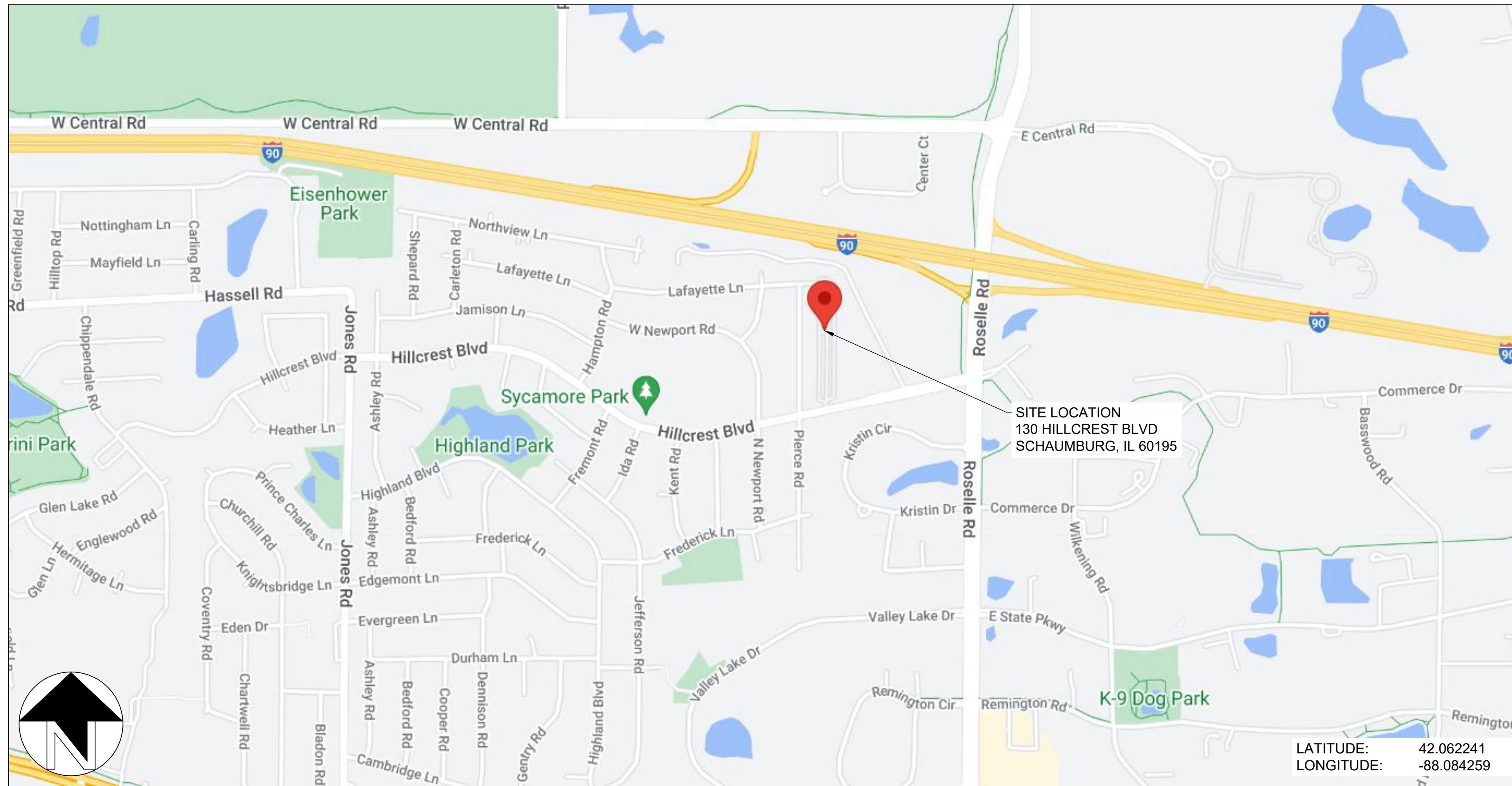
PUBLIC STORAGE #08224 -130 HILLCREST

130 HILLCREST BLVD, SCHAUMBURG, IL 60195

ROOFTOP PV SYSTEM - ISSUED FOR PERMIT

DRAWING INDEX

- G01 - TITLE SHEET
- G10 - OVERALL SITE PLAN
- G20 - ARRAY PLAN
- G21 - ARRAY DIMENSIONS
- G22 - ARRAY DIMENSIONS
- G23 - BUILDING ELEVATIONS
- G30 - FIRE ACCESS PLAN
- E01 - ELECTRICAL NOTES
- E10 - ELECTRICAL SITE PLAN
- E11 - EQUIPMENT PLANS / ELEVATION
- E20 - DC STRINGING PLAN
- E30 - LINE DIAGRAM
- E31 - AC & DC CALCULATIONS
- E32 - AC & DC CALCULATIONS
- E33 - AC & DC CALCULATIONS
- E40 - ELECTRICAL DETAILS
- E50 - LABELING
- E60 - GROUNDING DETAILS
- E70 - EQUIPMENT SPECS
- E71 - EQUIPMENT SPECS



LATITUDE: 42.062241
LONGITUDE: -88.084259

DEVELOPER INFORMATION	
DEVELOPER	SOLAR LANDSCAPE
ADDRESS	601 BANGS AVE, UNIT 3
MUNICIPALITY	ASBURY PARK, NJ 07712
PHONE	919-633-4256
EMAIL	permits@solarlandscape.com

SYSTEM CHARACTERISTICS	
DC SIZE (KW DC)	774.88
AC SIZE (KW AC)	500.00
DC/AC RATIO	1.55

MODULE INFORMATION	
MANUFACTURER	JINKO
MODEL NUMBER(S)	JKM580N-72HL4-BDV
PMAX @ STC (W)	580
ISC (A)	14.37
IMP (A)	13.62
VOC (V)	51.47
VMP (V)	42.59
TEMP COEFF OF VOC (%/°C)	-0.25
TEMP COEFF OF PMAX (%/°C)	-0.29
VOC @ MIN TEMP.	58.84
VMP @ MAX TEMP.	37.65
NUMBER OF MODULES	1336

INVERTER INFORMATION	
MANUFACTURER	SOLAREEDGE
MODEL NUMBER(S)	SE100K-USx8xxxx (480V)
MAXIMUM DC INPUT VOLTAGE (V)	1000
MAXIMUM DC INPUT POWER (W)	175000
NOMINAL AC OUTPUT VOLTAGE (V)	480
MPPT OPERATING VOLTAGE RANGE (V)	SEE OPTIMIZER SPECS
NOMINAL AC POWER (W)	100000
MAX CONTINUOUS OUTPUT CURRENT (A)	120
NUMBER OF INVERTERS	5

OPTIMIZER INFORMATION	
MANUFACTURER	SOLAREEDGE
MODEL NUMBER(S)	S1201
MODULES PER OPTIMIZER	2
MAXIMUM SYSTEM VOLTAGE (V)	1000
RATED DC INPUT POWER (W)	1200
MAX CONTINUOUS OUTPUT CURRENT (A)	18
MPPT VOLTAGE RANGE	12.5 - 125
NUMBER OF OPTIMIZERS	678

PROJECT NOTES:

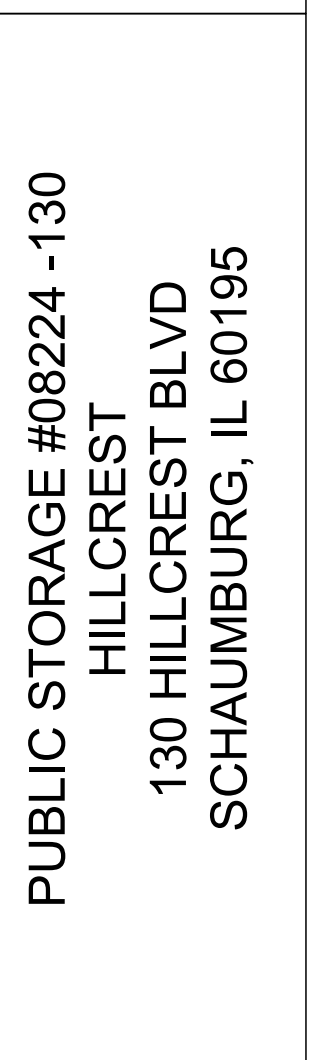
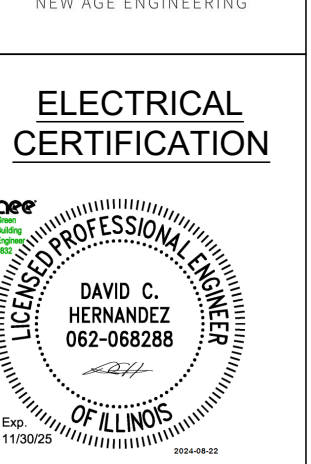
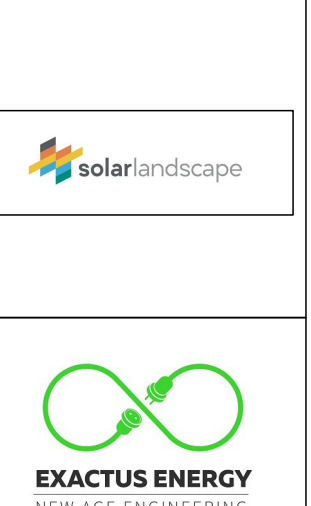
1. CONSULT SOLAR LANDSCAPE BEFORE DEVIATING FROM THIS DRAWING PACKAGE.
2. PROJECT TYPE: COMMUNITY SOLAR
3. UTILITY COMPANY: COMED
4. INTERCONNECTION VOLTAGE: 12470V DELTA
5. AHJ: SCHAUMBURG VILLAGE

COMMERCIAL CONSTRUCTION DESIGN PARAMETERS	
HIGH TEMPERATURE:	30.1°C
LOW TEMPERATURE:	-31.8°C

APPLICABLE CODES	
NATIONAL ELECTRICAL CODE - NFPA 70 2020 (NEC)	
STANDARD FOR ELECTRICAL SAFETY IN THE WORKFORCE - NFPA 70E 2018	
INTERNATIONAL ELECTRICAL TESTING ASSOCIATION - ANSI/NETA STANDARD	
UL 1703 - SOLAR MODULES	
UL 1741 - INVERTERS, COMBINER BOXES (UL1741SB WHERE APPLICABLE)	
UL 2703 - RACKING RAILS, MOUNTS AND CLAMPS FOR PV MODULES	
2021 INTERNATIONAL BUILDING CODE (IBC)	
2021 INTERNATIONAL EXISTING BUILDING CODE (IEBC)	
2021 INTERNATIONAL FIRE CODE (IFC)	

FOR OFFICIAL USE ONLY:

	EXISTING BUILDING	PROPOSED ALTER
IBC OCCUPANCY CLASSIFICATION	STORAGE S2	STORAGE S2
NFPA 101 CLASSIFICATION	STORAGE	STORAGE
TYPE OF CONSTRUCTION	TYPE 1 & 2	TYPE 1 & 2
NUMBER OF STORIES ABOVE GRADE	1	1
HIGH RISE (Y / N)	N	N
COVERED MALL (Y / N)	N	N
FULLY SPRINKLERED (Y / N)	N	N
FIRE ALARM (Y / N)	Y	Y
FLOOR AREA OF RENOVATION	NA	ROOFTOP SOLAR - 63,695 SQ. FT.



PUBLIC STORAGE #08224 -130
HILLCREST
130 HILLCREST BLVD
SCHAMBURG, IL 60195

DRAWN BY
WD

CHECKED BY
PB

DATE
22-Aug-2024

DRAWING LEVEL
ISSUED FOR PERMIT

REV.	A	B	C	D	E
DATE					

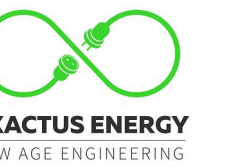
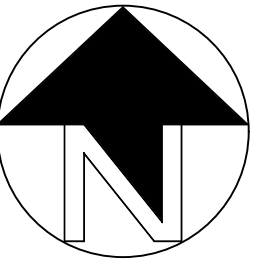
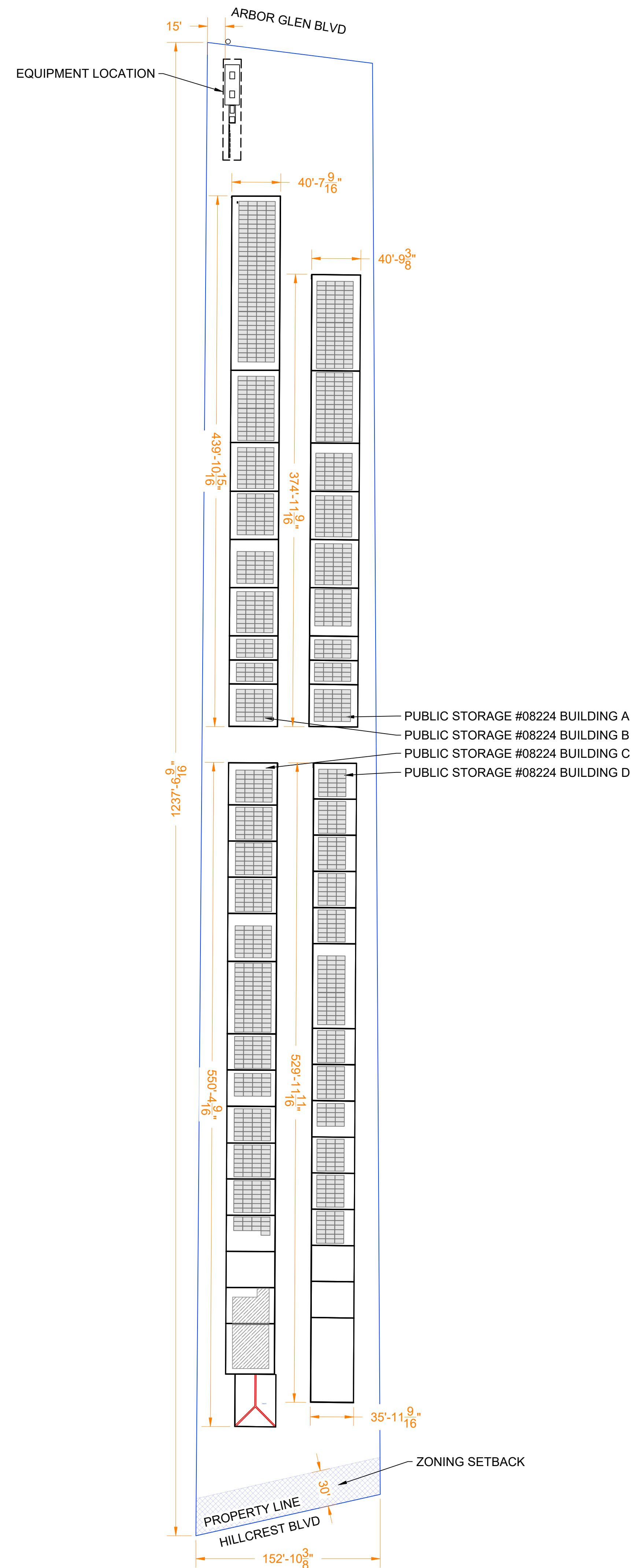
SHEET SIZE
36X24 SHOULD MEASURE 1":

SCALE
NTS

SHEET TITLE
G01
TITLE SHEET

NOTES:

1. ALL DIMENSIONS TO BE FIELD VERIFIED. LOCATIONS SHOWN ARE APPROXIMATE.
2. ALL PV ELECTRICAL EQUIPMENT TO BE INSTALLED AS PER INSTALLATION MANUALS AND NEC REQUIREMENTS.
3. CARE SHALL BE TAKEN TO ENSURE CONDUITS AND RACEWAYS ARE ORIENTED TO MINIMIZE INTERFERENCE WITH FIRE ACCESS WALKWAYS.
4. EXACT LOCATION AND SPACING OF PHOTOVOLTAIC MODULES TO BE ESTABLISHED ACCORDING TO THE FINAL CONFIGURATION DETERMINED BY INSTALLER AND RACKING MANUFACTURER
5. PROPERTY LINE DETERMINED FROM PUBLICLY AVAILABLE GIS DATA.
6. THIS DRAWING PROVIDES AN OVERVIEW ONLY AND AS SUCH SHOULD NOT BE RELIED ON FOR EXACT DIMENSIONS.
7. MODULE LAYOUT IS SUBJECT TO CHANGE BASED ON AVAILABLE STRUCTURAL CAPACITY AND POWER GRID AVAILABILITY.
8. ROOF AND MODULE LAYOUTS ARE BASED ON INFORMATION COLLECTED DURING THE SITE SURVEY. ROOF ALTERATIONS MADE AFTER THE SURVEY DATE WILL NOT BE REFLECTED IN THIS DRAWING.
9. TREES DO NOT SHADE ANY ROOF UNLESS TREE HEIGHT IS SPECIFIED.
10. ALL DIMENSIONS REPRESENT THREE-DIMENSIONAL PATH PROJECTIONS OF WHICH THE ROOF'S PITCH CAN INFLUENCE THE ACCURACY OF THE MEASUREMENTS.



ELECTRICAL CERTIFICATION



PUBLIC STORAGE #08224 -130
 HILLCREST
 130 HILLCREST BLVD
 SCHAUMBURG, IL 60195

DRAWN BY
 WD

CHECKED BY
 PB

DATE
 22-Aug-2024

DRAWING LEVEL
 ISSUED FOR PERMIT

DRAWING LEVEL

DATE

REV.

A B C D E

SHEET SIZE
 36X24 SHOULD MEASURE 1":

SCALE
 1:700

SHEET TITLE
G10
 OVERALL SITE PLAN

NOTES:

- ALL DIMENSIONS TO BE FIELD VERIFIED. LOCATIONS SHOWN ARE APPROXIMATE.
- ALL PV ELECTRICAL EQUIPMENT TO BE INSTALLED AS PER INSTALLATION MANUALS AND NEC REQUIREMENTS.
- CARE SHALL BE TAKEN TO ENSURE CONDUITS AND RACEWAYS ARE ORIENTED TO MINIMIZE INTERFERENCE WITH FIRE ACCESS WALKWAYS.
- EXACT LOCATION AND SPACING OF PHOTOVOLTAIC MODULES TO BE ESTABLISHED ACCORDING TO THE FINAL CONFIGURATION DETERMINED BY INSTALLER AND RACKING MANUFACTURER
- PROPERTY LINE DETERMINED FROM PUBLICLY AVAILABLE GIS DATA.
- THIS DRAWING PROVIDES AN OVERVIEW ONLY AND AS SUCH SHOULD NOT BE RELIED ON FOR EXACT DIMENSIONS.
- MODULE LAYOUT IS SUBJECT TO CHANGE BASED ON AVAILABLE STRUCTURAL CAPACITY AND POWER GRID AVAILABILITY.
- ROOF AND MODULE LAYOUTS ARE BASED ON INFORMATION COLLECTED DURING THE SITE SURVEY. ROOF ALTERATIONS MADE AFTER THE SURVEY DATE WILL NOT BE REFLECTED IN THIS DRAWING.
- TREES DO NOT SHADE ANY ROOF UNLESS TREE HEIGHT IS SPECIFIED.
- ALL DIMENSIONS REPRESENT THREE-DIMENSIONAL PATH PROJECTIONS OF WHICH THE ROOF'S PITCH CAN INFLUENCE THE ACCURACY OF THE MEASUREMENTS.

LEGEND

	DRAIN		ACCESS
	VENT		ELECTRICAL
	GAS		ROOF SEAM
	RTU		SATELLITE
	BOX		SKYLIGHT
	SHADOW		SUPPORT
	TREE		UNSURVEYED
	RIDGE		FIRE ACCESS PATH
	STRUCTURAL KEEPOUT		

PROJECT DETAILS

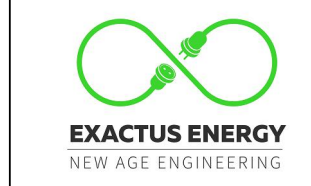
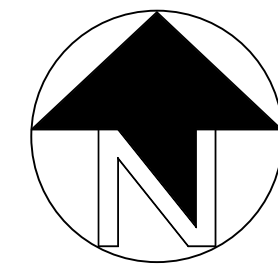
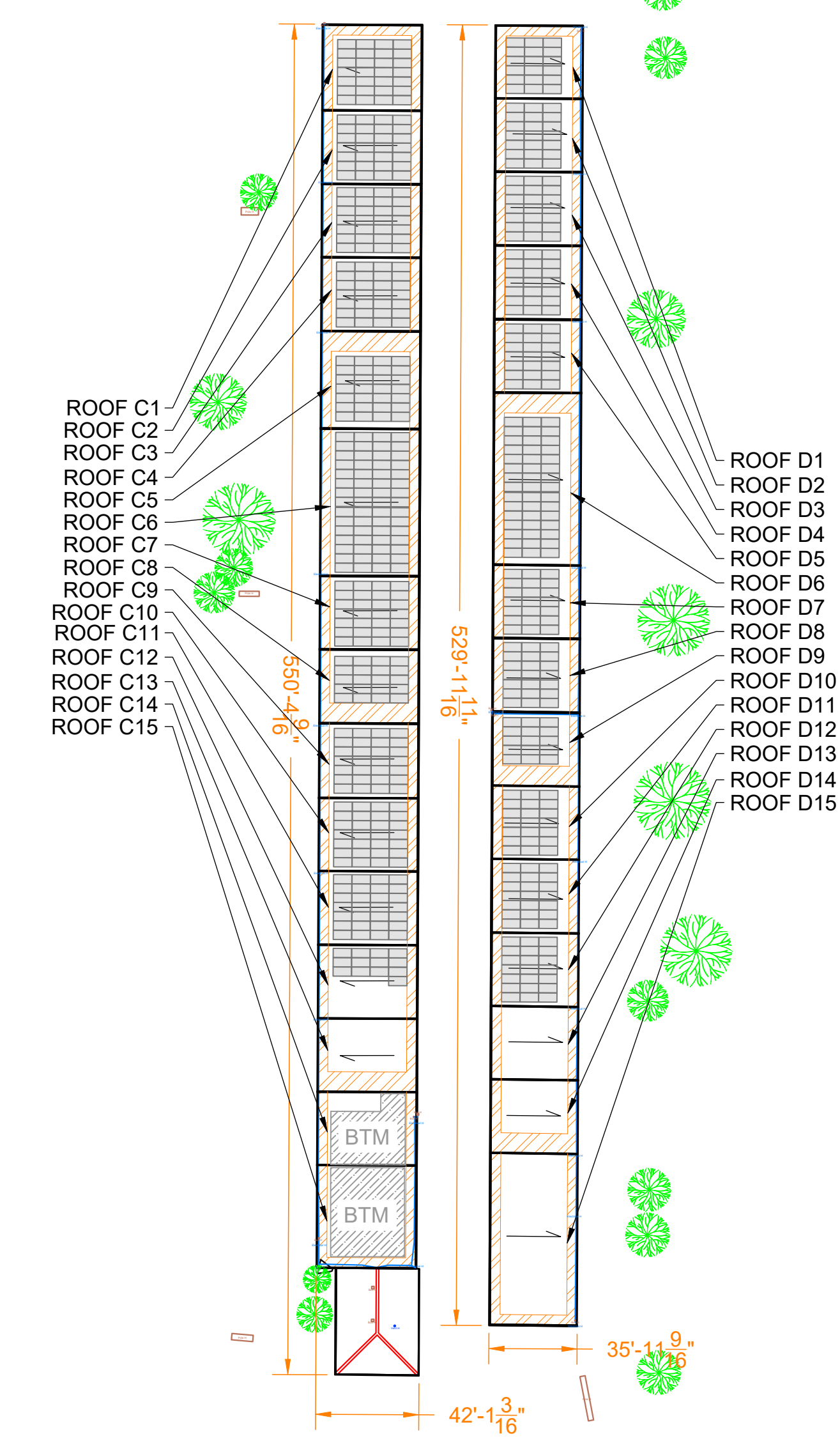
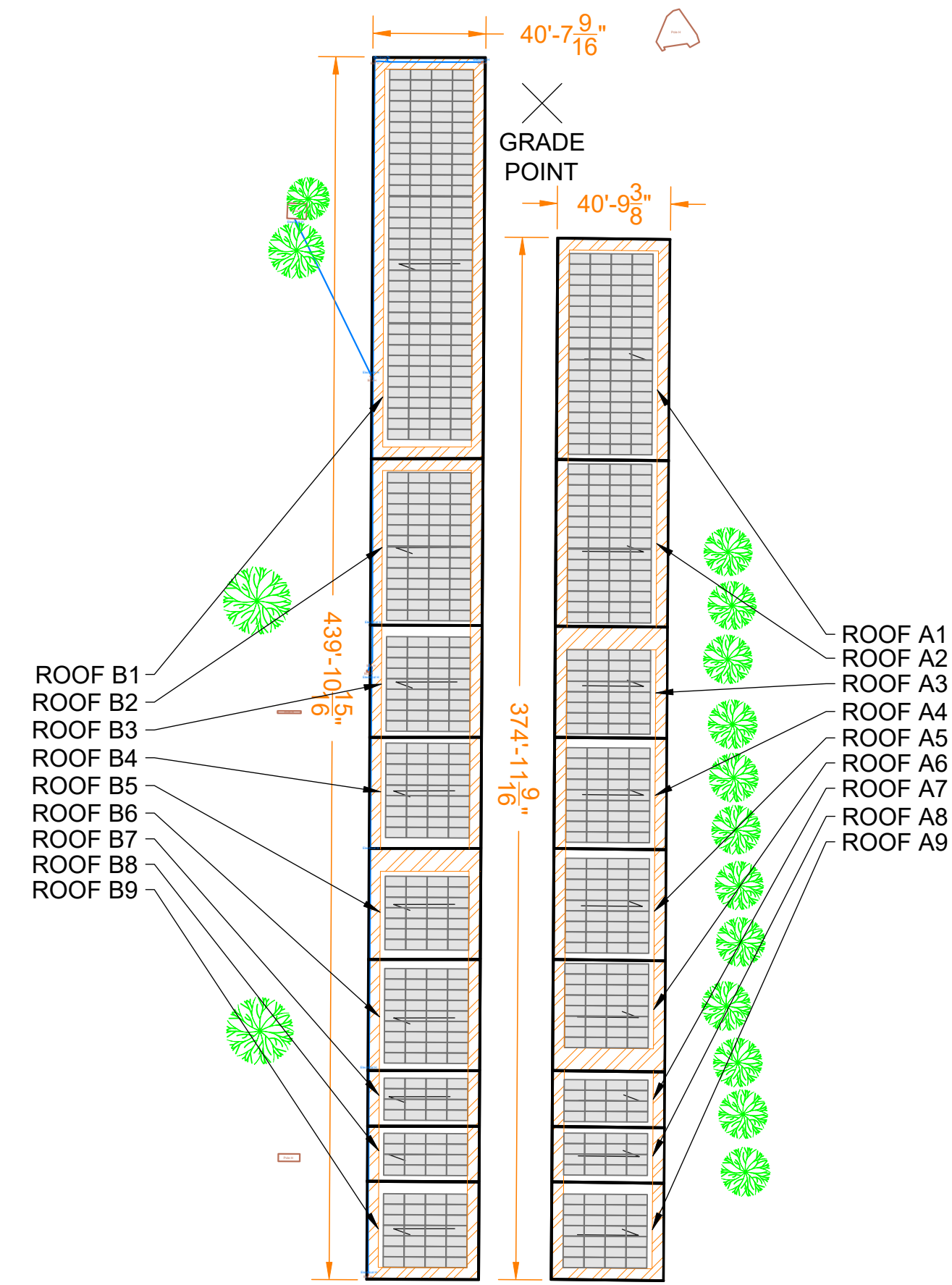
SYSTEM SIZE	774.88 KW DC
NUMBER OF MODULES	1336
MODULE MODEL	JINKO SOLAR-EAGLE 72 G6B JKM580N-72HL4-BDV-580W
MODULE SIZE	89.69" X 44.65"
SITE SURVEY DATE	-

ROOF DETAILS

ROOF #	PITCH	ARRAY AZIMUTH	MODULE TILT	MODULE COUNT	MATERIAL	HEIGHT ABOVE GRADE
A1	2°	91°	FLUSH MOUNT	76	METAL	11'-0"
A2	2°	91°	FLUSH MOUNT	60	METAL	11'-0"
A3	2°	91°	FLUSH MOUNT	32	METAL	11'-0"
A4	2°	91°	FLUSH MOUNT	36	METAL	11'-0"
A5	2°	91°	FLUSH MOUNT	36	METAL	11'-0"
A6	2°	91°	FLUSH MOUNT	32	METAL	11'-0"
A7	2°	91°	FLUSH MOUNT	16	METAL	11'-0"
A8	2°	91°	FLUSH MOUNT	16	METAL	11'-0"
A9	2°	91°	FLUSH MOUNT	28	METAL	11'-0"
B1	2°	270°	FLUSH MOUNT	140	METAL	11'-0"
B2	2°	270°	FLUSH MOUNT	56	METAL	11'-0"
B3	2°	270°	FLUSH MOUNT	36	METAL	11'-0"
B4	2°	270°	FLUSH MOUNT	36	METAL	11'-0"
B5	2°	270°	FLUSH MOUNT	28	METAL	11'-0"
B6	2°	270°	FLUSH MOUNT	36	METAL	11'-0"
B7	2°	270°	FLUSH MOUNT	16	METAL	11'-0"
B8	2°	270°	FLUSH MOUNT	16	METAL	11'-0"
B9	2°	270°	FLUSH MOUNT	28	METAL	11'-0"
C1	1°	270°	FLUSH MOUNT	28	METAL	11'-0"
C2	1°	270°	FLUSH MOUNT	28	METAL	11'-0"

ROOF DETAILS

ROOF #	PITCH	ARRAY AZIMUTH	MODULE TILT	MODULE COUNT	MATERIAL	HEIGHT ABOVE GRADE
C3	1°	270°	FLUSH MOUNT	28	METAL	11'-0"
C4	1°	270°	FLUSH MOUNT	28	METAL	11'-0"
C5	1°	270°	FLUSH MOUNT	28	METAL	11'-0"
C6	1°	270°	FLUSH MOUNT	60	METAL	11'-0"
C7	1°	270°	FLUSH MOUNT	28	METAL	11'-0"
C8	1°	270°	FLUSH MOUNT	20	METAL	11'-0"
C9	1°	270°	FLUSH MOUNT	28	METAL	11'-0"
C10	1°	270°	FLUSH MOUNT	28	METAL	11'-0"
C11	1°	270°	FLUSH MOUNT	28	METAL	11'-0"
C12	1°	270°	FLUSH MOUNT	13	METAL	11'-0"
C13	1°	-	-	-	METAL	11'-0"
C14	1°	-	-	-	METAL	11'-0"
C15	1°	-	-	-	METAL	11'-0"
D1	1°	91°	FLUSH MOUNT	18	METAL	11'-0"
D2	1°	91°	FLUSH MOUNT	21	METAL	11'-0"
D3	1°	91°	FLUSH MOUNT	21	METAL	11'-0"
D4	1°	91°	FLUSH MOUNT	21	METAL	11'-0"
D5	1°	91°	FLUSH MOUNT	21	METAL	11'-0"
D6	1°	91°	FLUSH MOUNT	45	METAL	11'-0"
D7	1°	91°	FLUSH MOUNT	21	METAL	11'-0"
D8	1°	91°	FLUSH MOUNT	21	METAL	11'-0"
D9	1°	91°	FLUSH MOUNT	15	METAL	11'-0"
D10	1°	91°	FLUSH MOUNT	21	METAL	11'-0"
D11	1°	91°	FLUSH MOUNT	21	METAL	11'-0"
D12	1°	91°	FLUSH MOUNT	21	METAL	11'-0"
D13	1°	-	-	-	METAL	11'-0"
D14	1°	-	-	-	METAL	11'-0"
D15	1°	-	-	-	METAL	11'-0"



ELECTRICAL CERTIFICATION



PUBLIC STORAGE #08224 -130
HILLCREST
130 HILLCREST BLVD
SCHAUMBURG, IL 60195

DRAWN BY
WD

CHECKED BY
PB

DATE
22-Aug-2024

DRAWING LEVEL
ISSUED FOR PERMIT

DRAWING LEVEL					
---------------	--	--	--	--	--

DATE					
REV.	A	B	C	D	E

SHEET SIZE
36X24 SHOULD MEASURE 1":

SCALE
1:600

SHEET TITLE

G20

ARRAY PLAN

NOTES:

- ALL DIMENSIONS TO BE FIELD VERIFIED. LOCATIONS SHOWN ARE APPROXIMATE.
- ALL PV ELECTRICAL EQUIPMENT TO BE INSTALLED AS PER INSTALLATION MANUALS AND NEC REQUIREMENTS.
- CARE SHALL BE TAKEN TO ENSURE CONDUITS AND RACEWAYS ARE ORIENTED TO MINIMIZE INTERFERENCE WITH FIRE ACCESS WALKWAYS.
- EXACT LOCATION AND SPACING OF PHOTOVOLTAIC MODULES TO BE ESTABLISHED ACCORDING TO THE FINAL CONFIGURATION DETERMINED BY INSTALLER AND RACKING MANUFACTURER
- PROPERTY LINE DETERMINED FROM PUBLICLY AVAILABLE GIS DATA.
- THIS DRAWING PROVIDES AN OVERVIEW ONLY AND AS SUCH SHOULD NOT BE RELIED ON FOR EXACT DIMENSIONS.
- MODULE LAYOUT IS SUBJECT TO CHANGE BASED ON AVAILABLE STRUCTURAL CAPACITY AND POWER GRID AVAILABILITY.
- ROOF AND MODULE LAYOUTS ARE BASED ON INFORMATION COLLECTED DURING THE SITE SURVEY. ROOF ALTERATIONS MADE AFTER THE SURVEY DATE WILL NOT BE REFLECTED IN THIS DRAWING.
- TREES DO NOT SHADE ANY ROOF UNLESS TREE HEIGHT IS SPECIFIED.
- ALL DIMENSIONS REPRESENT THREE-DIMENSIONAL PATH PROJECTIONS OF WHICH THE ROOF'S PITCH CAN INFLUENCE THE ACCURACY OF THE MEASUREMENTS.

LEGEND

	DRAIN		ACCESS
	VENT		ELECTRICAL
	GAS		ROOF SEAM
	RTU		SATELLITE
	BOX		SKYLIGHT
	SHADOW		SUPPORT
	TREE		UNSURVEYED
	RIDGE		FIRE ACCESS PATH
	STRUCTURAL KEEPOUT		

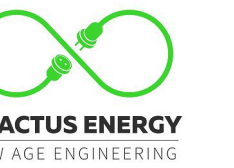
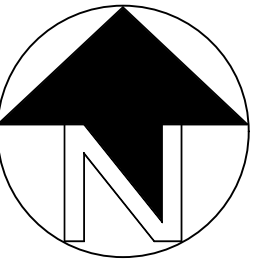
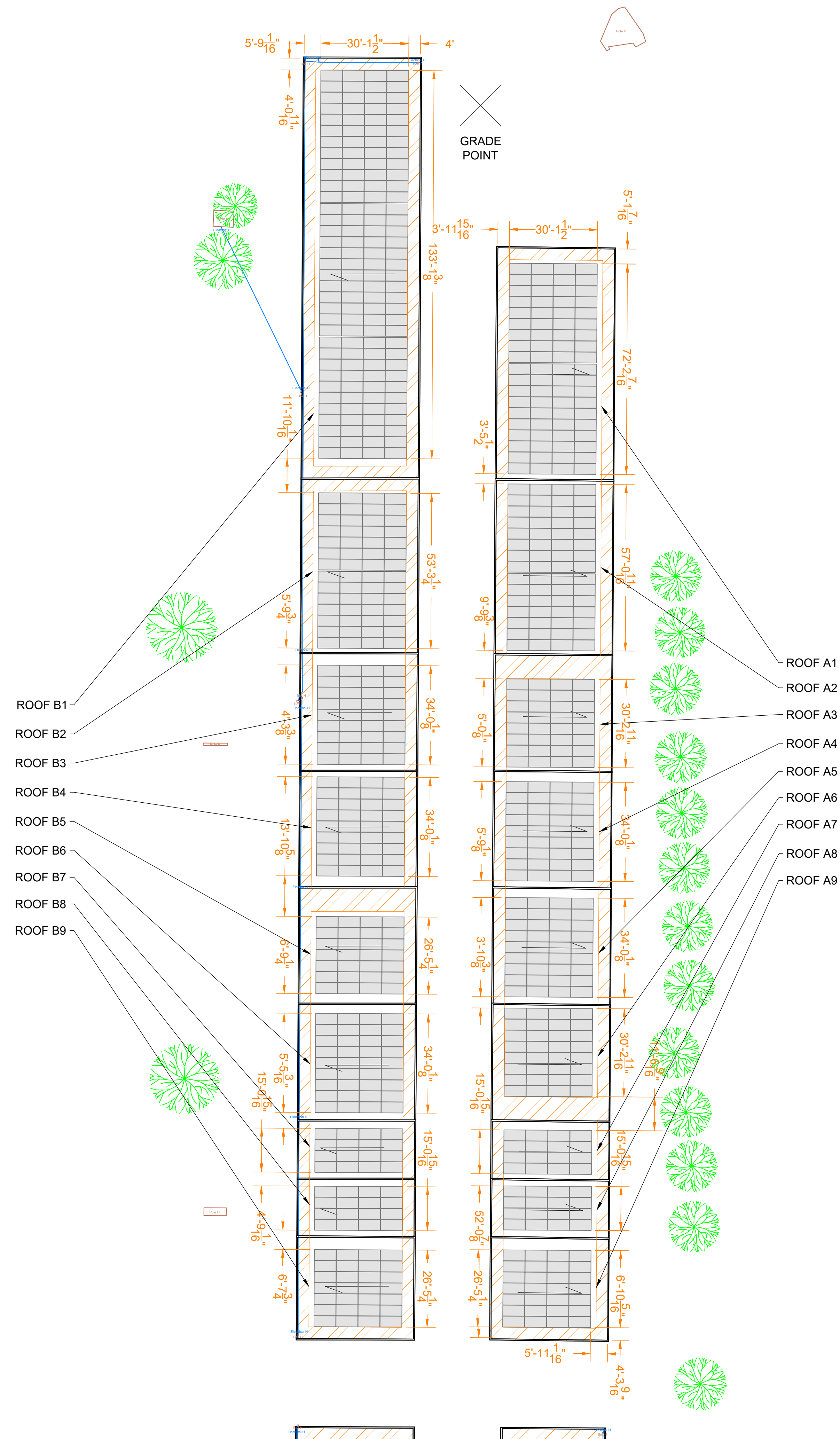
PROJECT DETAILS

SYSTEM SIZE	774.88 KW DC
NUMBER OF MODULES	1336
MODULE MODEL	JINKO SOLAR-EAGLE 72 G6B JKM580N-72HL4-BDV-580W
MODULE SIZE	89.69" X 44.65"
SITE SURVEY DATE	-

ROOF DETAILS

ROOF #	PITCH	ARRAY AZIMUTH	MODULE TILT	MODULE COUNT	MATERIAL	HEIGHT ABOVE GRADE
A1	2°	91°	FLUSH MOUNT	76	METAL	11'-0"
A2	2°	91°	FLUSH MOUNT	60	METAL	11'-0"
A3	2°	91°	FLUSH MOUNT	32	METAL	11'-0"
A4	2°	91°	FLUSH MOUNT	36	METAL	11'-0"
A5	2°	91°	FLUSH MOUNT	36	METAL	11'-0"
A6	2°	91°	FLUSH MOUNT	32	METAL	11'-0"
A7	2°	91°	FLUSH MOUNT	16	METAL	11'-0"
A8	2°	91°	FLUSH MOUNT	16	METAL	11'-0"
A9	2°	91°	FLUSH MOUNT	28	METAL	11'-0"
B1	2°	270°	FLUSH MOUNT	140	METAL	11'-0"
B2	2°	270°	FLUSH MOUNT	56	METAL	11'-0"
B3	2°	270°	FLUSH MOUNT	36	METAL	11'-0"
B4	2°	270°	FLUSH MOUNT	36	METAL	11'-0"
B5	2°	270°	FLUSH MOUNT	28	METAL	11'-0"
B6	2°	270°	FLUSH MOUNT	36	METAL	11'-0"
B7	2°	270°	FLUSH MOUNT	16	METAL	11'-0"
B8	2°	270°	FLUSH MOUNT	16	METAL	11'-0"
B9	2°	270°	FLUSH MOUNT	28	METAL	11'-0"
C1	1°	270°	FLUSH MOUNT	28	METAL	11'-0"
C2	1°	270°	FLUSH MOUNT	28	METAL	11'-0"

ROOF #	PITCH	ARRAY AZIMUTH	MODULE TILT	MODULE COUNT	MATERIAL	HEIGHT ABOVE GRADE
C3	1°	270°	FLUSH MOUNT	28	METAL	11'-0"
C4	1°	270°	FLUSH MOUNT	28	METAL	11'-0"
C5	1°	270°	FLUSH MOUNT	28	METAL	11'-0"
C6	1°	270°	FLUSH MOUNT	60	METAL	11'-0"
C7	1°	270°	FLUSH MOUNT	28	METAL	11'-0"
C8	1°	270°	FLUSH MOUNT	20	METAL	11'-0"
C9	1°	270°	FLUSH MOUNT	28	METAL	11'-0"
C10	1°	270°	FLUSH MOUNT	28	METAL	11'-0"
C11	1°	270°	FLUSH MOUNT	28	METAL	11'-0"
C12	1°	270°	FLUSH MOUNT	13	METAL	11'-0"
C13	1°	-	-	-	METAL	11'-0"
C14	1°	-	-	-	METAL	11'-0"
C15	1°	-	-	-	METAL	11'-0"
D1	1°	91°	FLUSH MOUNT	18	METAL	11'-0"
D2	1°	91°	FLUSH MOUNT	21	METAL	11'-0"
D3	1°	91°	FLUSH MOUNT	21	METAL	11'-0"
D4	1°	91°	FLUSH MOUNT	21	METAL	11'-0"
D5	1°	91°	FLUSH MOUNT	21	METAL	11'-0"
D6	1°	91°	FLUSH MOUNT	45	METAL	11'-0"
D7	1°	91°	FLUSH MOUNT	21	METAL	11'-0"
D8	1°	91°	FLUSH MOUNT	21	METAL	11'-0"
D9	1°	91°	FLUSH MOUNT	15	METAL	11'-0"
D10	1°	91°	FLUSH MOUNT	21	METAL	11'-0"
D11	1°	91°	FLUSH MOUNT	21	METAL	11'-0"
D12	1°	91°	FLUSH MOUNT	21	METAL	11'-0"
D13	1°	-	-	-	METAL	11'-0"
D14	1°	-	-	-	METAL	11'-0"
D15	1°	-	-	-	METAL	11'-0"



ELECTRICAL CERTIFICATION



PUBLIC STORAGE #08224 -130
 HILLCREST
 130 HILLCREST BLVD
 SCHAUMBURG, IL 60195

DRAWN BY
 WD

CHECKED BY
 PB

DATE
 22-Aug-2024

DRAWING LEVEL
 ISSUED FOR PERMIT

DRAWING LEVEL

DATE

REV.

A B C D E

SHEET SIZE
 36X24 SHOULD
 MEASURE 1":

SCALE
 1:275

SHEET TITLE

G21
 ARRAY
 DIMENSIONS

NOTES:

- ALL DIMENSIONS TO BE FIELD VERIFIED. LOCATIONS SHOWN ARE APPROXIMATE.
- ALL PV ELECTRICAL EQUIPMENT TO BE INSTALLED AS PER INSTALLATION MANUALS AND NEC REQUIREMENTS.
- CARE SHALL BE TAKEN TO ENSURE CONDUITS AND RACEWAYS ARE ORIENTED TO MINIMIZE INTERFERENCE WITH FIRE ACCESS WALKWAYS.
- EXACT LOCATION AND SPACING OF PHOTOVOLTAIC MODULES TO BE ESTABLISHED ACCORDING TO THE FINAL CONFIGURATION DETERMINED BY INSTALLER AND RACKING MANUFACTURER
- PROPERTY LINE DETERMINED FROM PUBLICLY AVAILABLE GIS DATA.
- THIS DRAWING PROVIDES AN OVERVIEW ONLY AND AS SUCH SHOULD NOT BE RELIED ON FOR EXACT DIMENSIONS.
- MODULE LAYOUT IS SUBJECT TO CHANGE BASED ON AVAILABLE STRUCTURAL CAPACITY AND POWER GRID AVAILABILITY.
- ROOF AND MODULE LAYOUTS ARE BASED ON INFORMATION COLLECTED DURING THE SITE SURVEY. ROOF ALTERATIONS MADE AFTER THE SURVEY DATE WILL NOT BE REFLECTED IN THIS DRAWING.
- TREES DO NOT SHADE ANY ROOF UNLESS TREE HEIGHT IS SPECIFIED.
- ALL DIMENSIONS REPRESENT THREE-DIMENSIONAL PATH PROJECTIONS OF WHICH THE ROOF'S PITCH CAN INFLUENCE THE ACCURACY OF THE MEASUREMENTS.

LEGEND

	DRAIN		ACCESS
	VENT		ELECTRICAL
	GAS		ROOF SEAM
	RTU		SATELLITE
	BOX		SKYLIGHT
	SHADOW		SUPPORT
	TREE		UNSURVEYED
	RIDGE		FIRE ACCESS PATH
	STRUCTURAL KEEPOUT		

PROJECT DETAILS

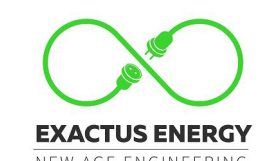
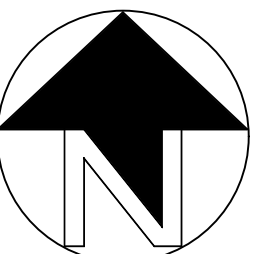
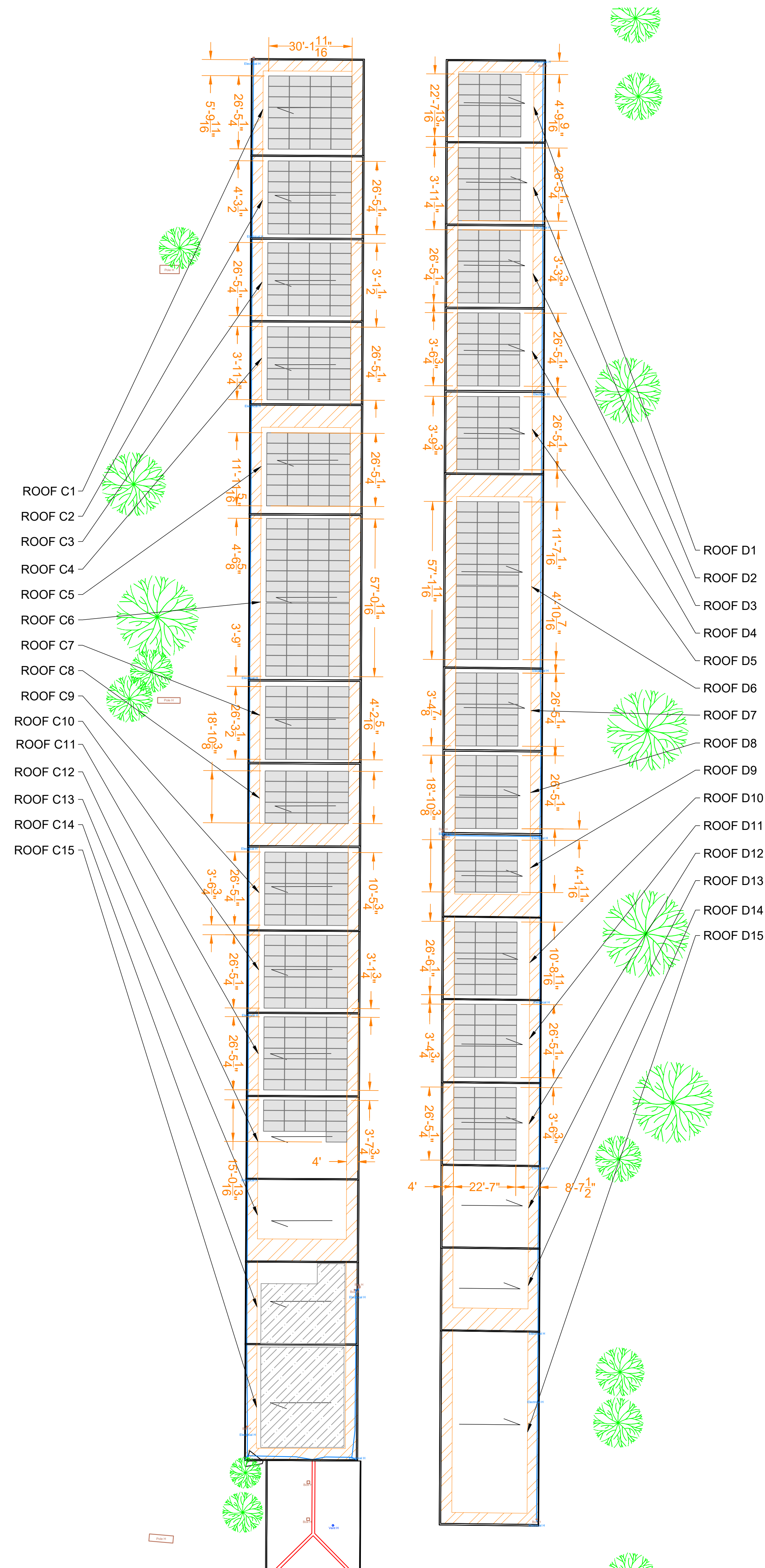
SYSTEM SIZE	774.88 KW DC
NUMBER OF MODULES	1336
MODULE MODEL	JINKO SOLAR-EAGLE 72 G6B JKM580N-72HL4-BDV-580W
MODULE SIZE	89.69" X 44.65"
SITE SURVEY DATE	-

ROOF DETAILS

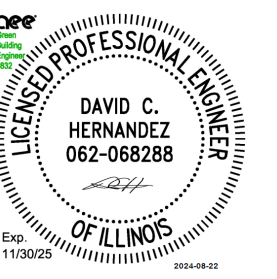
ROOF #	PITCH	ARRAY AZIMUTH	MODULE TILT	MODULE COUNT	MATERIAL	HEIGHT ABOVE GRADE
A1	2°	91°	FLUSH MOUNT	76	METAL	11'-0"
A2	2°	91°	FLUSH MOUNT	60	METAL	11'-0"
A3	2°	91°	FLUSH MOUNT	32	METAL	11'-0"
A4	2°	91°	FLUSH MOUNT	36	METAL	11'-0"
A5	2°	91°	FLUSH MOUNT	36	METAL	11'-0"
A6	2°	91°	FLUSH MOUNT	32	METAL	11'-0"
A7	2°	91°	FLUSH MOUNT	16	METAL	11'-0"
A8	2°	91°	FLUSH MOUNT	16	METAL	11'-0"
A9	2°	91°	FLUSH MOUNT	28	METAL	11'-0"
B1	2°	270°	FLUSH MOUNT	140	METAL	11'-0"
B2	2°	270°	FLUSH MOUNT	56	METAL	11'-0"
B3	2°	270°	FLUSH MOUNT	36	METAL	11'-0"
B4	2°	270°	FLUSH MOUNT	36	METAL	11'-0"
B5	2°	270°	FLUSH MOUNT	28	METAL	11'-0"
B6	2°	270°	FLUSH MOUNT	36	METAL	11'-0"
B7	2°	270°	FLUSH MOUNT	16	METAL	11'-0"
B8	2°	270°	FLUSH MOUNT	16	METAL	11'-0"
B9	2°	270°	FLUSH MOUNT	28	METAL	11'-0"
C1	1°	270°	FLUSH MOUNT	28	METAL	11'-0"
C2	1°	270°	FLUSH MOUNT	28	METAL	11'-0"

ROOF DETAILS

ROOF #	PITCH	ARRAY AZIMUTH	MODULE TILT	MODULE COUNT	MATERIAL	HEIGHT ABOVE GRADE
C3	1°	270°	FLUSH MOUNT	28	METAL	11'-0"
C4	1°	270°	FLUSH MOUNT	28	METAL	11'-0"
C5	1°	270°	FLUSH MOUNT	28	METAL	11'-0"
C6	1°	270°	FLUSH MOUNT	60	METAL	11'-0"
C7	1°	270°	FLUSH MOUNT	28	METAL	11'-0"
C8	1°	270°	FLUSH MOUNT	20	METAL	11'-0"
C9	1°	270°	FLUSH MOUNT	28	METAL	11'-0"
C10	1°	270°	FLUSH MOUNT	28	METAL	11'-0"
C11	1°	270°	FLUSH MOUNT	28	METAL	11'-0"
C12	1°	270°	FLUSH MOUNT	13	METAL	11'-0"
C13	1°	-	-	-	METAL	11'-0"
C14	1°	-	-	-	METAL	11'-0"
C15	1°	-	-	-	METAL	11'-0"
D1	1°	91°	FLUSH MOUNT	18	METAL	11'-0"
D2	1°	91°	FLUSH MOUNT	21	METAL	11'-0"
D3	1°	91°	FLUSH MOUNT	21	METAL	11'-0"
D4	1°	91°	FLUSH MOUNT	21	METAL	11'-0"
D5	1°	91°	FLUSH MOUNT	21	METAL	11'-0"
D6	1°	91°	FLUSH MOUNT	45	METAL	11'-0"
D7	1°	91°	FLUSH MOUNT	21	METAL	11'-0"
D8	1°	91°	FLUSH MOUNT	21	METAL	11'-0"
D9	1°	91°	FLUSH MOUNT	15	METAL	11'-0"
D10	1°	91°	FLUSH MOUNT	21	METAL	11'-0"
D11	1°	91°	FLUSH MOUNT	21	METAL	11'-0"
D12	1°	91°	FLUSH MOUNT	21	METAL	11'-0"
D13	1°	-	-	-	METAL	11'-0"
D14	1°	-	-	-	METAL	11'-0"
D15	1°	-	-	-	METAL	11'-0"



ELECTRICAL CERTIFICATION



PUBLIC STORAGE #08224 -130
 HILLCREST
 130 HILLCREST BLVD
 SCHAUMBURG, IL 60195

DRAWN BY
 WD

CHECKED BY
 PB

DATE
 22-Aug-2024

DRAWING LEVEL
 ISSUED FOR PERMIT

REV.	DATE
A	
B	
C	
D	
E	

SHEET SIZE	36X24 SHOULD MEASURE 1":
SCALE	1:300

SHEET TITLE
G22
 ARRAY DIMENSIONS

NOTES:

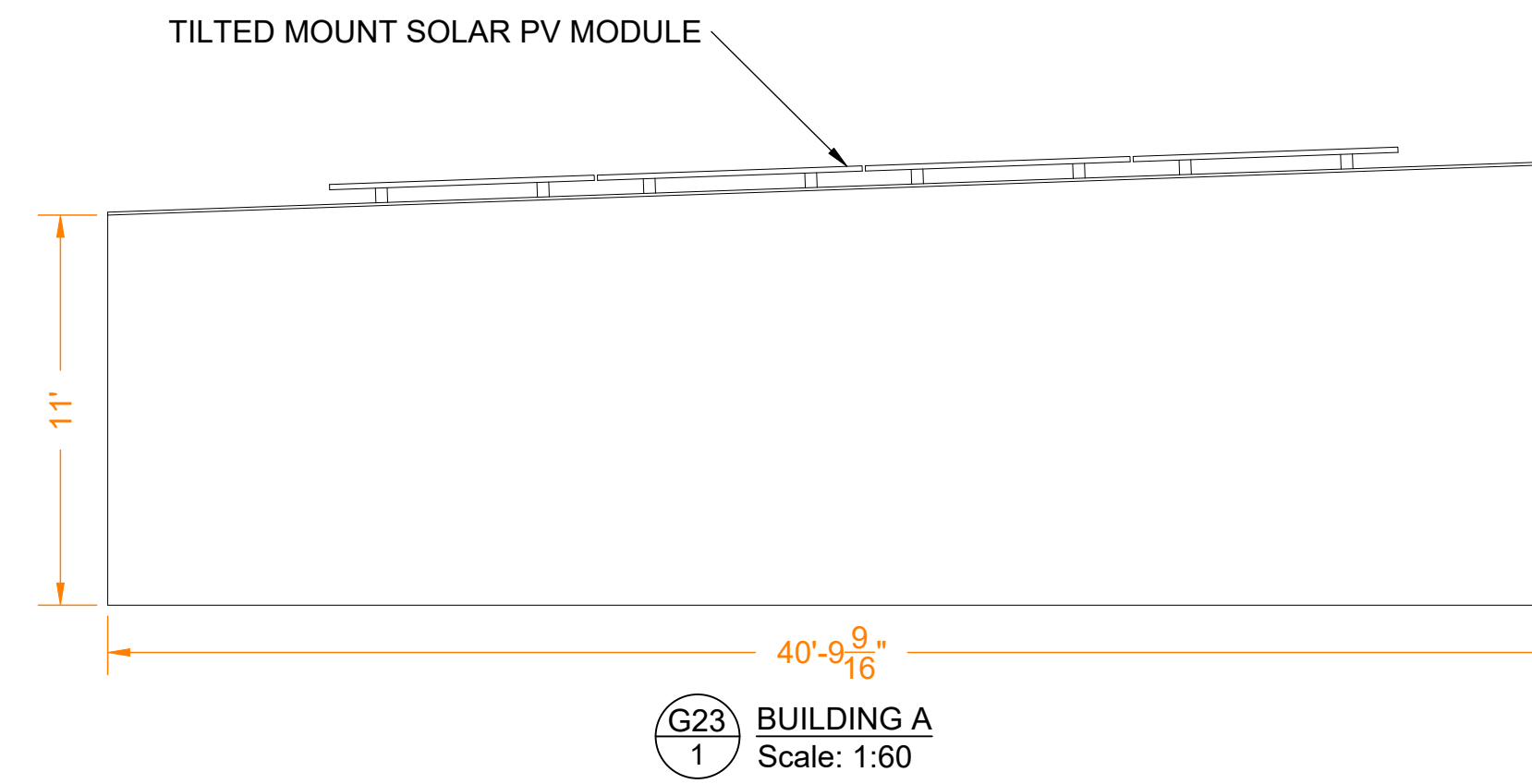
- ALL DIMENSIONS TO BE FIELD VERIFIED. LOCATIONS SHOWN ARE APPROXIMATE.
- ALL PV ELECTRICAL EQUIPMENT TO BE INSTALLED AS PER INSTALLATION MANUALS AND NEC REQUIREMENTS.
- CARE SHALL BE TAKEN TO ENSURE CONDUITS AND RACEWAYS ARE ORIENTED TO MINIMIZE INTERFERENCE WITH FIRE ACCESS WALKWAYS.
- EXACT LOCATION AND SPACING OF PHOTOVOLTAIC MODULES TO BE ESTABLISHED ACCORDING TO THE FINAL CONFIGURATION DETERMINED BY INSTALLER AND RACKING MANUFACTURER
- PROPERTY LINE DETERMINED FROM PUBLICLY AVAILABLE GIS DATA.
- THIS DRAWING PROVIDES AN OVERVIEW ONLY AND AS SUCH SHOULD NOT BE RELIED ON FOR EXACT DIMENSIONS.
- MODULE LAYOUT IS SUBJECT TO CHANGE BASED ON AVAILABLE STRUCTURAL CAPACITY AND POWER GRID AVAILABILITY.
- ROOF AND MODULE LAYOUTS ARE BASED ON INFORMATION COLLECTED DURING THE SITE SURVEY. ROOF ALTERATIONS MADE AFTER THE SURVEY DATE WILL NOT BE REFLECTED IN THIS DRAWING.
- TREES DO NOT SHADE ANY ROOF UNLESS TREE HEIGHT IS SPECIFIED.
- ALL DIMENSIONS REPRESENT THREE-DIMENSIONAL PATH PROJECTIONS OF WHICH THE ROOF'S PITCH CAN INFLUENCE THE ACCURACY OF THE MEASUREMENTS.

ROOF DETAILS						
ROOF #	PITCH	ARRAY AZIMUTH	MODULE TILT	MODULE COUNT	MATERIAL	HEIGHT ABOVE GRADE
C3	1°	270°	FLUSH MOUNT	28	METAL	11'-0"
C4	1°	270°	FLUSH MOUNT	28	METAL	11'-0"
C5	1°	270°	FLUSH MOUNT	28	METAL	11'-0"
C6	1°	270°	FLUSH MOUNT	60	METAL	11'-0"
C7	1°	270°	FLUSH MOUNT	28	METAL	11'-0"
C8	1°	270°	FLUSH MOUNT	20	METAL	11'-0"
C9	1°	270°	FLUSH MOUNT	28	METAL	11'-0"
C10	1°	270°	FLUSH MOUNT	28	METAL	11'-0"
C11	1°	270°	FLUSH MOUNT	28	METAL	11'-0"
C12	1°	270°	FLUSH MOUNT	13	METAL	11'-0"
C13	1°	-	-	-	METAL	11'-0"
C14	1°	-	-	-	METAL	11'-0"
C15	1°	-	-	-	METAL	11'-0"
D1	1°	91°	FLUSH MOUNT	18	METAL	11'-0"
D2	1°	91°	FLUSH MOUNT	21	METAL	11'-0"
D3	1°	91°	FLUSH MOUNT	21	METAL	11'-0"
D4	1°	91°	FLUSH MOUNT	21	METAL	11'-0"
D5	1°	91°	FLUSH MOUNT	21	METAL	11'-0"
D6	1°	91°	FLUSH MOUNT	45	METAL	11'-0"
D7	1°	91°	FLUSH MOUNT	21	METAL	11'-0"
D8	1°	91°	FLUSH MOUNT	21	METAL	11'-0"
D9	1°	91°	FLUSH MOUNT	15	METAL	11'-0"
D10	1°	91°	FLUSH MOUNT	21	METAL	11'-0"
D11	1°	91°	FLUSH MOUNT	21	METAL	11'-0"
D12	1°	91°	FLUSH MOUNT	21	METAL	11'-0"
D13	1°	-	-	-	METAL	11'-0"
D14	1°	-	-	-	METAL	11'-0"
D15	1°	-	-	-	METAL	11'-0"

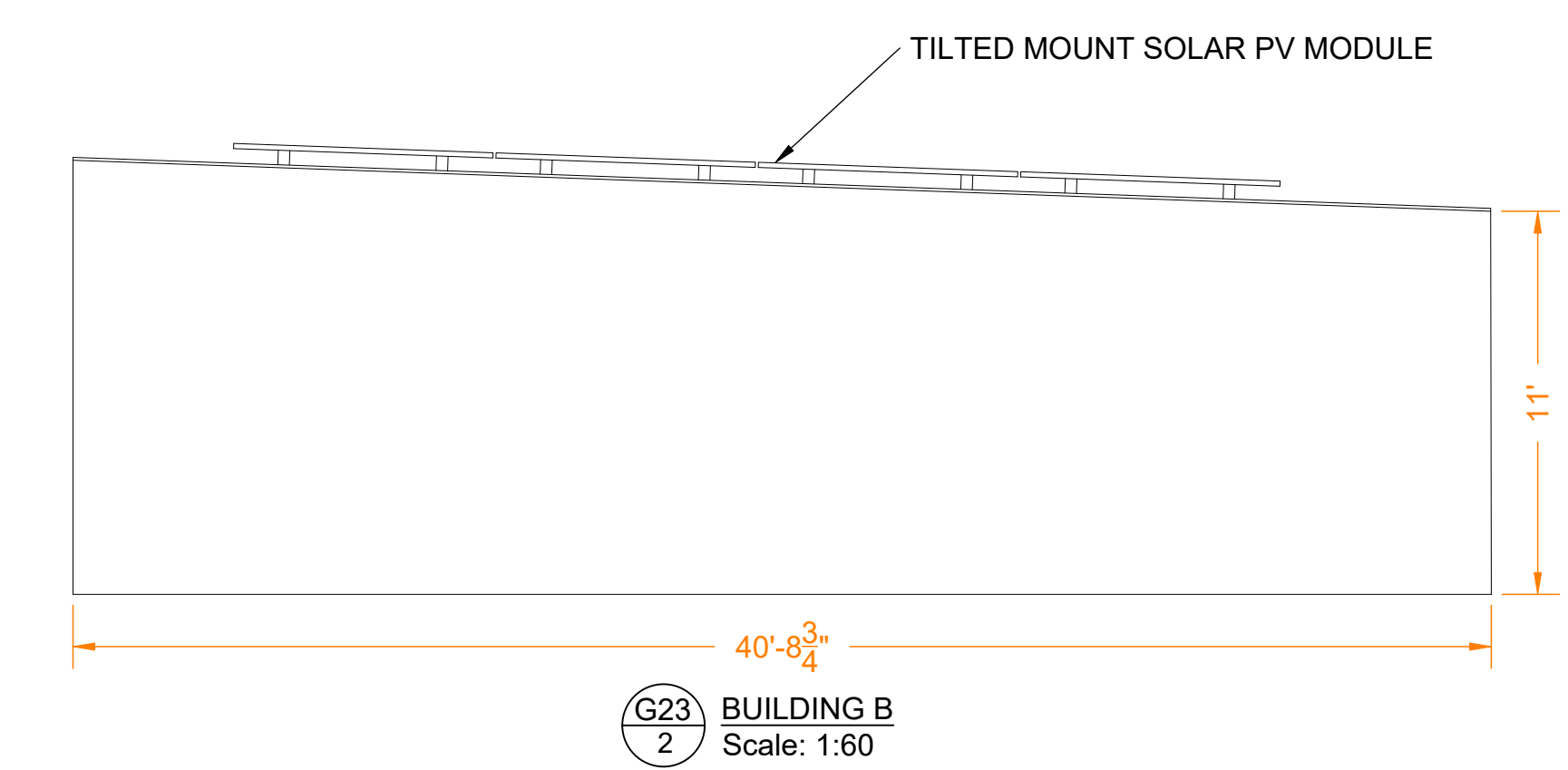
LEGEND			
	DRAIN		ACCESS
	VENT		ELECTRICAL
	GAS		ROOF SEAM
	RTU		SATELLITE
	BOX		SKYLIGHT
	SHADOW		SUPPORT
	TREE		UNSURVEYED
	RIDGE		FIRE ACCESS PATH
	STRUCTURAL KEEPOUT		

PROJECT DETAILS	
SYSTEM SIZE	774.88 KW DC
NUMBER OF MODULES	1336
MODULE MODEL	JINKO SOLAR-EAGLE 72 G6B JKM580N-72HL4-BDV-580W
MODULE SIZE	89.69" X 44.65"
SITE SURVEY DATE	-

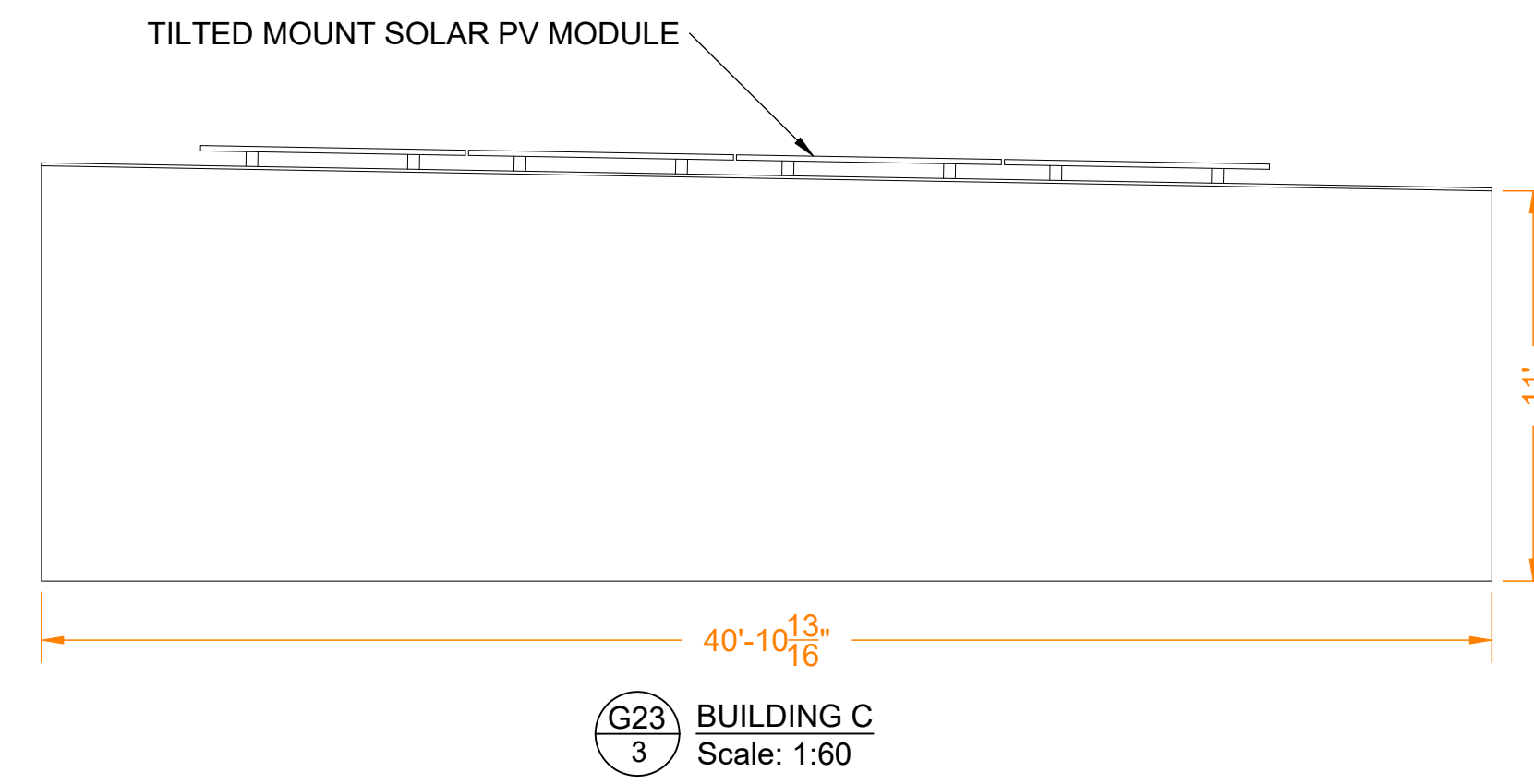
ROOF DETAILS						
ROOF #	PITCH	ARRAY AZIMUTH	MODULE TILT	MODULE COUNT	MATERIAL	HEIGHT ABOVE GRADE
A1	2°	91°	FLUSH MOUNT	76	METAL	11'-0"
A2	2°	91°	FLUSH MOUNT	60	METAL	11'-0"
A3	2°	91°	FLUSH MOUNT	32	METAL	11'-0"
A4	2°	91°	FLUSH MOUNT	36	METAL	11'-0"
A5	2°	91°	FLUSH MOUNT	36	METAL	11'-0"
A6	2°	91°	FLUSH MOUNT	32	METAL	11'-0"
A7	2°	91°	FLUSH MOUNT	16	METAL	11'-0"
A8	2°	91°	FLUSH MOUNT	16	METAL	11'-0"
A9	2°	91°	FLUSH MOUNT	28	METAL	11'-0"
B1	2°	270°	FLUSH MOUNT	140	METAL	11'-0"
B2	2°	270°	FLUSH MOUNT	56	METAL	11'-0"
B3	2°	270°	FLUSH MOUNT	36	METAL	11'-0"
B4	2°	270°	FLUSH MOUNT	36	METAL	11'-0"
B5	2°	270°	FLUSH MOUNT	28	METAL	11'-0"
B6	2°	270°	FLUSH MOUNT	36	METAL	11'-0"
B7	2°	270°	FLUSH MOUNT	16	METAL	11'-0"
B8	2°	270°	FLUSH MOUNT	16	METAL	11'-0"
B9	2°	270°	FLUSH MOUNT	28	METAL	11'-0"
C1	1°	270°	FLUSH MOUNT	28	METAL	11'-0"
C2	1°	270°	FLUSH MOUNT	28	METAL	11'-0"



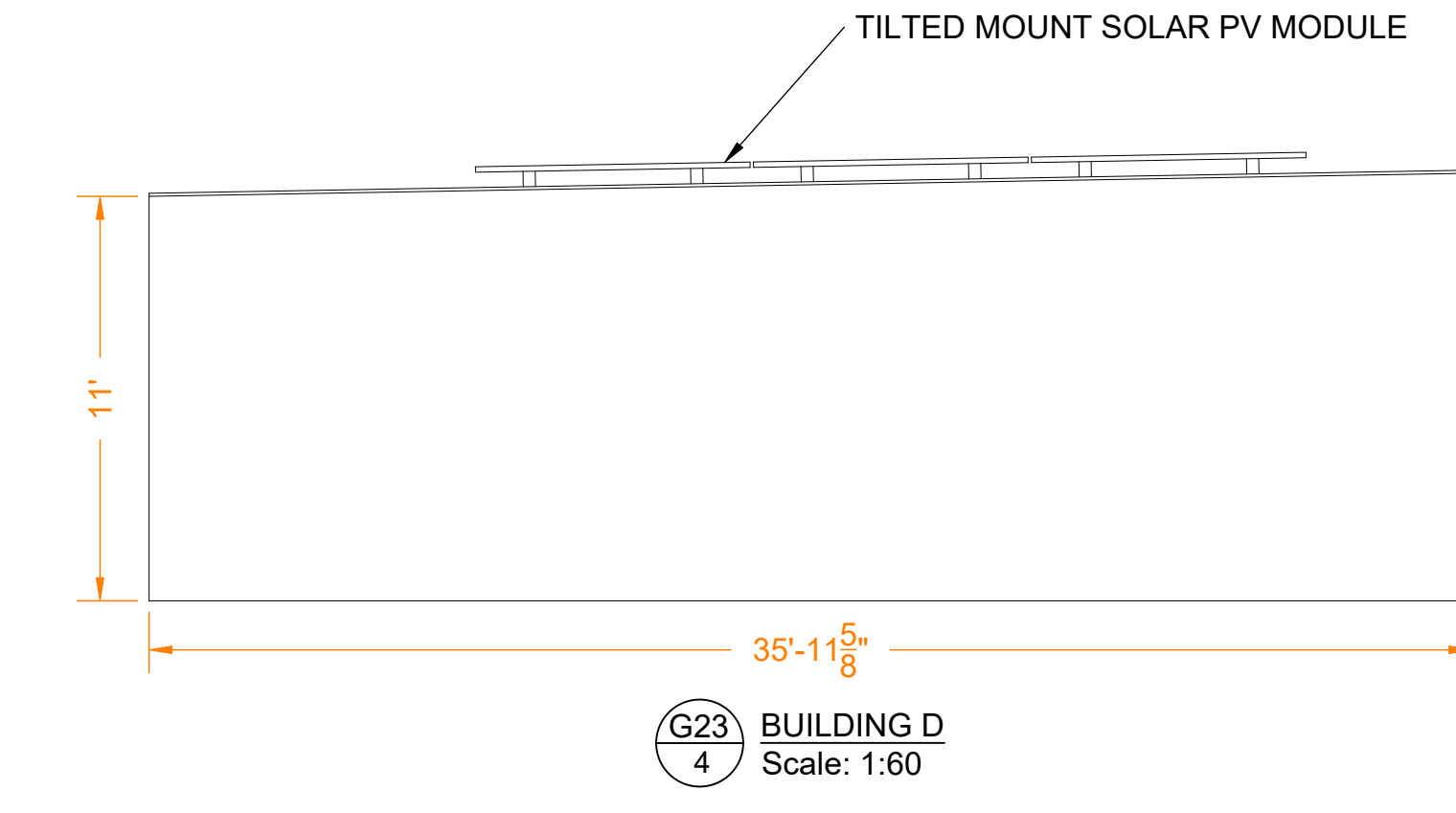
G23 1 BUILDING A Scale: 1:60



G23 2 BUILDING B Scale: 1:60



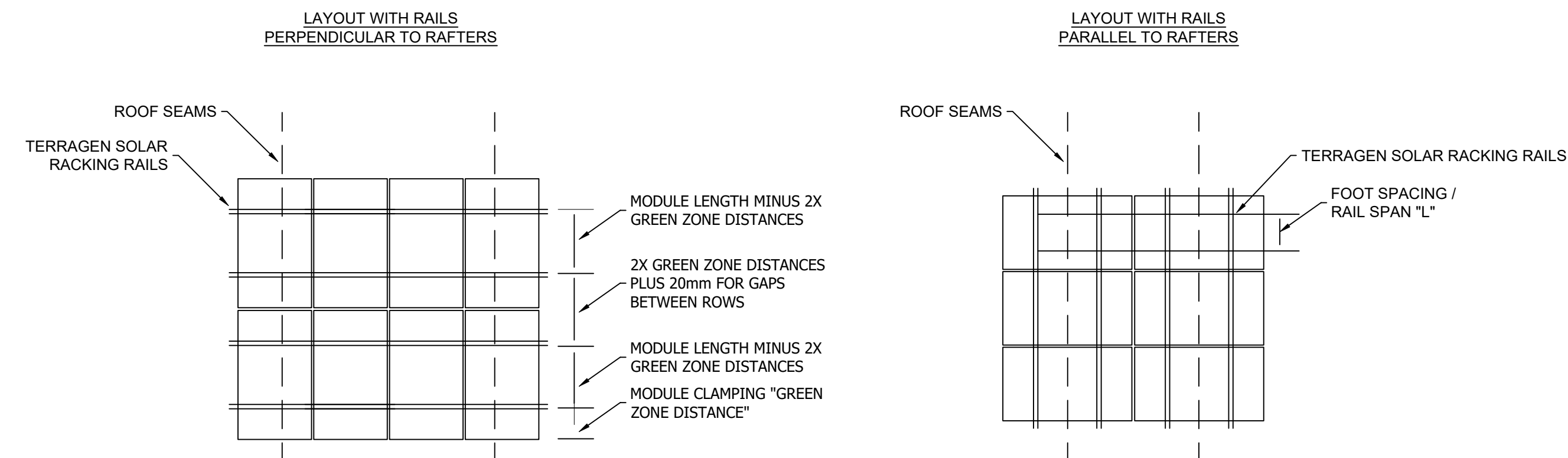
G23 3 BUILDING C Scale: 1:60



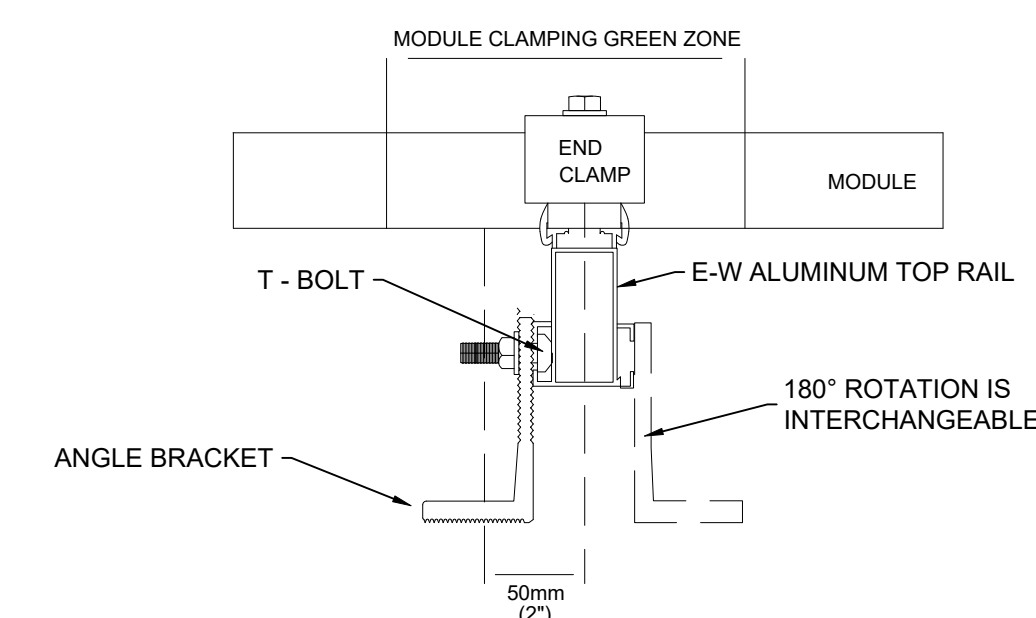
G23 4 BUILDING D Scale: 1:60

NOTES:

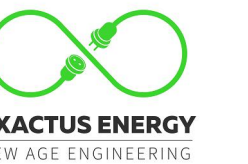
- MODULES SHOULD BE POSITIONED SO THAT RAILS ARE FLUSH WITH EDGE OF MODULE OR EXTENDING NO MORE THAN 1/2" BEYOND EDGE OF MODULE. THE MODULES SHOULD NOT EXTEND PAST (OVERHANG) THE ENDS OF RAILS.
- MODULE GAP IS .79" (E-W) AND 1" FOR ROW SPACING (N-S).
- THERE IS 4.75" MODULE TO MODULE GAP FOR EVERY 12 MODULES MAXIMUM FOR THERMAL EXPANSION.



G23 5 RACKING DETAILS - TERRAGEN RACKING SCALE: NTS



G23 6 RACKING DETAILS - TERRAGEN RACKING SCALE: NTS



ELECTRICAL CERTIFICATION



PUBLIC STORAGE #08224 -130
HILLCREST
130 HILLCREST BLVD
SCHAUMBURG, IL 60195

DRAWN BY
WD

CHECKED BY
PB

DATE
22-Aug-2024

DRAWING LEVEL
ISSUED FOR PERMIT

DRAWING LEVEL

DATE

REV.

A B C D E
SHEET SIZE
36X24 SHOULD MEASURE 1":

SCALE
1:60

SHEET TITLE

G23
BUILDING ELEVATIONS

NOTES:

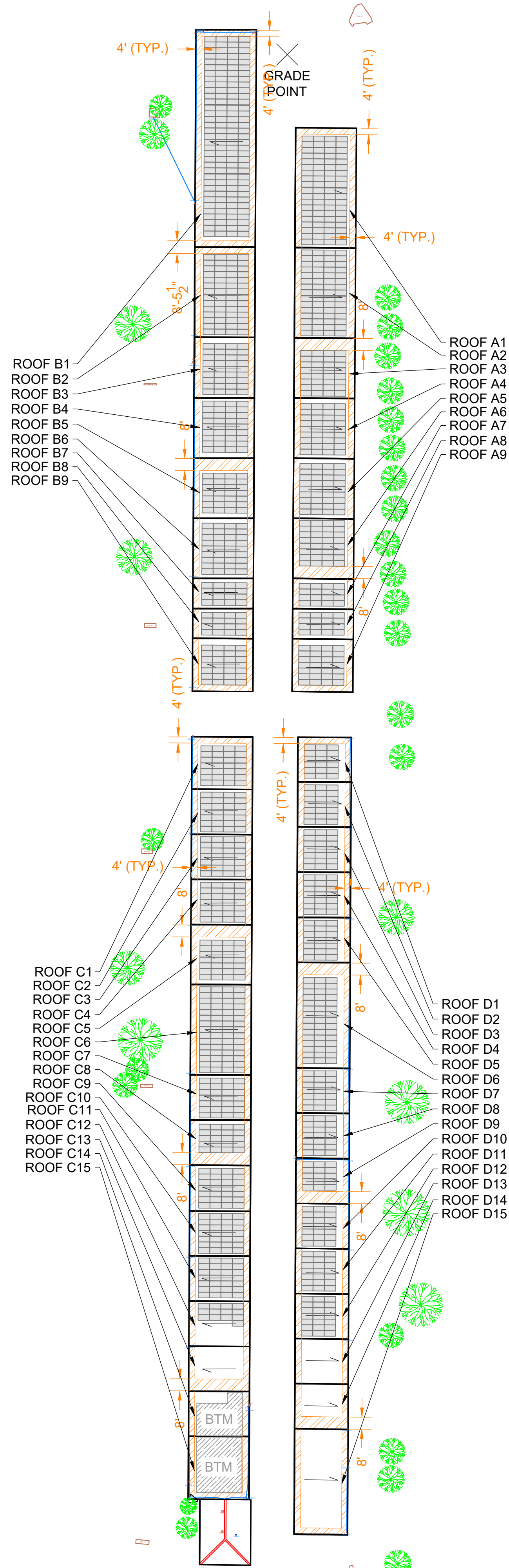
- ALL DIMENSIONS TO BE FIELD VERIFIED. LOCATIONS SHOWN ARE APPROXIMATE.
- ALL PV ELECTRICAL EQUIPMENT TO BE INSTALLED AS PER INSTALLATION MANUALS AND NEC REQUIREMENTS.
- CARE SHALL BE TAKEN TO ENSURE CONDUITS AND RACEWAYS ARE ORIENTED TO MINIMIZE INTERFERENCE WITH FIRE ACCESS WALKWAYS.
- EXACT LOCATION AND SPACING OF PHOTOVOLTAIC MODULES TO BE ESTABLISHED ACCORDING TO THE FINAL CONFIGURATION DETERMINED BY INSTALLER AND RACKING MANUFACTURER
- PROPERTY LINE DETERMINED FROM PUBLICLY AVAILABLE GIS DATA.
- THIS DRAWING PROVIDES AN OVERVIEW ONLY AND AS SUCH SHOULD NOT BE RELIED ON FOR EXACT DIMENSIONS.
- MODULE LAYOUT IS SUBJECT TO CHANGE BASED ON AVAILABLE STRUCTURAL CAPACITY AND POWER GRID AVAILABILITY.
- ROOF AND MODULE LAYOUTS ARE BASED ON INFORMATION COLLECTED DURING THE SITE SURVEY. ROOF ALTERATIONS MADE AFTER THE SURVEY DATE WILL NOT BE REFLECTED IN THIS DRAWING.
- TREES DO NOT SHADE ANY ROOF UNLESS TREE HEIGHT IS SPECIFIED.
- ALL DIMENSIONS REPRESENT THREE-DIMENSIONAL PATH PROJECTIONS OF WHICH THE ROOF'S PITCH CAN INFLUENCE THE ACCURACY OF THE MEASUREMENTS.

ROOF DETAILS						
ROOF #	PITCH	ARRAY AZIMUTH	MODULE TILT	MODULE COUNT	MATERIAL	HEIGHT ABOVE GRADE
C3	1°	270°	FLUSH MOUNT	28	METAL	11'-0"
C4	1°	270°	FLUSH MOUNT	28	METAL	11'-0"
C5	1°	270°	FLUSH MOUNT	28	METAL	11'-0"
C6	1°	270°	FLUSH MOUNT	60	METAL	11'-0"
C7	1°	270°	FLUSH MOUNT	28	METAL	11'-0"
C8	1°	270°	FLUSH MOUNT	20	METAL	11'-0"
C9	1°	270°	FLUSH MOUNT	28	METAL	11'-0"
C10	1°	270°	FLUSH MOUNT	28	METAL	11'-0"
C11	1°	270°	FLUSH MOUNT	28	METAL	11'-0"
C12	1°	270°	FLUSH MOUNT	13	METAL	11'-0"
C13	1°	-	-	-	METAL	11'-0"
C14	1°	-	-	-	METAL	11'-0"
C15	1°	-	-	-	METAL	11'-0"
D1	1°	91°	FLUSH MOUNT	18	METAL	11'-0"
D2	1°	91°	FLUSH MOUNT	21	METAL	11'-0"
D3	1°	91°	FLUSH MOUNT	21	METAL	11'-0"
D4	1°	91°	FLUSH MOUNT	21	METAL	11'-0"
D5	1°	91°	FLUSH MOUNT	21	METAL	11'-0"
D6	1°	91°	FLUSH MOUNT	45	METAL	11'-0"
D7	1°	91°	FLUSH MOUNT	21	METAL	11'-0"
D8	1°	91°	FLUSH MOUNT	21	METAL	11'-0"
D9	1°	91°	FLUSH MOUNT	15	METAL	11'-0"
D10	1°	91°	FLUSH MOUNT	21	METAL	11'-0"
D11	1°	91°	FLUSH MOUNT	21	METAL	11'-0"
D12	1°	91°	FLUSH MOUNT	21	METAL	11'-0"
D13	1°	-	-	-	METAL	11'-0"
D14	1°	-	-	-	METAL	11'-0"
D15	1°	-	-	-	METAL	11'-0"

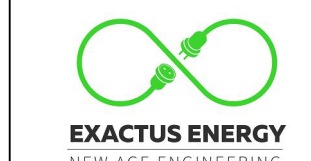
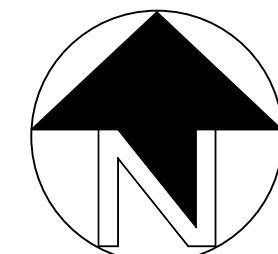
LEGEND	
	DRAIN
	VENT
	GAS
	RTU
	BOX
	SHADOW
	TREE
	RIDGE
	STRUCTURAL KEEPOUT
	ACCESS
	ELECTRICAL
	ROOF SEAM
	SATELLITE
	SKYLIGHT
	SUPPORT
	UNSURVEYED
	FIRE ACCESS PATH

PROJECT DETAILS	
SYSTEM SIZE	774.88 KW DC
NUMBER OF MODULES	1336
MODULE MODEL	JINKO SOLAR-EAGLE 72 G6B JKM580N-72HL4-BDV-580W
MODULE SIZE	89.69" X 44.65"
SITE SURVEY DATE	-

ROOF DETAILS						
ROOF #	PITCH	ARRAY AZIMUTH	MODULE TILT	MODULE COUNT	MATERIAL	HEIGHT ABOVE GRADE
A1	2°	91°	FLUSH MOUNT	76	METAL	11'-0"
A2	2°	91°	FLUSH MOUNT	60	METAL	11'-0"
A3	2°	91°	FLUSH MOUNT	32	METAL	11'-0"
A4	2°	91°	FLUSH MOUNT	36	METAL	11'-0"
A5	2°	91°	FLUSH MOUNT	36	METAL	11'-0"
A6	2°	91°	FLUSH MOUNT	32	METAL	11'-0"
A7	2°	91°	FLUSH MOUNT	16	METAL	11'-0"
A8	2°	91°	FLUSH MOUNT	16	METAL	11'-0"
A9	2°	91°	FLUSH MOUNT	28	METAL	11'-0"
B1	2°	270°	FLUSH MOUNT	140	METAL	11'-0"
B2	2°	270°	FLUSH MOUNT	56	METAL	11'-0"
B3	2°	270°	FLUSH MOUNT	36	METAL	11'-0"
B4	2°	270°	FLUSH MOUNT	36	METAL	11'-0"
B5	2°	270°	FLUSH MOUNT	28	METAL	11'-0"
B6	2°	270°	FLUSH MOUNT	36	METAL	11'-0"
B7	2°	270°	FLUSH MOUNT	16	METAL	11'-0"
B8	2°	270°	FLUSH MOUNT	16	METAL	11'-0"
B9	2°	270°	FLUSH MOUNT	28	METAL	11'-0"
C1	1°	270°	FLUSH MOUNT	28	METAL	11'-0"
C2	1°	270°	FLUSH MOUNT	28	METAL	11'-0"



SUMMARY OF CODES APPLIED	
CODE	DESCRIPTION
IFC 2021 SECTION 1205.3.1 EXCEPTION	WHERE EITHER AXIS OF THE BUILDING IS 250 FEET OR LESS, THE CLEAR PERIMETER AROUND THE EDGES OF THE ROOF SHALL BE PERMITTED TO BE REDUCED TO A MINIMUM WIDTH OF 4 FEET.
IFC 2021 SECTION 1205.3.2	PATHWAYS SHALL BE PROVIDED AT INTERVALS NOT GREATER THAN 150 FEET THROUGHOUT THE LENGTH AND WIDTH OF THE ROOF.
IFC 2021 SECTION 1205.3.3	8' SMOKE VENTILATION PATHWAYS ARE PROVIDED BETWEEN ARRAY SECTIONS.



ELECTRICAL CERTIFICATION



PUBLIC STORAGE #08224 -130
 HILLCREST
 130 HILLCREST BLVD
 SCHAUMBURG, IL 60195

DRAWN BY
WD

CHECKED BY
PB

DATE
22-Aug-2024

DRAWING LEVEL
ISSUED FOR PERMIT

DRAWING LEVEL	DATE	REV.	A	B	C	D	E
		A					
		B					
		C					
		D					
		E					

SHEET SIZE
36X24 SHOULD MEASURE 1":

SCALE
1:600

SHEET TITLE
G30
FIRE ACCESS PLAN